

bColor-Changer 7.0

The Server Version

Baan ERP

Table of Contents:

Installing bColor-Changer – UNIX	2
Installing bColor-Changer – Windows 3	
Upgrade to Baan Hot Link 7.0	4
Installing bColor-Changer – Baan Tools	5
Adding the company to the window title	7
bcc.ini	8
Define Local Temp Directory	9
Defining Company Color & Style	10
Defining Session's Color & Style	12
Maintain BC User's Session's Timeout	13
Adding bColor-Changer at Startup for all users	14
Adding bColor-Changer at Startup for individual users	15
Excluding Users	17
General Information	18

Important: Please read last page before you proceed with installation.



Installing *bColor-Changer* – UNIX

*If your Baan System is installed on a Windows machine, please proceed to page 3.
Otherwise, follow the instructions below.*

- 1) Transfer the file bhc70p5a.tar to your UNIX machine (using FTP in binary mode).
- 2) Log into your UNIX machine using telnet as the user bsp and change your directory to the one where the file bhc70p5a.tar is located. Variable **\$BSE** should be defined for this login.
- 3) Extract the file bhc70p5a.tar (**tar xvf bhc70p5a.tar**). Upon completion of the extract, a directory named bhc7.0d will be created.
- 4) Create a directory under \$BSE for installing BCC6 (**mkdir \$BSE/BHC7**)
- 5) Copy all files and directories under bhc7.0d to the new directory created (**cp -R bhc7.0d/* \$BSE/BHC7**)
- 6) Copy the Demo Activation Key or the Product License Key to the \$BSE/BHC7 directory. If you are upgrading from an older version, copy your old key to \$BSE/BHC7 and rename it to bcc70p5a.ckl
- 7) Change the permissions of \$BSE/BHC7 to 777 to enable reading, writing, and access for this directory.
(**chmod 777 \$BSE/BHC7**)

Proceed to page 4.

Installing *bColor-Changer* – Windows

- 1) Unzip the file `bhc70p5a.tar`. Upon completion of the extract, a folder named `bhc7.0d` will be created.
- 2) Create a directory with the name **BHC7** under **#{BSE}**.
- 3) Copy all contents of `bhc7.0d` (including subdirectories) to **#{BSE}/BHC7** folder.
- 4) Copy the *Demo Activation Key* or the *Product License Key* to the **#{BSE}/BHC7** directory. If you are upgrading from an older version, copy your old key to `#{BSE}/BHC7` and rename it to `bcc70p5a.ckl`



Upgrading to *bColor-Changer 7.0*

NAZDAQ has done few changes to the \$BSE/BHC7/settings directory. Now it is divided to sub folders so that it will be better organized.

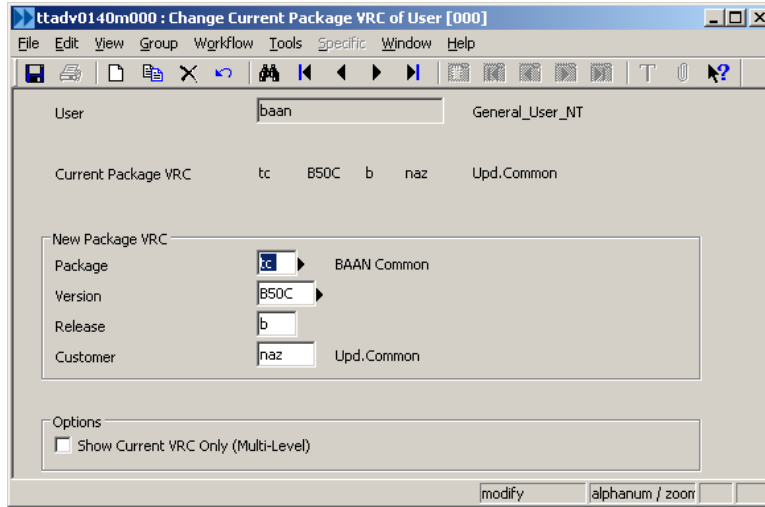
In order to upgrade to 7.0 version you need to copy all the files from \$BSE/BHC7/settings (or older) manually to the right subfolder. Below is a table that explains where to put each file:

Sub Folder Name	File Name
adm	bcc.ini
	system.ini
col	companies.dat
	comp_<company>.cfg
scl	bcsessions.dat
	<session code><company>.cfg

Installing *bColor-Changer* – Baan Tools

BCC includes two Baan sessions – follow the below steps to install them on your Baan server:

- 1) Log into Baan (as user **baan** or user **bsp**) and change package **VRC** of user using **ttadv0140m000**:



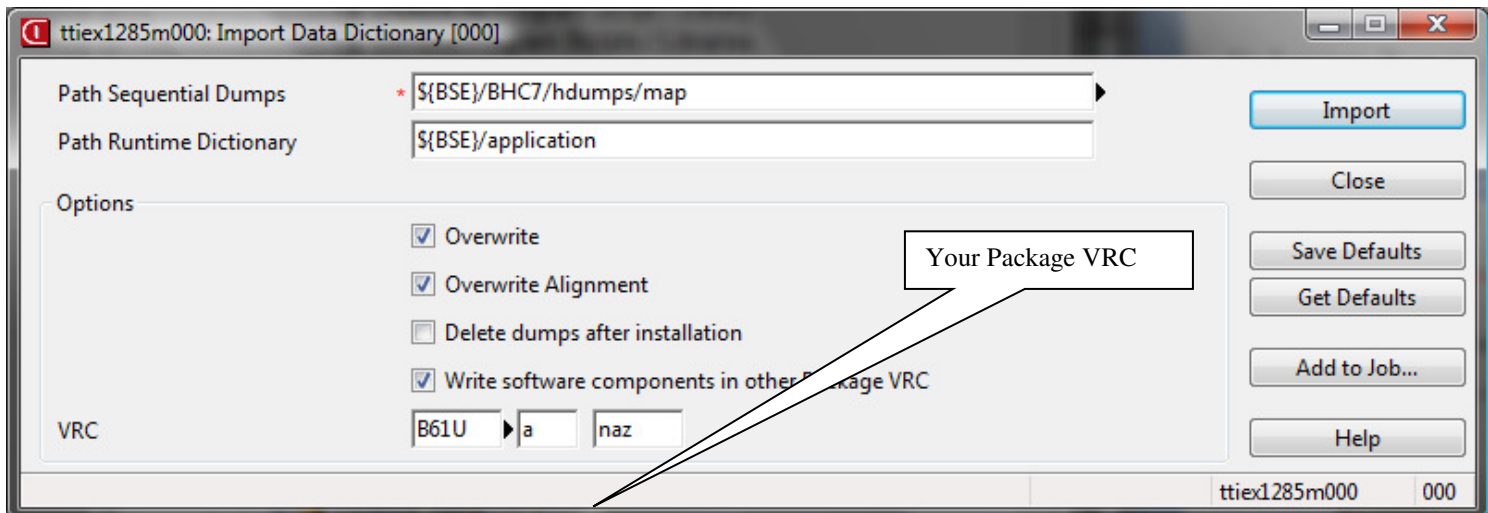
- 2) Run “Import Data Dictionary” – **ttiex1285m000** for the following under **dumps**:

bsa sestim tmp

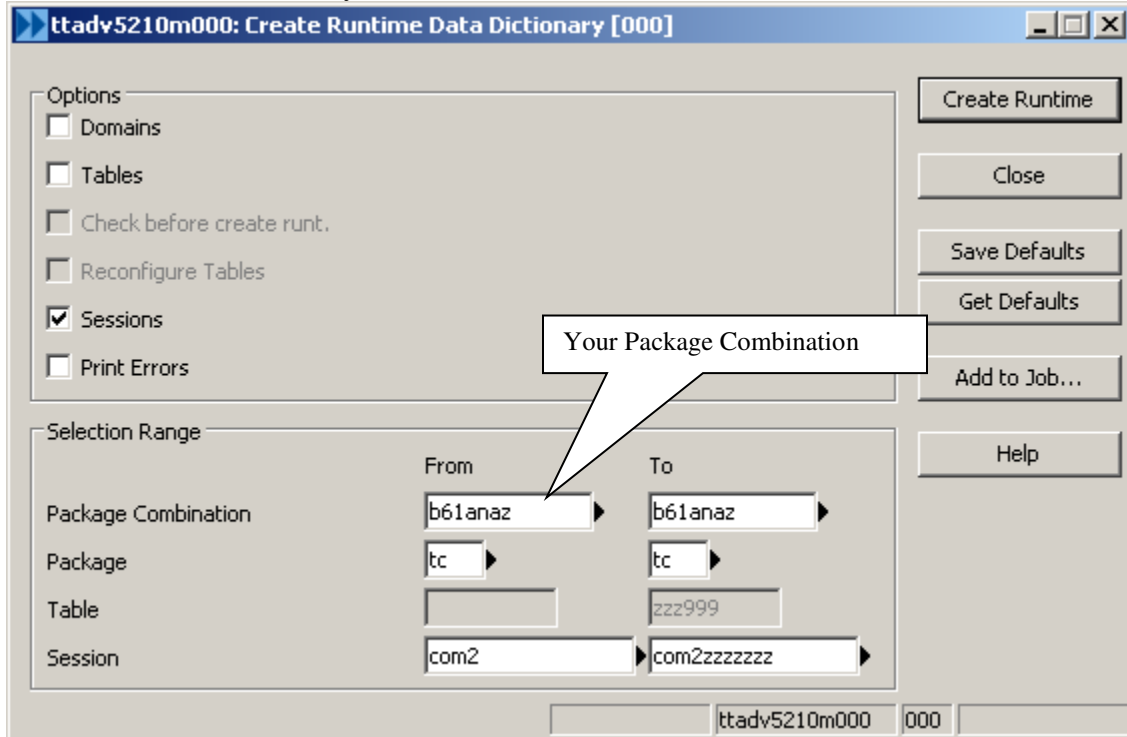
under **cdumps**:

col ses mnu

Here is an example how to import **tmp**



3) Create “Runtime Data Dictionary” **ttadv5210m000** from session **tcom2** to **tcom2zzzzzzzz**.



ttadv5210m000: Create Runtime Data Dictionary [000]

Options

- Domains
- Tables
- Check before create runt.
- Reconfigure Tables
- Sessions
- Print Errors

Selection Range

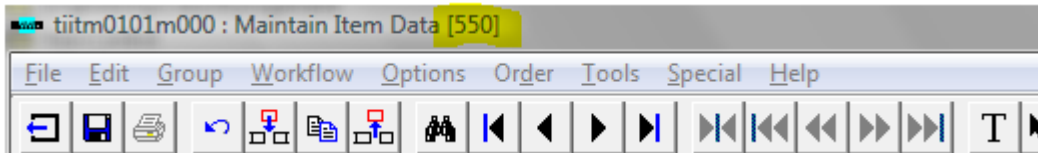
	From	To
Package Combination	b61anaz	b61anaz
Package	tc	tc
Table		zzz999
Session	com2	com2zzzzzzzz

Buttons: Create Runtime, Close, Save Defaults, Get Defaults, Add to Job..., Help

ttadv5210m000 000

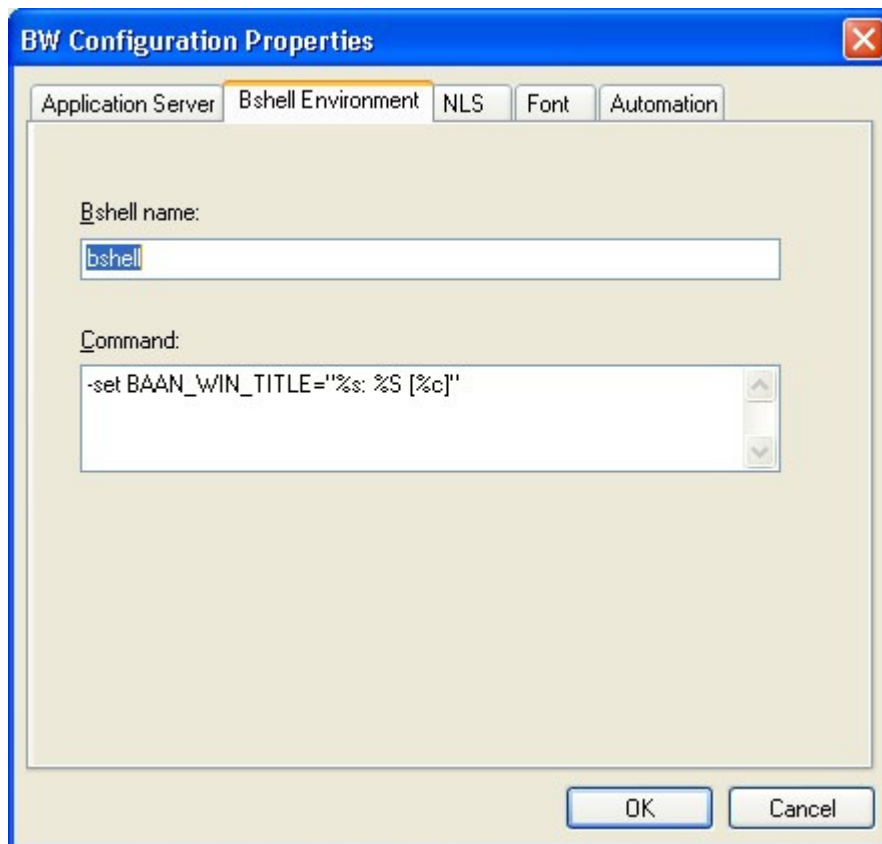
Adding the company to the window title

You have to make sure that the company number appears between brackets in any baan session:



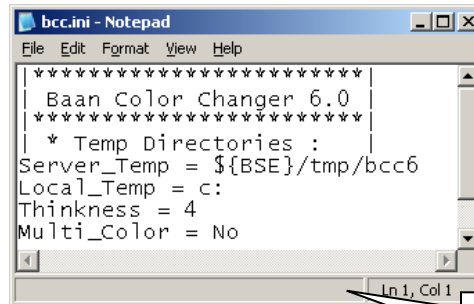
To do so you have set the following command in the BW configuration:

```
-set BAAN_WIN_TITLE="%s: %S [%c]"
```



Bcc.ini

The bcc.ini saved in \$BSE/BHC7/settings/adm contains **default** parameters for better configuring of the bColor-Changer product.



```

*****
| Baan Color Changer 6.0 |
*****
| * Temp Directories : |
Server_Temp = ${BSE}/tmp/bcc6
Local_Temp = c:
Thickness = 4
Multi_Color = No
  
```

-The file can be edited using notepad or vi.

Server_Temp

bColor-Changer uses \$BSE/tmp as its default location for creating temporary files. This directory can be changed by changing this variable.

Local_Temp

bColor-Changer copies files to the user’s C: drive and create directories by the name bcc<user name> (For example, bccgeorge for user george). If the PC you are using does not have access to the C Drive (Like in case you are using Meta-Frame or Citrix), or if you wish to locate your temp files in a different location, change this variable.

Thickness

This variable set the thickness of the bColor-Changer bar

Multi_Color

Available values are:

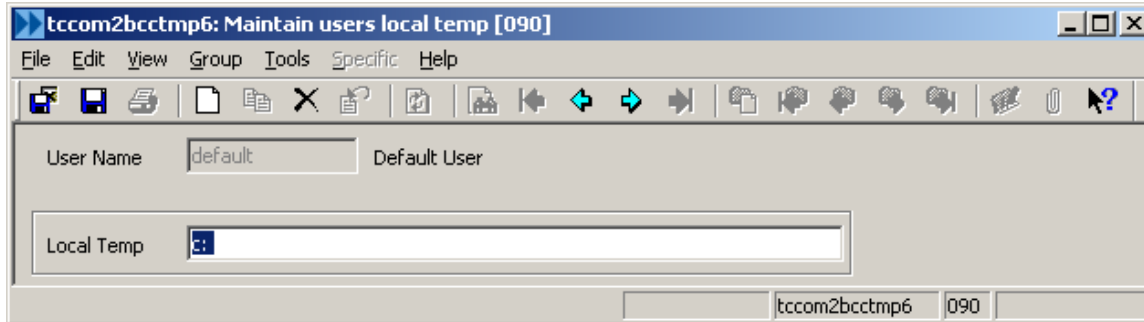
Yes: both the session & company color will be display. The session color will overwrite the company color

No: For the sessions that have colors define it will display only the session’s color without the company’s color.

Time_Out

bColor-Changer has the ability to log the user out after a predefined period of time, in which the user did not work on Baan or there was no active process running in it. This period of time can be defined for the whole company, or a specific user, in the “Maintain BC User's Session's Timeout” session (tcom2sestim7). In order to activate BC session timeout feature you need to set the variable to “Yes”

Define Local Temp Directory – tccom2bhctmp7



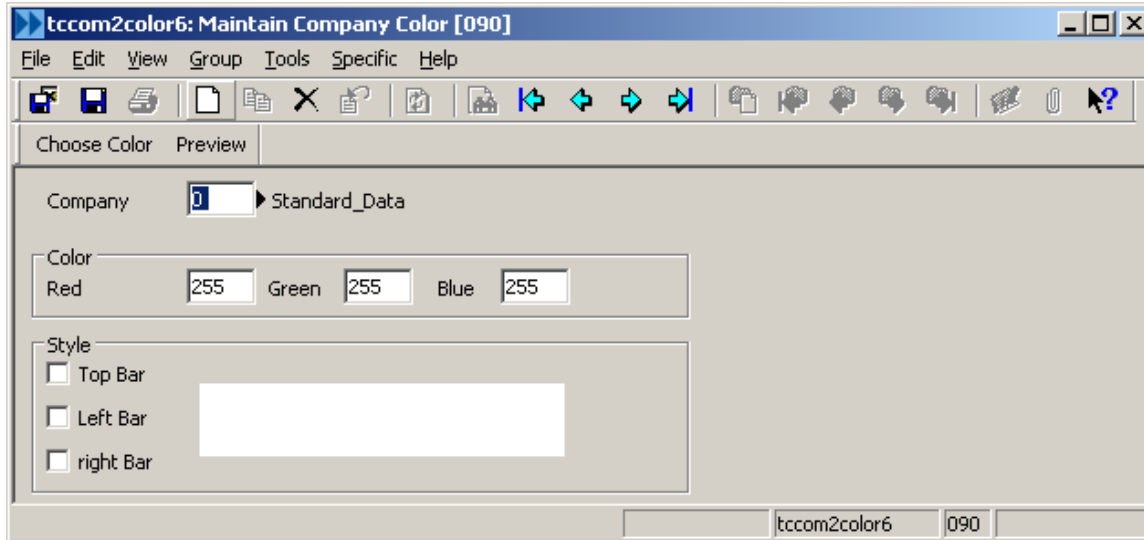
bColor-Changer local temp directory is created based on session **tccom2bhctmp7**

The default is C: (defined in **bcc.ini**), and if you have users for which C: is not good (Citrix for example), use **tccom2bhctmp7** and define a specific location for *bColor-Changer* Local Directory for each one of them.

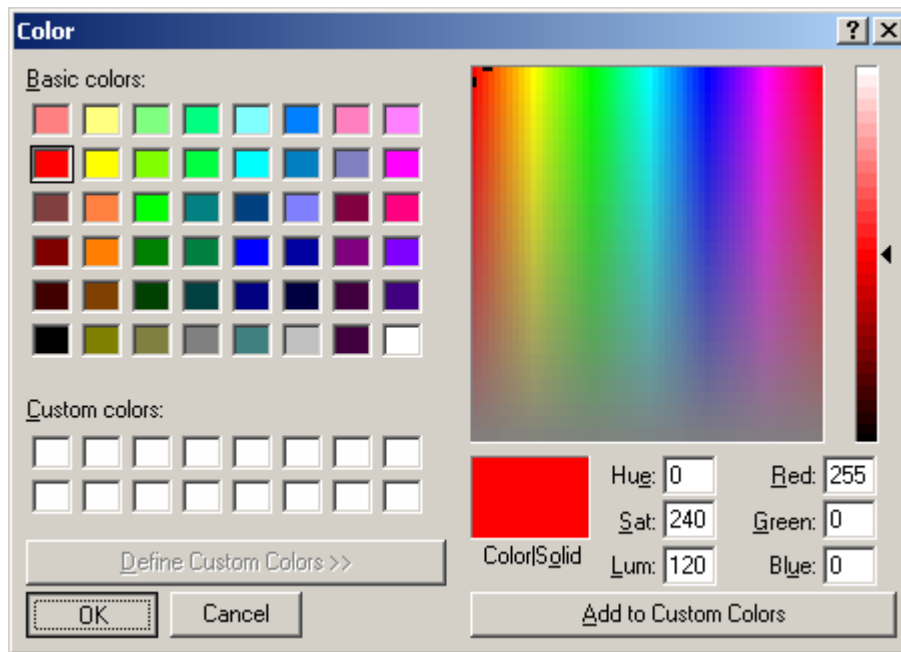
If most of your users use Citrix, change the default value in **bcc.ini** to be the directory on the meta-server where you wish to have *bColor-Changer* Local Directories created. For others, you must define them one-by-one.

Defining Company's Color & Style

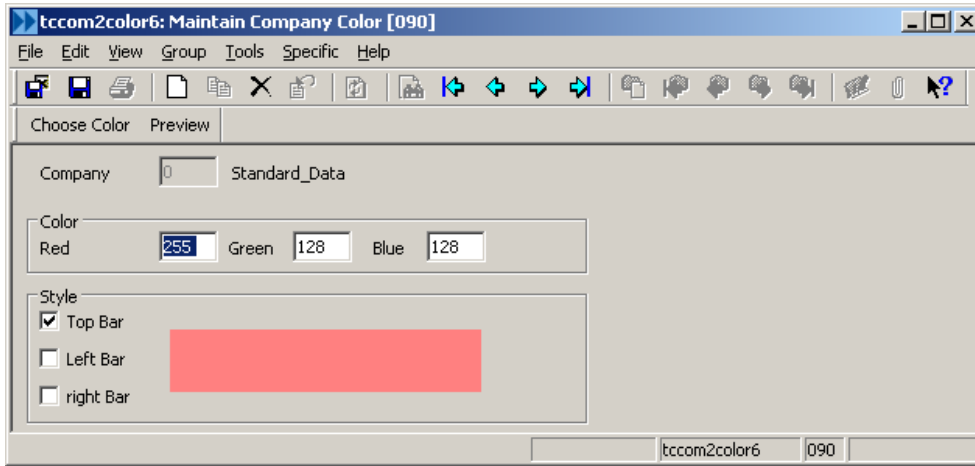
bColor-Changer is used for cases where you need to differentiate between companies based on company number. You can define a color for every company using **tccom2color7** session.



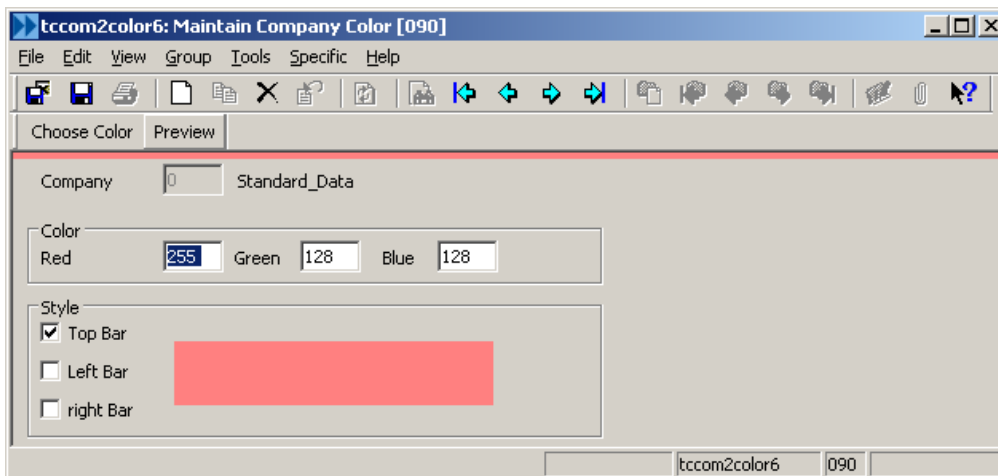
First you have to **insert** a company then click on “Choose Color”



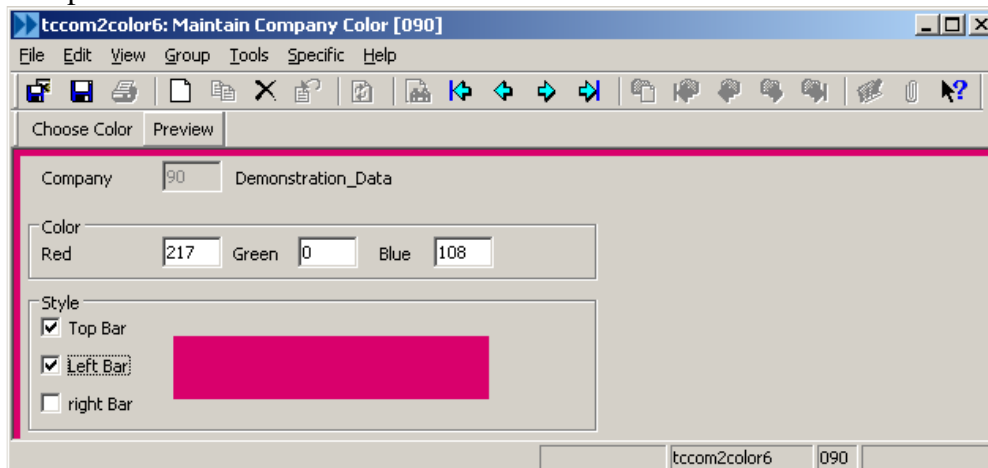
Chose the color and click on OK. You can see the color you selected in the box under the Red, Green and blue settings:



bColor-Changer will draw a colored bar(s) on your sessions and you will only need to decide the position (top, left and/or right). Click on the Preview button to see how it would look like:

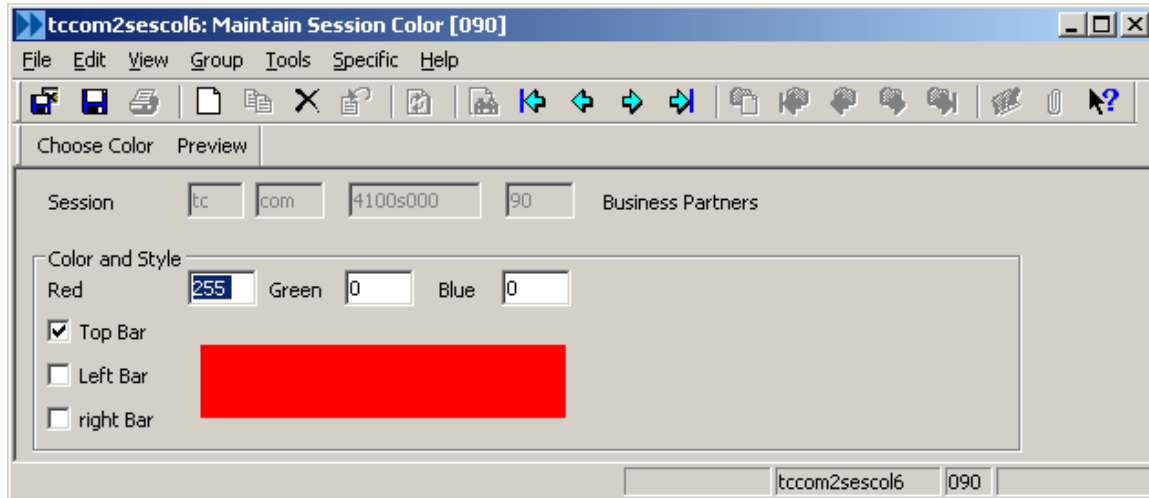


Another Example:



Defining Session's Color & Style

You can define some session to have their unique color using tccom2sescol7.

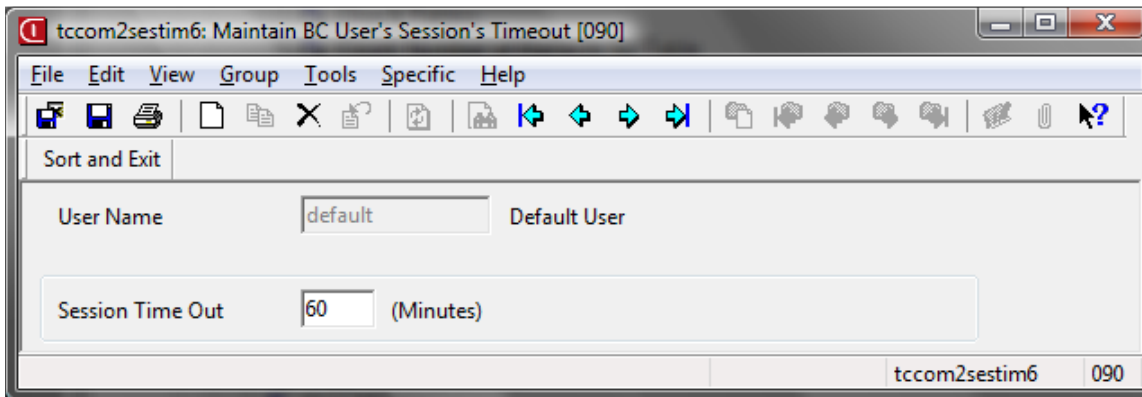


Just insert the session code, choose a color and save it.

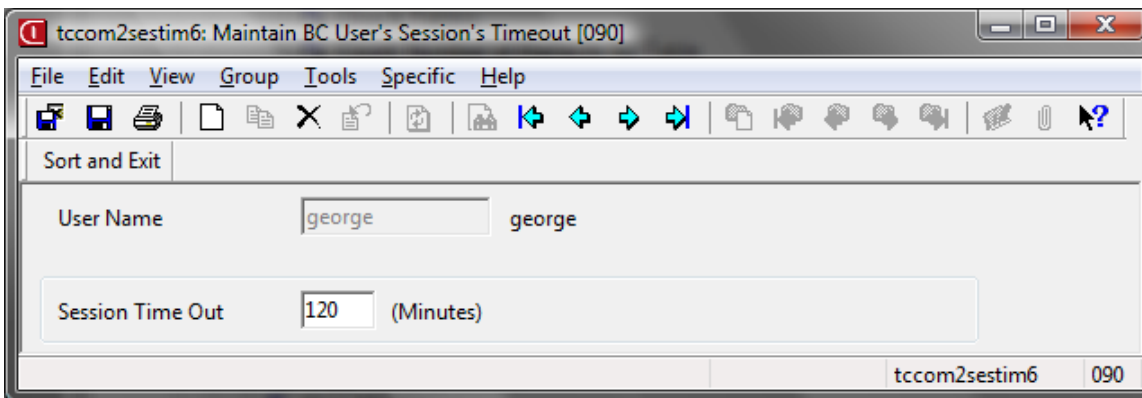
Maintain BC User's Session's Timeout

bColor-Changer has the ability to log the user out after a predefined period of time, in which the user did not work on Baan or there was no active process running in it. This period of time can be defined in the “Maintain BC User's Session's Timeout” session (**tccom2sestim7**). In order to activate BC session timeout feature you need to set the *Time_Out* bcc.ini variable to “Yes” first.

In this session, you can set the default period of time for the whole company in the “default” entry



Or set the period of time for a specific user



If you set the timeout to “0”, this means that the user has no timeout limit.

Adding *bColor-Changer* at Startup for all users

bColor-Changer is a process that works in the background and colors the forms depending on the settings in tcom2color7.

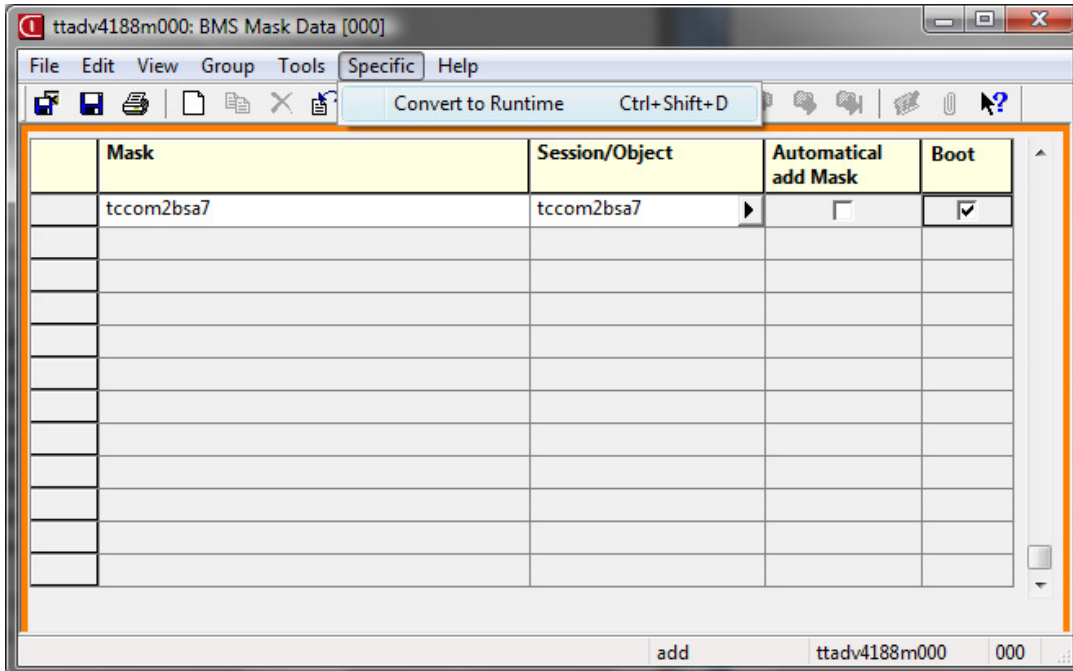
If all (or most) users will be using bColor-Changer, you can add it to work in startup for all users. If few selected users will be using it, you may wish to add it individually, as described in page 10.

To add *bColor-Changer* so that it automatically works at startup for all users, the following will need to be done.

If you are upgrading from an older version delete the old entry and make a new one.

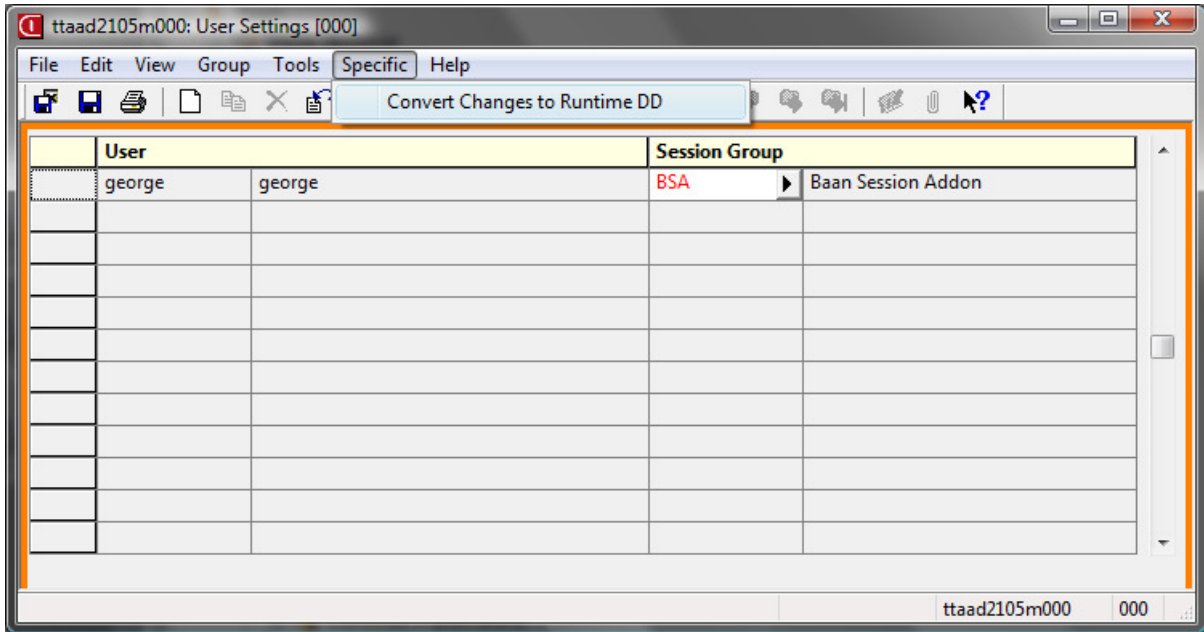
Add session tcom2bsa7 to the BMS Mask Data (ttadv4188m000). Here are the steps:

- a) Insert **tcom2bsa7**
- b) Check the **boot** check box
- c) **Save**
- d) Click on **Convert to Runtime**



This will make *bColor-Changer* work for all the users (except the users who their login names are defined in written in \$BSE/BHC7/settings/users.dat – Read Page 12)

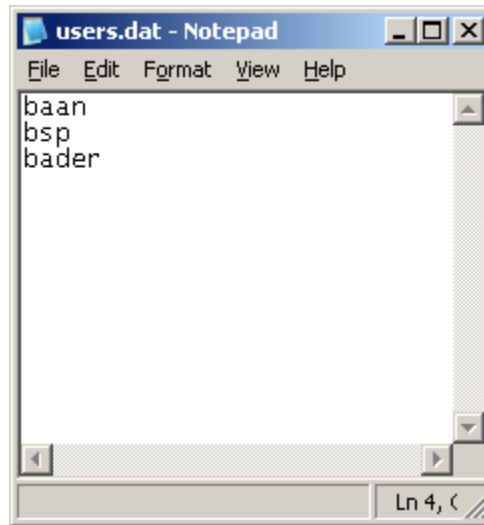
- 3) Set the group name in the user settings using ttaad2105m000
When done, convert to Runtime Data Dictionary



This will make *bColor-Changer* work for this specific user (baan). To add *bColor-Changer* for additional users, repeat step 3 for each one of them.

Excluding Users

If you are using BMS Mask Date to start *bColor-Changer* for all users, and there are few users that do not wish to work with *bColor-Changer*, you should include their login ids in the following file: \$BSE/BHC7/settings/adm/bccusers.dat





Warning

If you are unfamiliar with UNIX/NT commands or with Baan tools, please contact your Systems Administrator before you proceed with the installation. If you have any questions, please contact us, and we will arrange to have a Technical Support Person assist you in installing bColor-Changer Changer.

By installing this demo version, you are licensing this software for an initial thirty (30) day evaluation period only.

To receive a copy of the full NAZDAQ license agreement, please contact info@nazdaq-it.com

Trademarks

bColor-Changer is a company trademark of NAZDAQ Ltd.
All other referenced company and product names may be trademarks or registered trademarks of others.

NAZDAQ

For support, please send examples/ print screens to info@nazdaq-it.com

Our office Hours are Monday - Thursday 10:00 – 19:00 and Friday 10:00 – 17:00 GMT +2

Check our WEB site for other Baan Related Products

www.nazdaq-it.com

Revision A; June 2010