

bHot-Link 7.0

View and Manage your files from within Baan IV

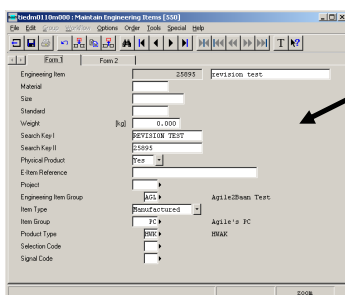
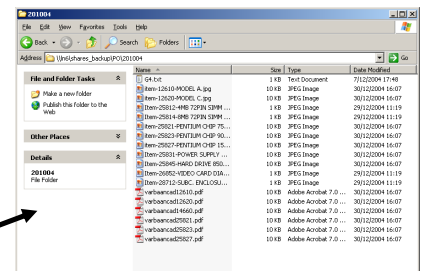
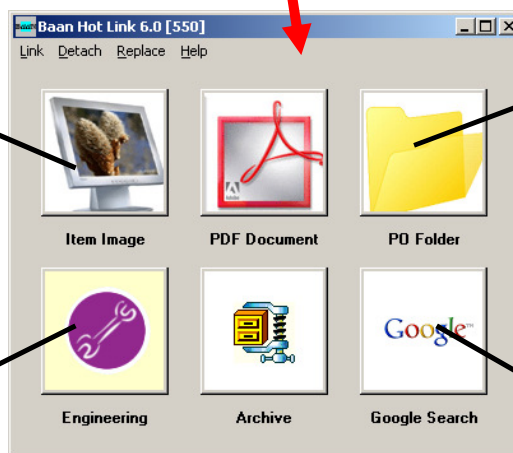
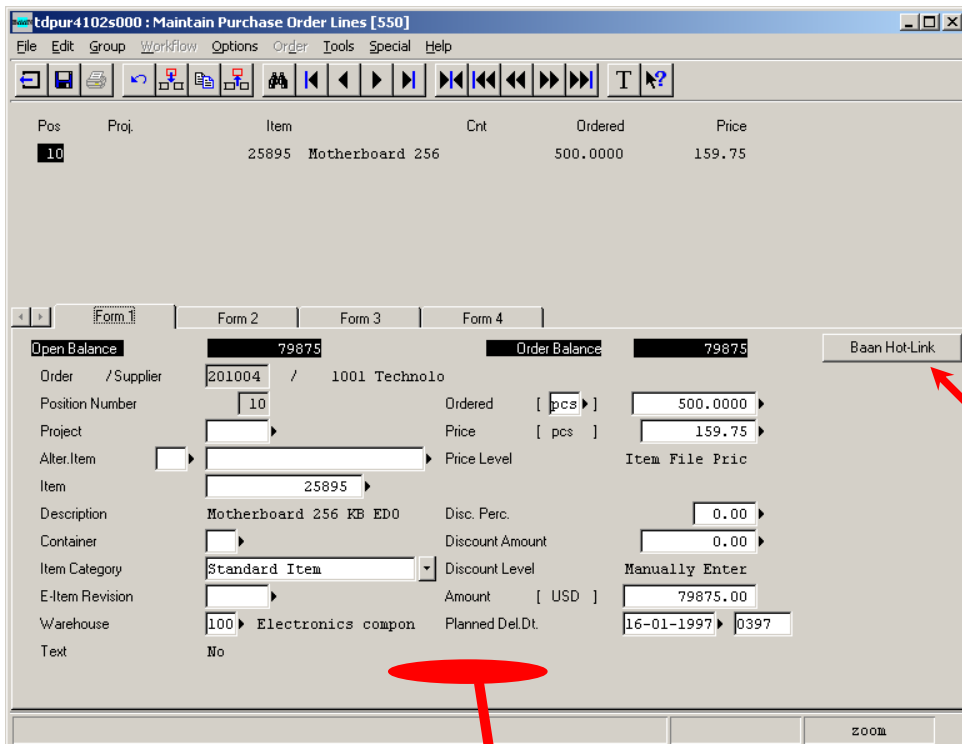
Table of Contents

| | |
|--|----|
| Overview | 2 |
| Installation | |
| Installing bHot-Link – UNIX | 4 |
| Installing bHot-Link – Windows | 5 |
| Upgrading to bHot-Link 7.0 | 6 |
| Installing bHot-Link – Baan Tools | 7 |
| Installing bHot-Link 7.0 menu | 9 |
| Copy for Non-English Installations | 11 |
| Defining | |
| Mapping bHot-Link Data | 12 |
| Hot Links Examples | 16 |
| Managing Files from bHot-Link | 21 |
| External integration with Email / Printer | 22 |
| Activating bHot-Link | |
| Overview | 24 |
| Adding a button or an Image without touching the Forms/Menus | 26 |
| Adding a zoom field to the session’s form | 33 |
| Adding bHot-Link to the session’s Special Menu | 36 |
| Adding bHot-Link to the session’s sub-menu | 37 |
| Adding bHot-Link to the session using source code | 40 |
| System Issues | |
| bHot-Link Log | 41 |
| bHot-Link parameters - bhl.ini file | 42 |
| Maintain bHot-Link users permissions | 43 |
| Define Local Temp Directory | 44 |
| General Information | 45 |

Important: Please read last page before you proceed with installation

Overview

Wouldn't it be great if you could access corporate documents from within Baan? The following is example of how *bHot-Link* allows you to connect to documents and applications from within a Baan session, and opening an intermediate sub-menu before you can access a whole range of files.





bHot-Link links between Baan sessions and files based on a session specific logic and does not require a man-made link between every record and file. Based on the company's naming convention, we create a mapping scheme that is good for all records. As an example, if you wish to create a link between Maintain Item Data and the item drawings, while drawings are saved in an archive with the name <item number>.pdf - then all you have to do is to create a mapping entry for tiitm0101m000 to reflect this logical connection.

File names that can be "linked to" are usually derived from values in the current session the user is standing on at the moment. *bHot-Link* supports a whole range of variables that can pick from the session in order to form the name of the file. You can use up-to seven values from within the session, up-to three values from tables we can "join with" – in addition to using free text and replacing characters.

bHot-Link does not only link to files, but can also link to a folder or website – and can also run a dos application or a Baan session, all using variables from the session we link from to create meaningful links. It can open the door for 12 links from a given session – with the possibility to have different links for different Baan companies.

bHot-Link does not only link to existing files and folders – but allows you to manage them from within Baan. If you create a new file and wish to have it copied to the specified folder with the agreed name from within Baan, a file browser is launched and will assist you to safely take your new file and deposit it in the designated directory with the correct name, based on the rules you have in place. This possibility is granted to users with the right access and every change is saved in a log file so it can be later-on monitored.

bHot-Link offers other features like the possibility to quickly attach all links to an E-mail and send it. This could be useful when you wish to transfer all related data to an external source like a subcontractor.

There are different methods to activate *bHot-Link*. In version 7.0, we introduced a new method that does not require any change in the code or even any Baan customization experience. It is enough to define an entry for the link and it will be activated by a background engine that runs for all sessions. This new method allows you to add buttons or GIF pictures without touching the Baan code – and linking to files, folders, Baan sessions or run applications. Other possibilities for activating *bHot-Link* are by changing the Baan Form, the Baan Source (if you have access to it) or changing the session menu – which all require Baan Tools expertise and maintenance.

Another advantage of using the background process method for activating *bHot-Link* is the possibility to add pictures to sessions, like having a picture of the employee in Maintain Employees. These pictures can be clickable - and take you via *bHot-Link* to a range of other links.

One of the users of *bHot-Link* once said:

We also realized that the range of applications where Baan Hot-Link can be applied is only limited by our imagination. We quickly found uses for bHot-Link in customer order entry, (which is where we were looking for a solution, but discovered several more applications beyond the original one, like Purchasing, Warehousing and Others). Clearly this is a tool we expect to use for a long time. bHot-Link is changing the way we use Baan at Conwed Plastics. We now have an avenue of information access for users we were not able (at least easily) to open before.

We strongly recommend you check the rest of this manual. For questions, please don't hesitate to contact us.

Installation - Overview

In this section, the installation procedure will be explained. The package (bhc70p4a.tar) contains the Baan dumps, executables and some settings files.

Installing *bHot-Link* - UNIX

If your Baan System is installed on a Windows NT Machine please proceed to page 3. Otherwise, follow the instructions below.

- 1) Transfer the file bhc70p4a.tar to your Unix Machine (Using FTP in binary mode)
- 2) Log into your Unix Machine Using telnet as user bsp and change your directory to the one where the file bhc70p4a.tar is located. Variable \$BSE should be defined in this login.
- 3) Extract the file bhc70p4a.tar (tar xvf bhc70p4a.tar). Upon Completion of the extract, a Directory named bhc7.0d will be created.
- 4) Change directory to the one just created
cd bhc7.0d
- 5) Create a directory under \$BSE for installing BHC7
mkdir \$BSE/BHC7
- 6) Copy all files and directories from dump to the new directory created
cp -R * \$BSE/BHC7
- 7) Change permissions on directory \$BSE/BHC7 and files inside so you can read and write to this directory.

Note: If you are upgrading, rename the file *.ckl in \$BSE/BHC7 to bhl70p4a.ckl

- 8) Copy the *Demo Activation Key* (bhl70p4a.inp) or the *Product License Key* (bhl70p4a.ckl) to the \$BSE/BHC7 directory

Proceed to page 6

Installing *bHot-Link* – Windows NT or Windows 2000

- 1) Save file bhc70p4a.tar to disk
- 2) Move to the Folder where bhc70p4a.tar was saved
- 3) Unzip the file bhc70p4a.tar Upon Completion of the extract, a folder named bhc7.0d will be created.
- 4) Open folder bhc7.0d
- 5) Create a directory with the name BHC7 under \${BSE}.
- 6) Copy all contents of bhc7.0d (Including Subdirectories) to \${BSE}/BHC7 folder
- 7) Copy the *Demo Activation Key* (bh170p4a.inp) or the *Product License Key* (bh170p4a.ckl) to the \${BSE}/BHC7 directory

Note: If you are upgrading to BHL 7.0, rename the file *.ckl in \$BSE/BHC7 to bh170p4a.ckl

Upgrading to *Baan Hot-Link 7.0*

NAZDAQ has done few changes to the \$BSE/BHC7/settings directory. Now it is divided to sub folders so that it will be better organized.

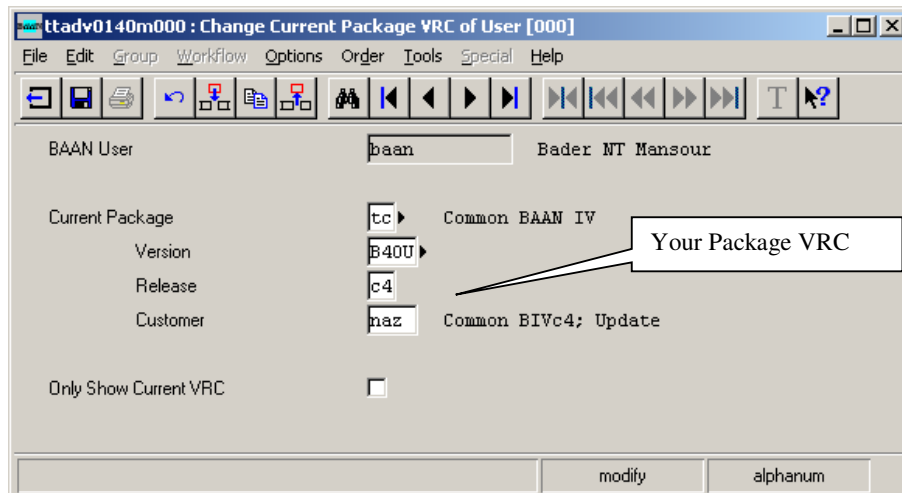
In order to upgrade to 7.0 version you need to copy all the files from \$BSE/BHL6/settings (or older) manually to the right subfolder. Below is a table that explains where to put each file:

| Sub Folder Name | File Name |
|-----------------|------------------------------------|
| adm | bhl.ini |
| | temp.dat |
| | bhl.log |
| | system.ini |
| | files2copy.dat |
| | Other files that should be copied! |
| | logo.gif |
| | |
| map | isessions.dat |
| | i<session>.cfg |
| | |
| ext | esessions.dat |
| | e<session>.cfg |
| | |
| prm | psessions.prm |
| | p<session>.prm |
| | |
| san | adn_sessions.dat |
| | ses_adn_<session>.cfg |

Installing *bHot-Link* – Baan Tools

Follow the following steps to install *bHot-Link* on your Baan Server

- 1) Log into Baan (as user baan or user bsp) and Change package VRC of user using ttadv0140m000

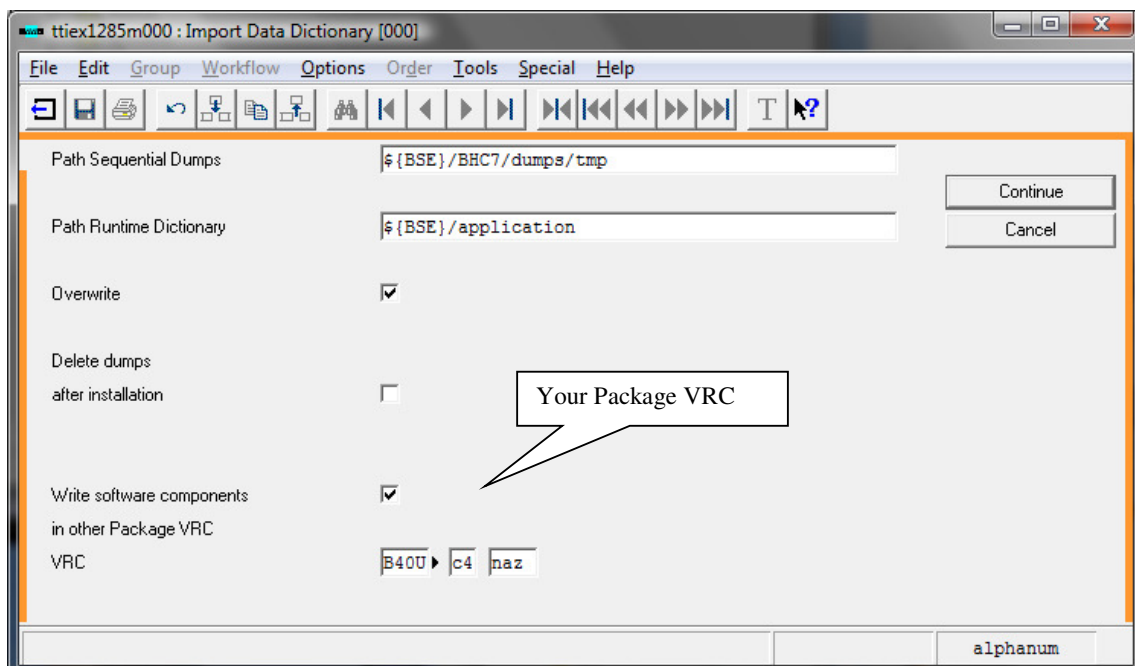


- 2) Run “Import Data Dictionary” – **ttiex1285m000** for the following under **dumps**:

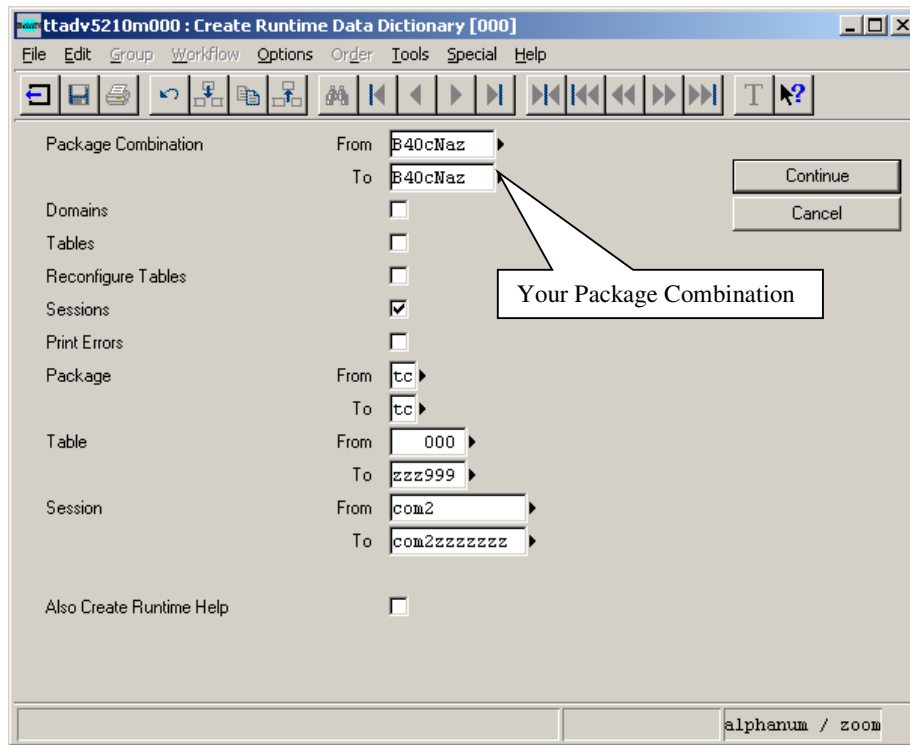
bsa sestim tmp

under **hdumps**:

adn bhl ext map mnu sesadn usr



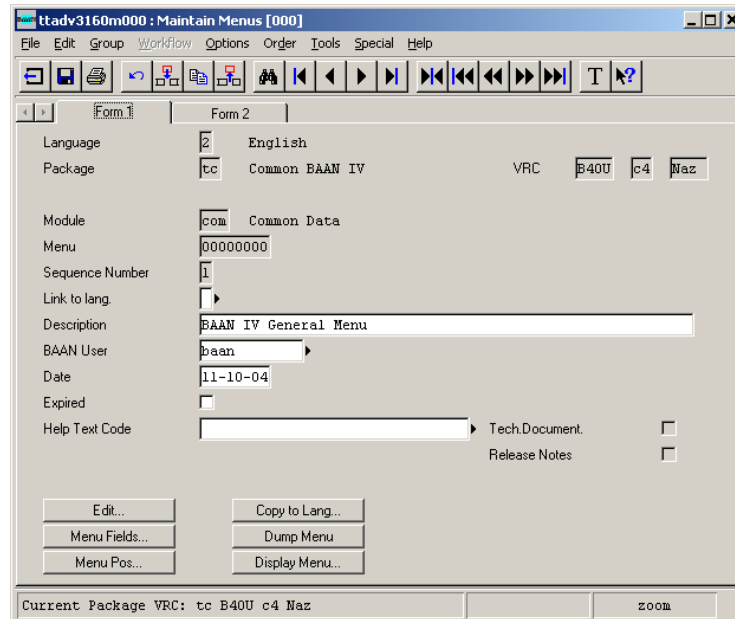
3) Create Runtime data Dictionary - ttadv5210m000 from session “com2” to “com2zzzzzzz”



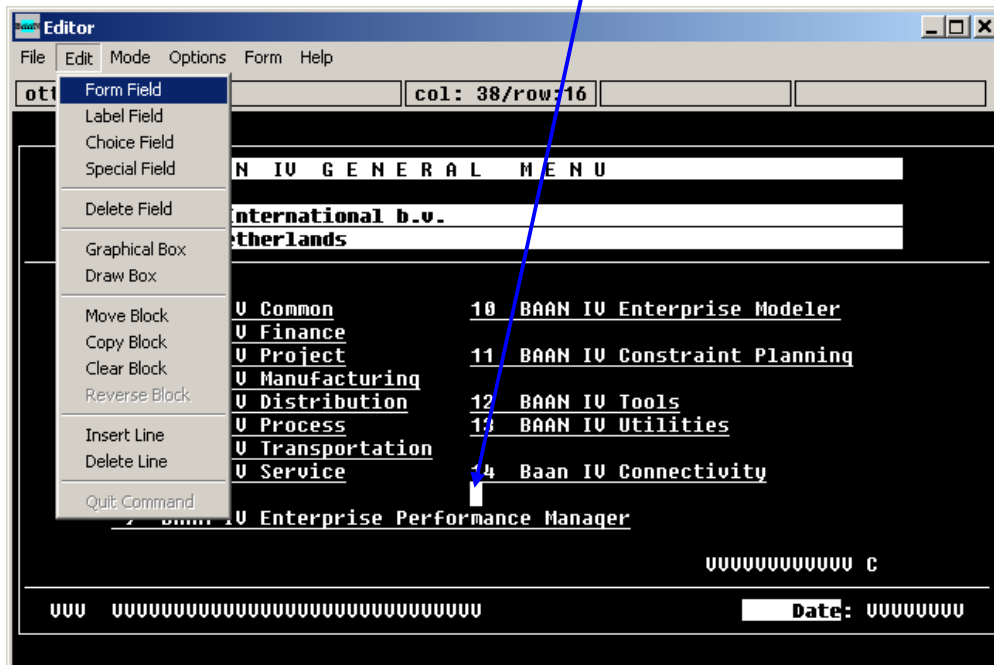
Installing *bHot-Link* 7.0 menu

You can add the bHot-Link menu to your BW Browser. **Basic knowledge of Baan Tools is needed.**

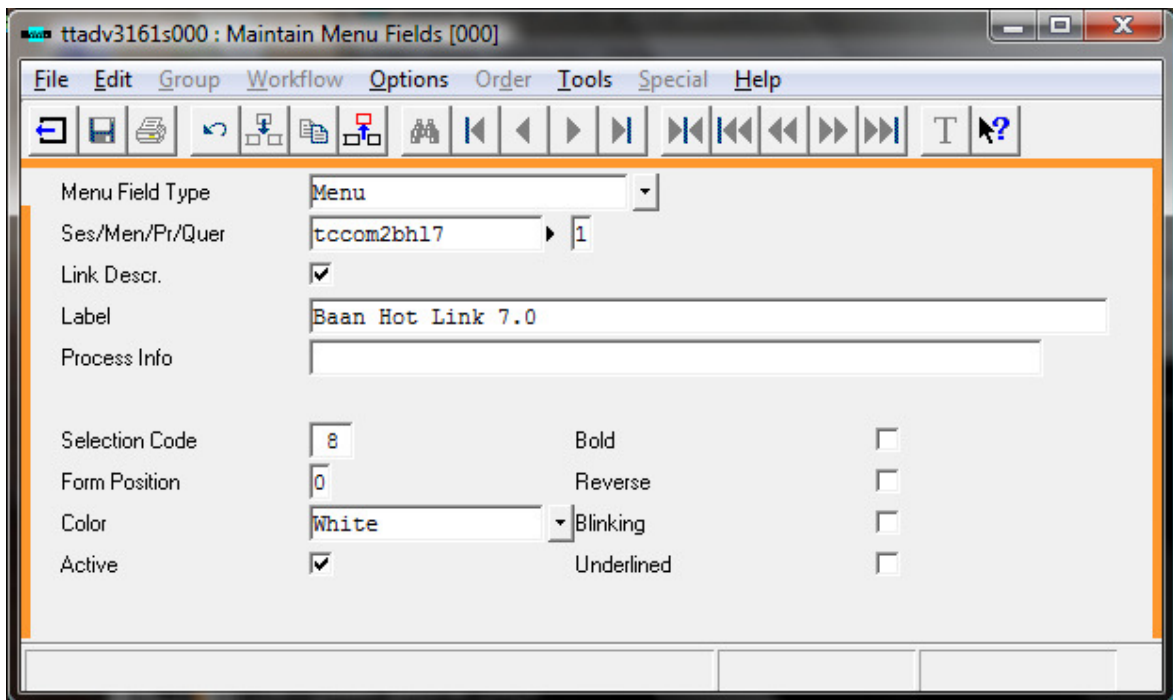
1. Maintain the Baan IV General Menu (tcom0000000) using Maintain Menus (ttadv3160m000). Copy the menu to current package VRC.



2. Edit Menu and add a form field in the location you wish

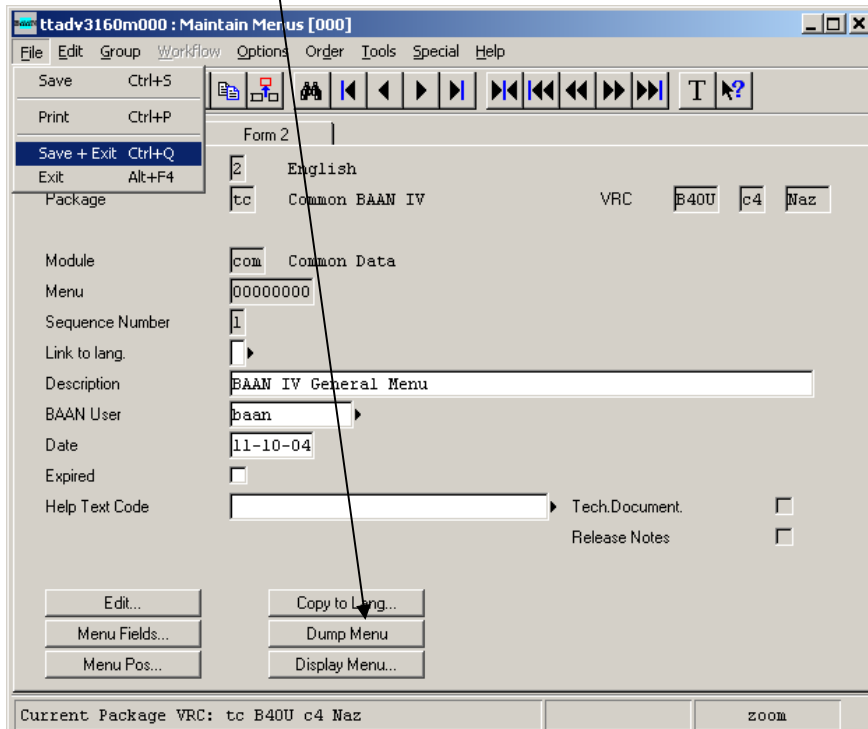


3. Maintain the form Fields in the following way:



Then “Save + Exit”. Also “Save + Exit” in the Editor screen

4. After the form field is added and saved, dump the Menu and Save + Exist

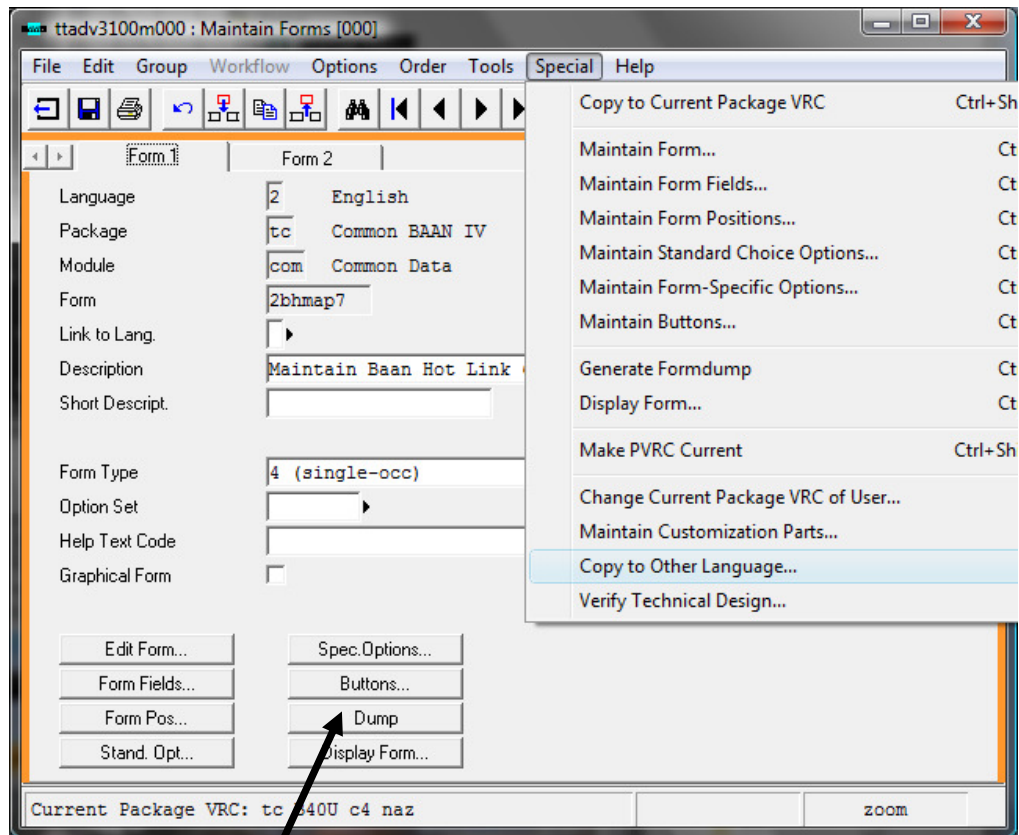


Copy for Non – English Installations

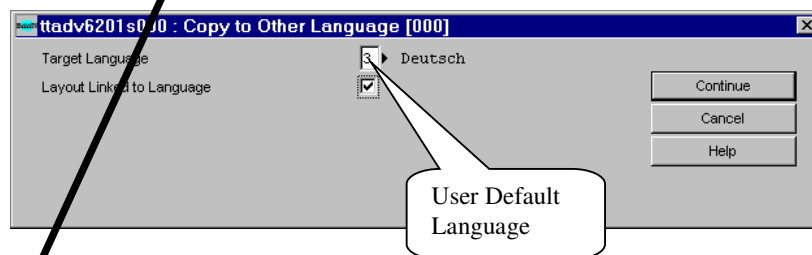
If some of your users have a language different than English (2) run steps 1 – 3 otherwise your installation is ready, proceed to the next section

You will have to copy the following Forms tcom2bhmap7, tcom2bhex7, and tcom2bhurs7, tcom2bhtmp7 and tcom2sesadn7. The following is an example:

1) Maintain Forms - ttadv3100m000 - for the form tcom2bhmap7



2) Using *special*, copy form to user's language



3) Click the dump button in the Maintain Forms screen

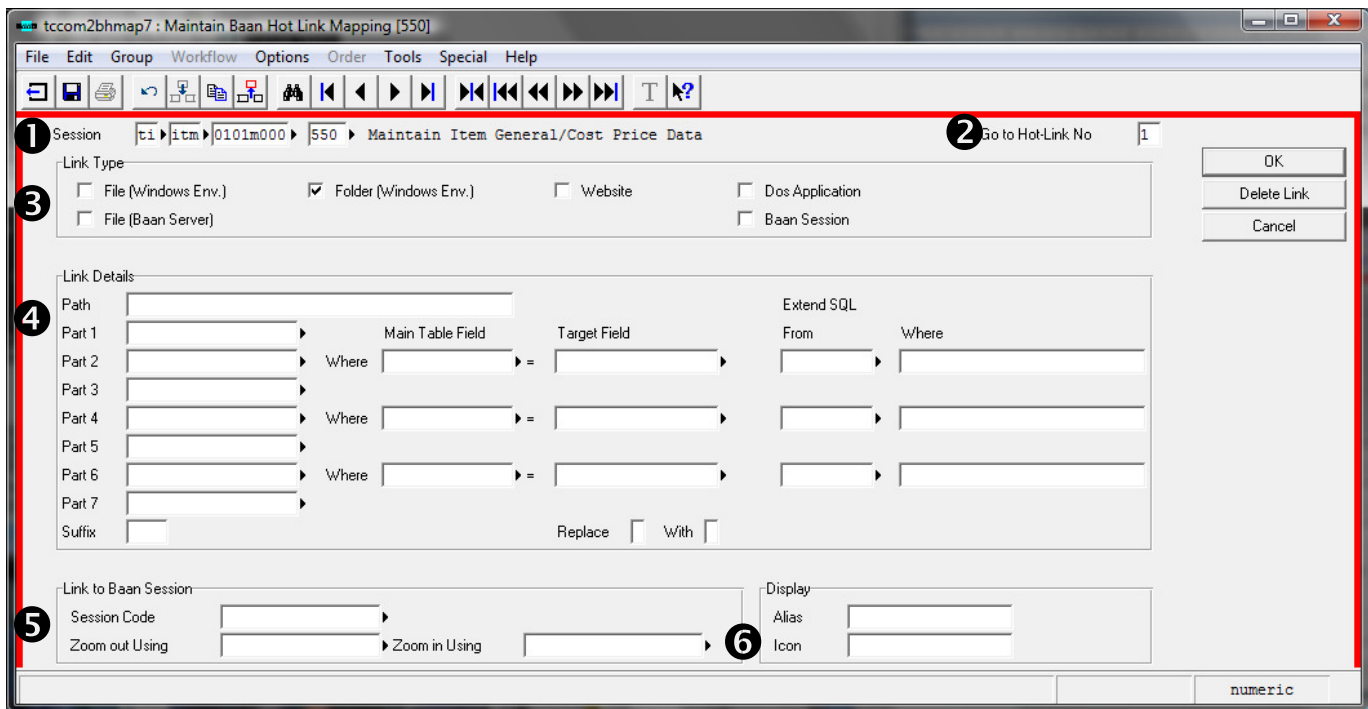
Defining

This section will explain how to define *Baan Hot-Link*.

Mapping *bHot-Link* Data

bHot-Link can link any session with any relevant file, folder, website, file from the Baan server, dos application or Baan session

Use Maintain *bHot-Link* session (tccom2bhmap7) to map your links (12 maximum) per session/company. Every company has its own naming convention. *bHot-Link* supports a name that is related to one or more fields from the session's main table. The following is short explanation about the tccom2bhmap7 fields



① Session Code & Company.

Here you specify the session name which you want to link from and the company number. When the company number is 000, it servers as the default for all companies.

② Hot Link Number

You can define up to 12 links per session. When one link only is defined, it will be open automatically without going into to an intermediate window.

③ Link Types

Files & Folders:

You can link your session with any kind of file that can be accessed from the client windows machine or Baan server. For example, images, documents, sheets, Autocad or any other. You can also open any folder that can be accessed from the client windows machine or any deeper file that is saved under sub-folders. You can also create and manages your files and folders from within *bHot-Link*.

Websites

You can link you session to any website. For example, you can open any relevant site that include information about the current Baan record

Dos application

From within your session you can activate any DOS application that you want. For example, you can run any batch file or job. Argument can be placed in the part fields.

Baan Session

From within your current session you can zoom to any other Baan session directly to the relevant record. For example you can zoom from Purchase order lines to maintain Item data and view the same item in one click.

④ Link Details

In this section we specify the different parts that make up each link.

The link consists of a **path**, a **name** and a **suffix**.

Path

Contains a folder or a web site

Name

bHot-Link allows you to build a link made from up to seven different parts. The following are the different possibilities for each part of the name:

1) Fixed string

Example: "*item-*"

2) Field from the session's main table

Example: *tdpur041.item* (when the session's main table is *tdpur041*)

Text fields are supported. In case a text field is used in one of the parts, the corresponding first line of the text file will be picked.

3) Slash “\”: Specifies a sub directory.

4) Part of a field

Example: The first and forth letters of a field: *tdpur041:1,4*
 The first 4 characters of a field: *tiitm001:1-4*

5) Functions

Example: *tdpur041.odat:year* will result in the year from the Order Date.
tdpur041.odat:YYYYMMDD

6) Wildcards:

bHot-Link supports up to two wildcards for every link (For Windows files and folders only). When wildcards are used and one entry exists that match these conditions, it will be picked automatically. If more than one link is matched, all options will be shown so the user can choose one of them.

7) Fields from a different table

bHot-Link allows you to include fields from a table different than the main table in populated link name.

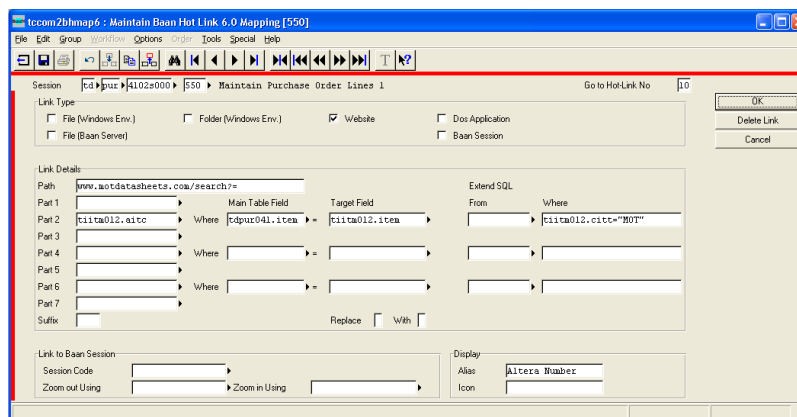
Example: Use fields from Maintain Item Data table when linking from within Maintain Purchase Order Lines. As the main table is Purchase Order lines (*tdpur041*) a join between *tdpur041* and *tiitm001* need to be created. This can be accomplished by creating a where statement with *tdpur041.item = tiitm001.item*

Using fields from a different table is possible in part2, part4 and part 6 only. When this option is chosen, the desired field should be filled in the chosen *part*, and the where statement to join tables need to be keyed in *Main Table field* and *Target field* (see example in coming pages)

8) Fields from different table with a free SQL statement

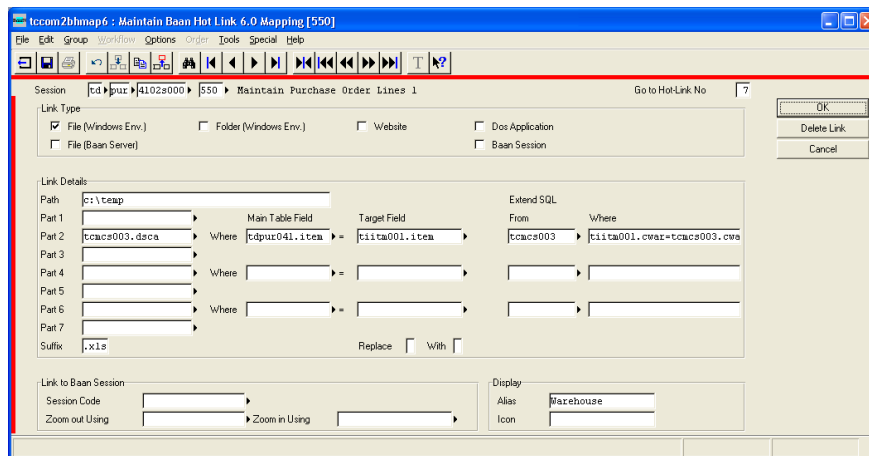
As mentioned in (7), you can include a field from a table different than the main table in populated link name. If the end result needs more than a join between two tables, additional "From" and "Where" closures can be added to the select statement.

Example: To search for datasheet of a certain item from with Maintain Item Data, from a specific manufacturer, it is not enough to join Maintain Item Data (*tiitm001*) and Maintain Alternative Item Codes (*tiitm012*). You need to add a condition for the Alternative Code system (*tiitm012.citt="MOT"* for Motorola). This additional condition to the joint statement is added in "*Extend SQL, Where*".



In case the extension of the SQL statement requires more than 2 tables, additional tables can be added in "Extend SQL, from" and the joint statement and any additional conditions will be added in "Extend SQL, Where".

The following example links to a file that is based on the item's warehouse description. Three table join is needed and is defined as in the following:



Character Replacement

Sometime, the name of the link can be changed to reflect a change in one of the characters. This can be done using "Replace, with".

Example: Replace every occurrence of "," with "-"

Running Dos Applications:

If you are activating a dos application and want to pass some argument, part 1 & 2 are the first argument, part 3 & 4 are the second argument and part 5 & 6 are the third argument part 7 and the suffix are the fourth argument.

If the dos application is not already installed in a specific path and needs to be copied from the Baan server, the application can be stored in \$BSE/BHC7/settings/adm, name of file need to be added to files2copy.dat. Every time *bHot-Link* runs, this application is copied to the *bHot-Link* temporary local directory (Default is c:\bhl<userid>). Variable <LOCAL TMP> can be used in *path* to reflect the BHL temporary directory. This is an easy way to deploy a dos based application for use by different users.

⑤ Link to Baan Session

This section will be enabled only if you checked the baan session link type. After you insert the session code, you need to define the field that links the zoomed to session with the current one. In the zoom out field you should put a field from the current main table and from the zoom in field you should insert a field from the session that you want to zoom to. For example you can zoom from maintain item data to maintain engineering item data.

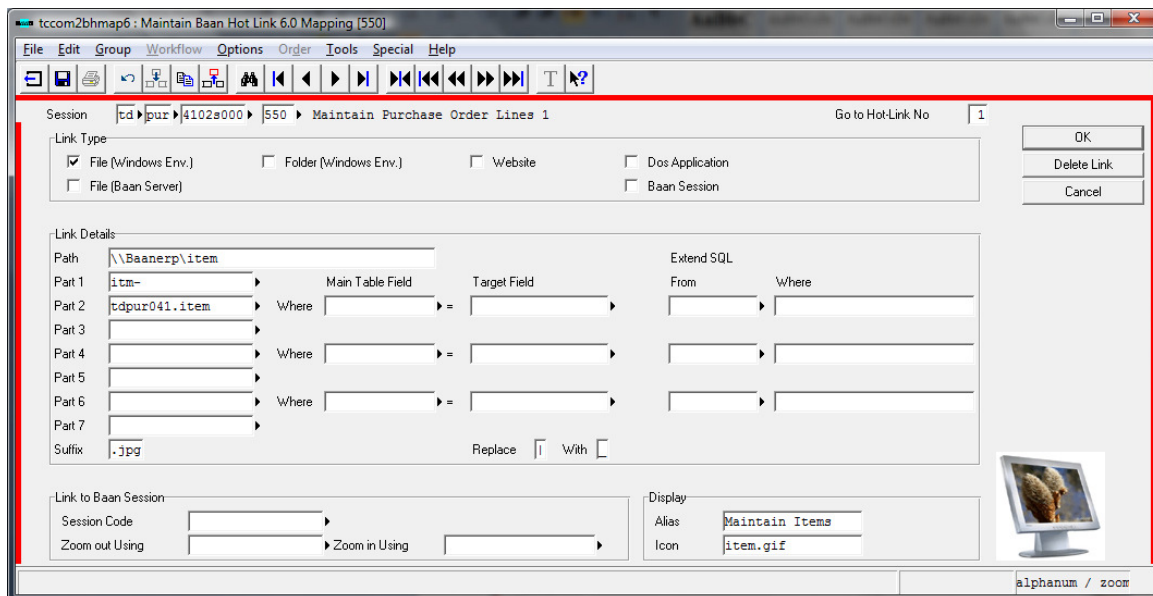
6 Display

You can set the icons and labels that will appear on the Hot Link window. The alias field is the place which you set the buttons labels and the con is where you should set the image that will appear on the button. The icon file type should be GIF and should be stored under \$BSE/BHC7/images.

Hot Links Examples:

File (from Windows)

The first example is a trivial one. If we are standing on item 28712, Hot Link will open \\Baanerp\items\itm-28712.jpg



File (Baan Server), sub folders and parts of variables

While standing on PO number 201000, Hot Link will go to the Baan server get the file that is saved under /home/purchase/20/251330.pdf. Notice how the first and sixth characters from the variable in part1 were used to specify the sub folder name. The slash in part2 means that what was in the previous part is a folder.

tcocom2bhmap6 : Maintain Baan Hot Link 6.0 Mapping [550]

File Edit Group Workflow Options Order Tools Special Help

Session: [td] [pur] [4102s000] [550] Maintain Purchase Order Lines 1 Go to Hot-Link No: 8

Link Type

File (Windows Env.) Folder (Windows Env.) Website Dos Application

File (Baan Server) Baan Session

OK
Delete Link
Cancel

Link Details

Path: /home/purchase

| Part | Main Table Field | Target Field | Extend SQL From | Extend SQL Where |
|--------|-------------------|--------------|-----------------|------------------|
| Part 1 | tdpur041.ozno:1;6 | | | |
| Part 2 | / | Where | = | |
| Part 3 | tdpur041.ozno | | | |
| Part 4 | | Where | = | |
| Part 5 | | | | |
| Part 6 | | Where | = | |
| Part 7 | | | | |

Suffix: .pdf Replace With

Link to Baan Session


Session Code: []

Zoom out Using: [] Zoom in Using: []

Display

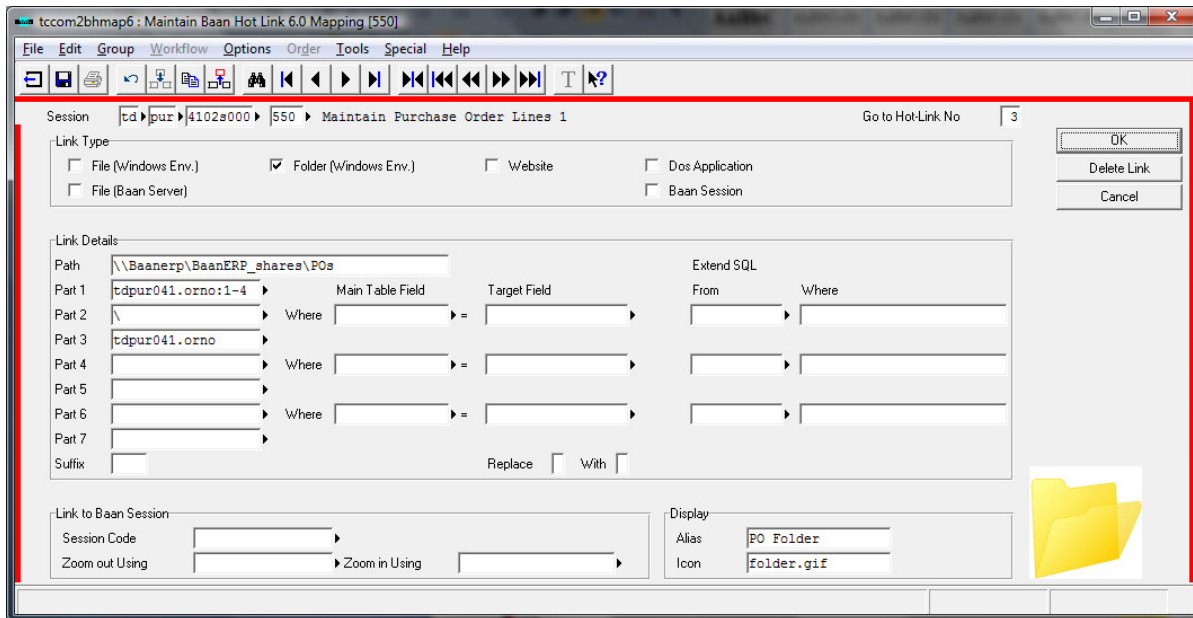
Alias: PDF Document

Icon: pdf.gif



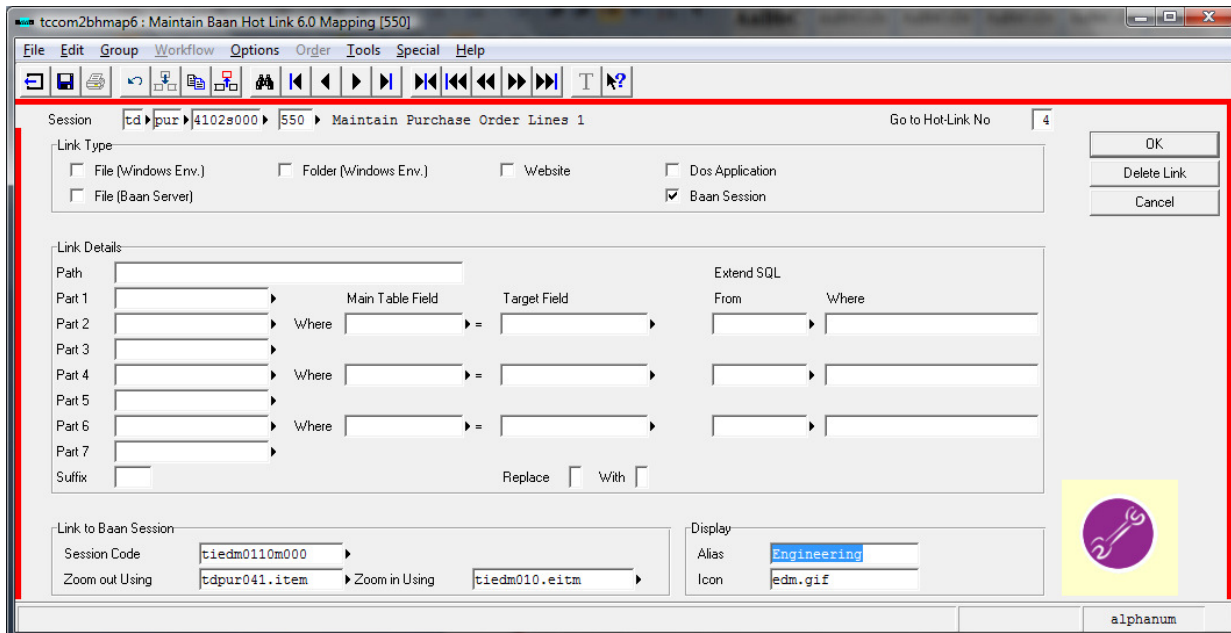
Folder, Sub-folder and parts of the variable name

In this example Hot Link will open the folder [\\Baanerp\BaanERP_shares\POs\2010\201000](#) while standing on PO number 201000. Notice how the first four characters from the variable in part1 were used to specify the sub folder name.



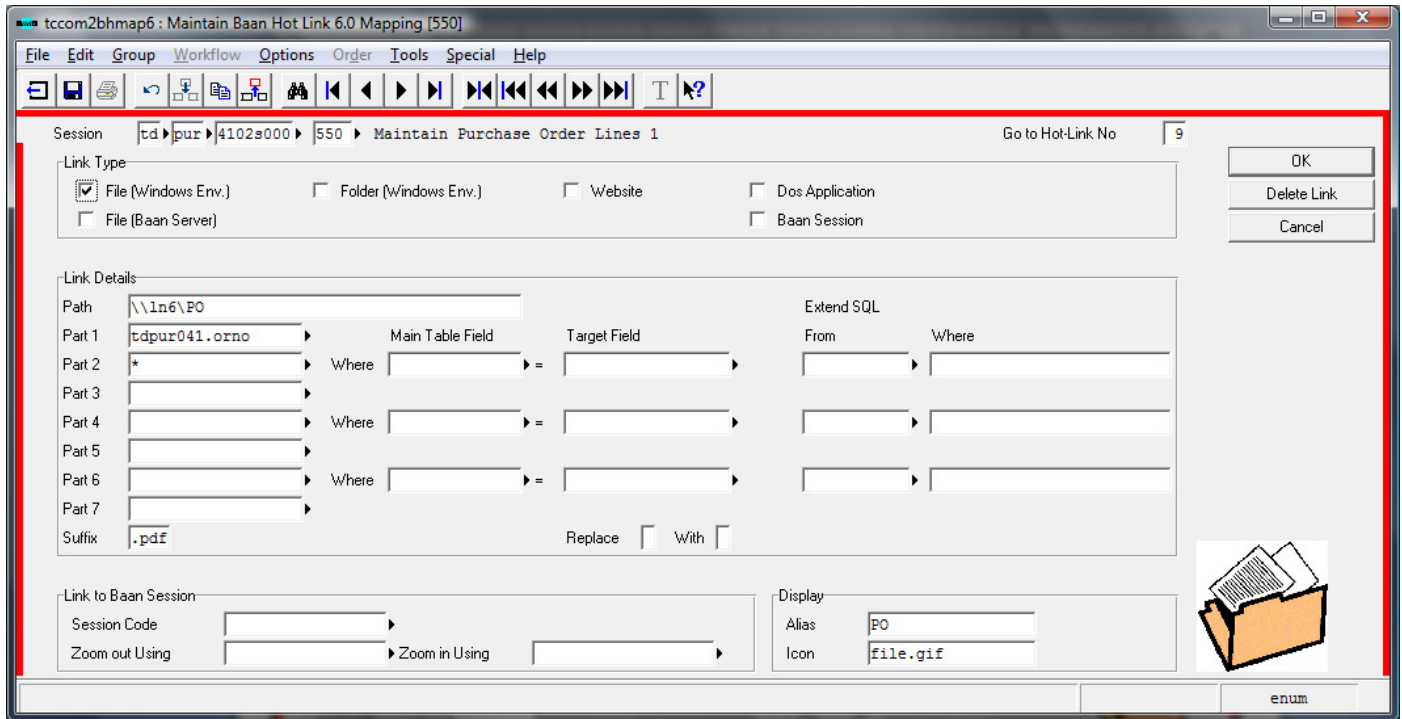
Baan Session

The following settings will zoom from Purchase order lines to maintain engineering Items. You need to define the field that relates to the session that you want to zoom to and also the main key of that session.

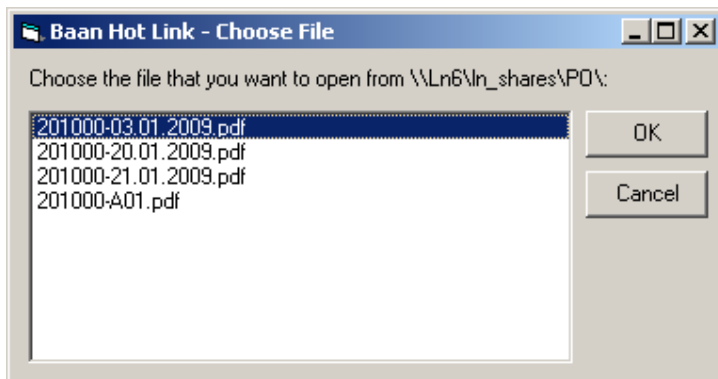


Wild Cards

Here is an example of using a wild card (in part 2)

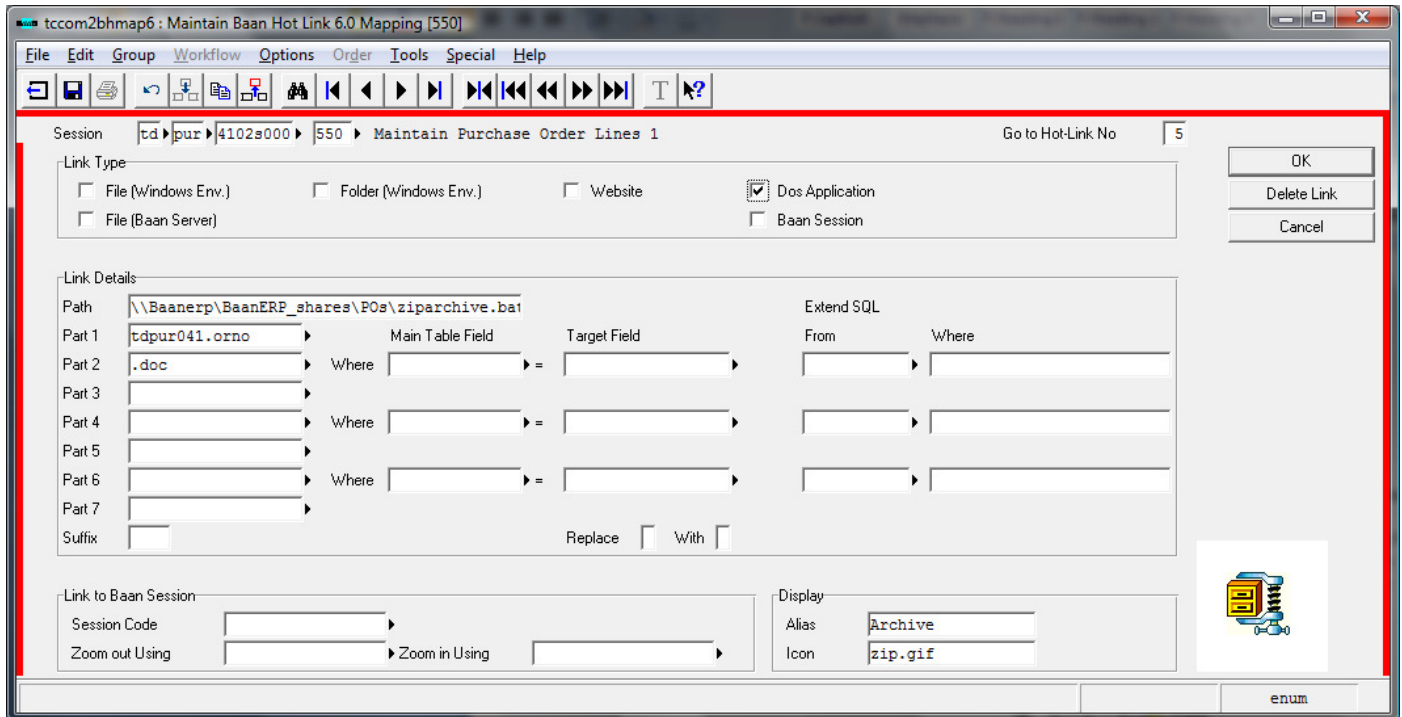


When the user clicks on the hot link, a list of all files that matches the name will be shown so that the user can select the wanted file.



Dos Application

The following example will run a batch file called “ziparchive.bat” that takes one argument, which is the purchase order document. The batch will zip the document and move it to the archiving folder.



Here is the code of this simple batch file:

```

:: Variables
set SourcePath=\\BAANERP\BaanERP_shares\POs
set TargetPath=\\Ln6\shares_backup\archive\POs
set ZipPath=\\BAANERP\BaanERP_shares\zip

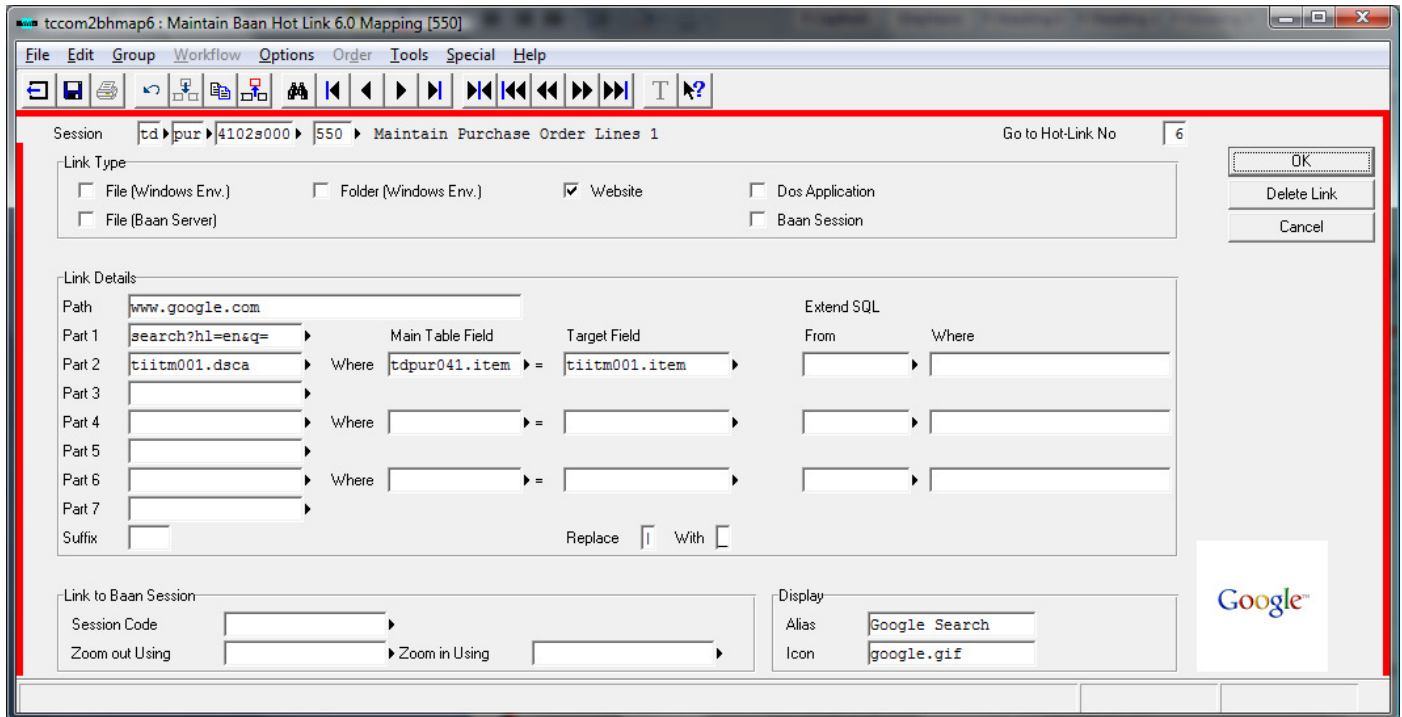
:: Zip command
%ZipPath%\zip.exe -j "%SourcePath%\%1.zip" "%SourcePath%\%1

:: Archiving
move "%SourcePath%\%1.zip" "%TargetPath%\%1.zip"

```

Website, “Where fields” and replace characters

Hot link can search for the item, fetch the item description, replace the unwanted characters and search in Google for the results. This is how you set it up

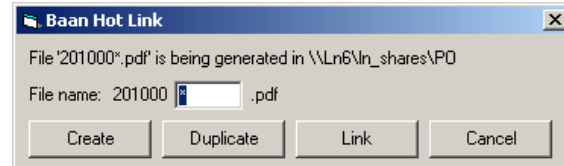
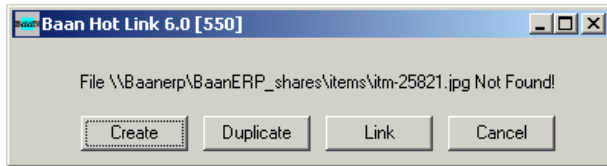


In simple words, we need to tell Hot Link to go to the same item and get its description. The description will be in part 2, since it is the final result. In the “Main Table Field” and “Target Field” we should define the where phrase so that Hot Link will find the wanted record. The item in this purchase order (tdpur041.item – which is our main table field) should equal to the item in maintain item data (tiitm001.item which is the target field).

Also notice that if the description includes any “pipe character” it will be replaced with an underscore.

Managing Your Files From Within Baan Using *bHot-Link*

bHot-Link gives you the power to manage your files from within Baan. It can create, delete, replace, duplicate and link files (depending on the user permissions). In case the file-name generated by *bHot-Link* does not exist, you will get one of the following screens (depending if you have used wild cards or not)

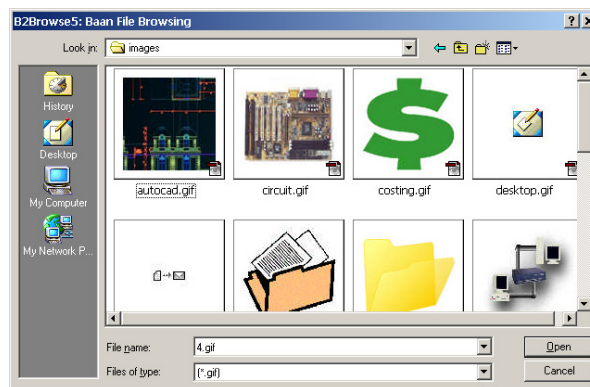


If you have used wild cards, you will have to fill the file name before continuing

Create: A blank file-name will be created based on a file called blank.<extension> that is saved in \$BSE/BHC7/temp. If for example you are linking to a doc file, you will need to create a Word template file and save it in \$BSE/BHC7/temp/blank.doc and it will be used as a basis for all new documents created in the specified folder, using the generated name. Next time you link to it, it will already exist.

Duplicate: You have the possibility to create a file based on an existing file. Many times you want to create a document based on existing document with minor changes, so it is better to copy the other document over, make some changes and save it. You can also use this feature to copy files into the folder where all files are stored. Just pick it from your local directory and it will be picked from the local drive and copied with the generated name to the generated folder name.

The duplicate function will allow the user to browse and pick the file needed. The following is a print-screen of the *bHot-Link* browser:



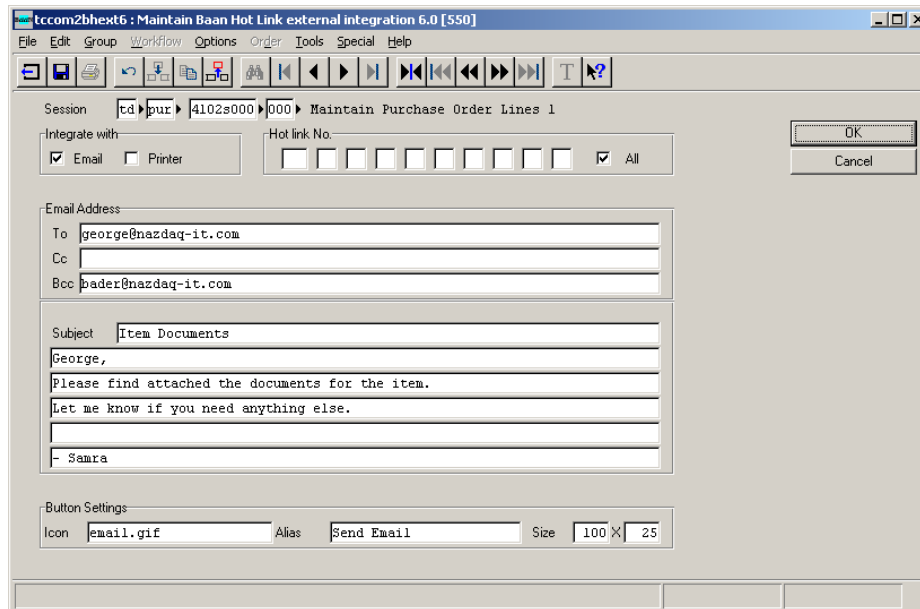
Link: You have the possibility to create a shortcut to an existing file. Many times you do not want to copy a file with a big size, so you can create a shortcut or a link to this file.

Cancel: If you do not wish to create a file. Just cancel and exit.

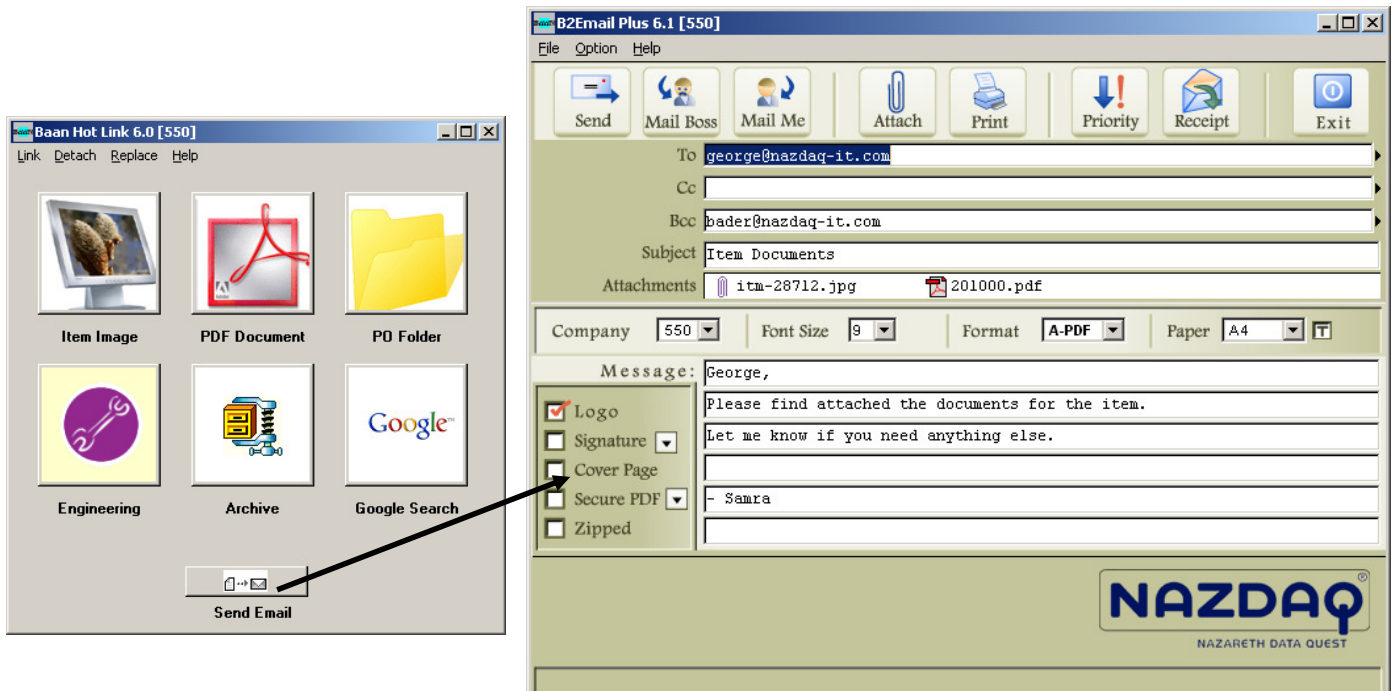
External integration with Email / Printer - tcom2bhex7

With one click you can send / fax / print some or all your Hot links via B2Email Plus (Ver. 5.0 and higher) to whoever you want. You should first have to define the hot links that you would like email/print and fill the other email related fields.

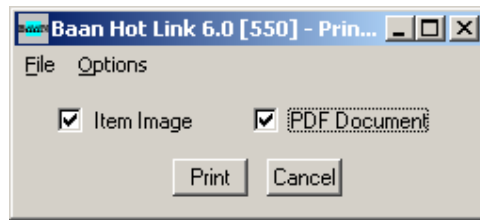
The button settings fields are used to customize the button that will appear on the Hot Link window. You can put any gif as an icon, name an alias and choose the button size.



When you activate Hot Link, a new button will be available for the email/print action.



If you choose the option from BHL's menu you will get the following Dialog (depending on your links):

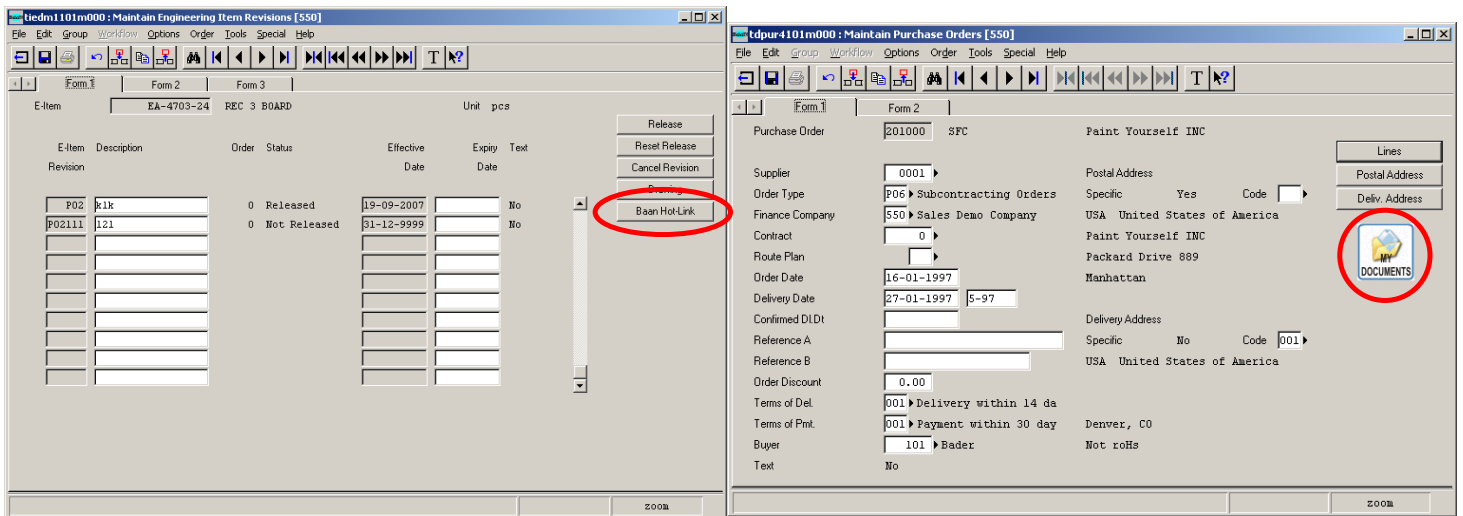


Here you can select the document that you want to print. The default settings are brought from tccom2bhex7

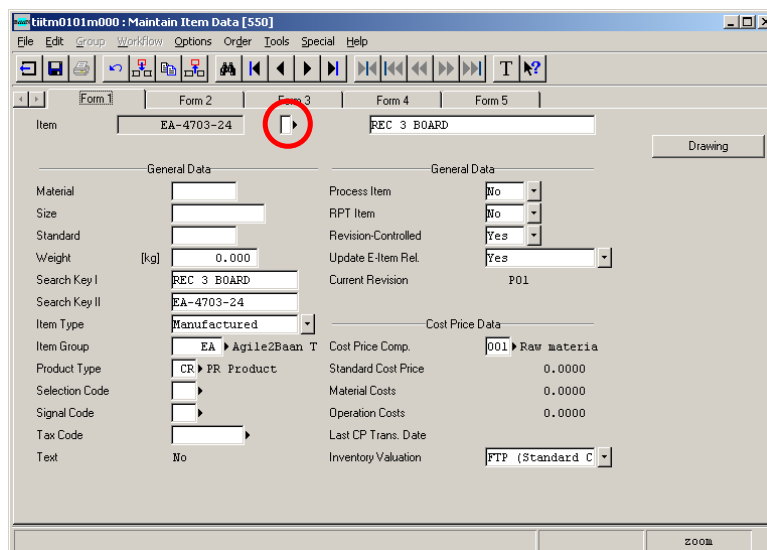
Activating *bHot-Link*

bHot-Link can be activated from any Baan session. Here are three ways to activate *bHot-Link* from a session:

- Without touching the forms, menus or code!**
 This *new feature* introduced in *bHot-Link 7.0* makes it possible to add links (clickable images/buttons) without touching the session's code, form or menu. It is based on a technology that includes a process in the background, which is responsible for adding the links without any effect to the normal use of Baan. You can also add **changeable images** on one session! For example you can see the image of every item while browsing in Maintain Item Data.

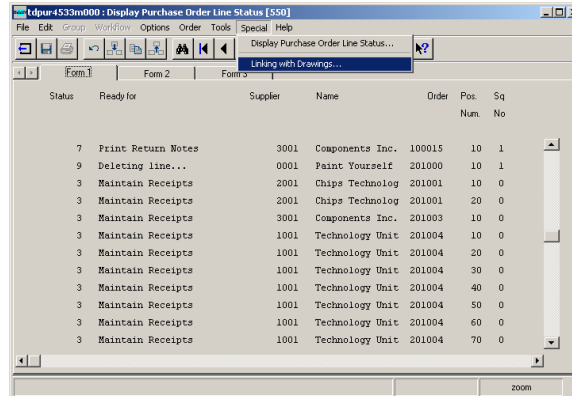


- Adding a zoom field to the session's form.**
 By editing the session's form, you can add a zoom field that will activate *bHot-Link*.



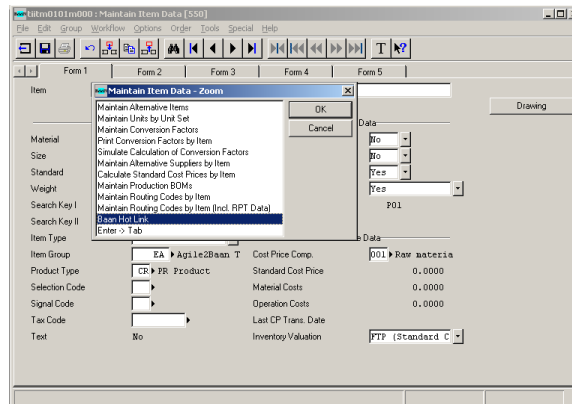
- **Adding Hot Link to the session's Special Menu.**

By editing the session's form and editing the special field you can add an entry to *bHot-Link*.



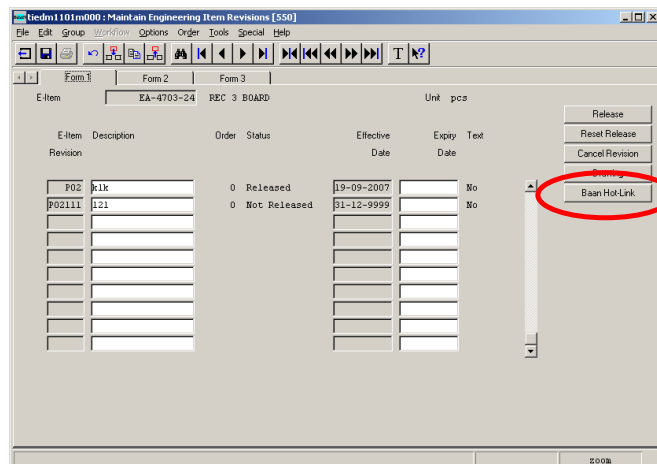
- **Adding Hot Link to a session's sub-menu.**

By editing any of the session's menus you can add an entry to *bHot-Link*.



- **Adding Hot Link to the session through source code change.**

If you have the source code of the session you can add a button or an option to the session's form and activate *bHot-Link*.

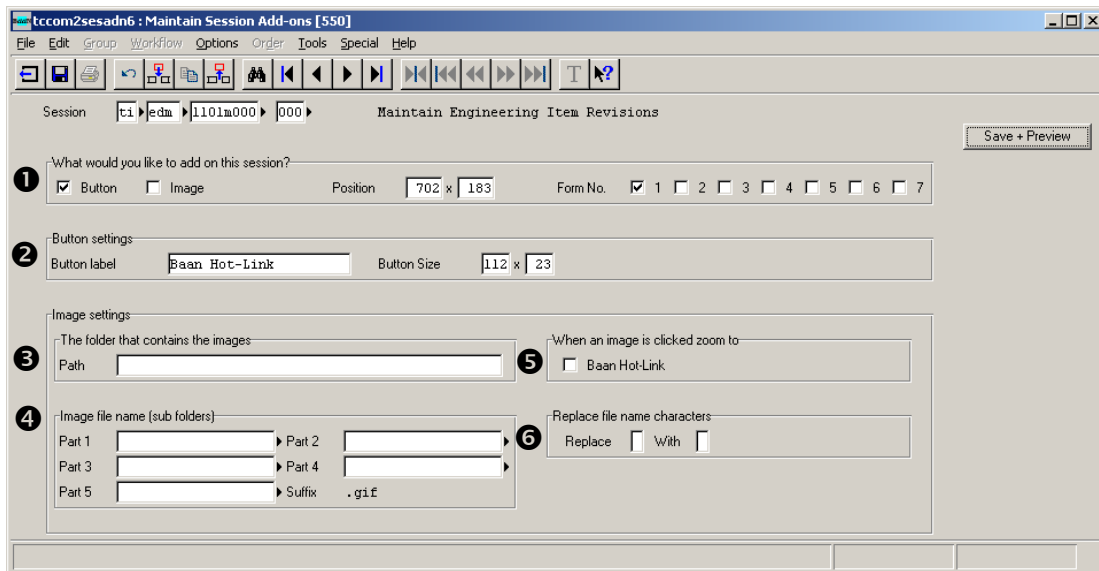


Adding a button/Image without touching the Forms, Menus or source code

Defining the add-on

Without touching any Baan form, menu or source code, *bHot-Link* 7.0 provides a *new* way to add a button or a clickable image to any Baan session. When you click on the button/image *bHot-Link* will be activated it.

Maintain Session Add-ons (tcom2sesadn7) allows you to configure what you want to add to your session. When you insert a new record (session), you need to specify what you would like to add to the session



❶ In this section you should specify what you want to add to your session; you can add an image or a button. You should also specify the positioning of your button/image (by pixel) starting from the left top corner and the forms that you want it to appear in.

❷ In the button settings section you need to define the button's label (the text that will appear on the button) and the button size. The default Baan size is 112x23.

The following fields are only in use when you want to add an image:

❸ In the path field you should fill the path of your link. It can contain the containing folder or website.

❹ In the part fields you can specify the name of the image / sub-folder that you want to add. The image file name can be built from many parts. *bHot-Link* gives the user the ability to build a file name from five parts. Each part can contain a fixed string like "itm-" it can contain a field table (like tdpur401.item) or slash "\" to specify a sub directory.

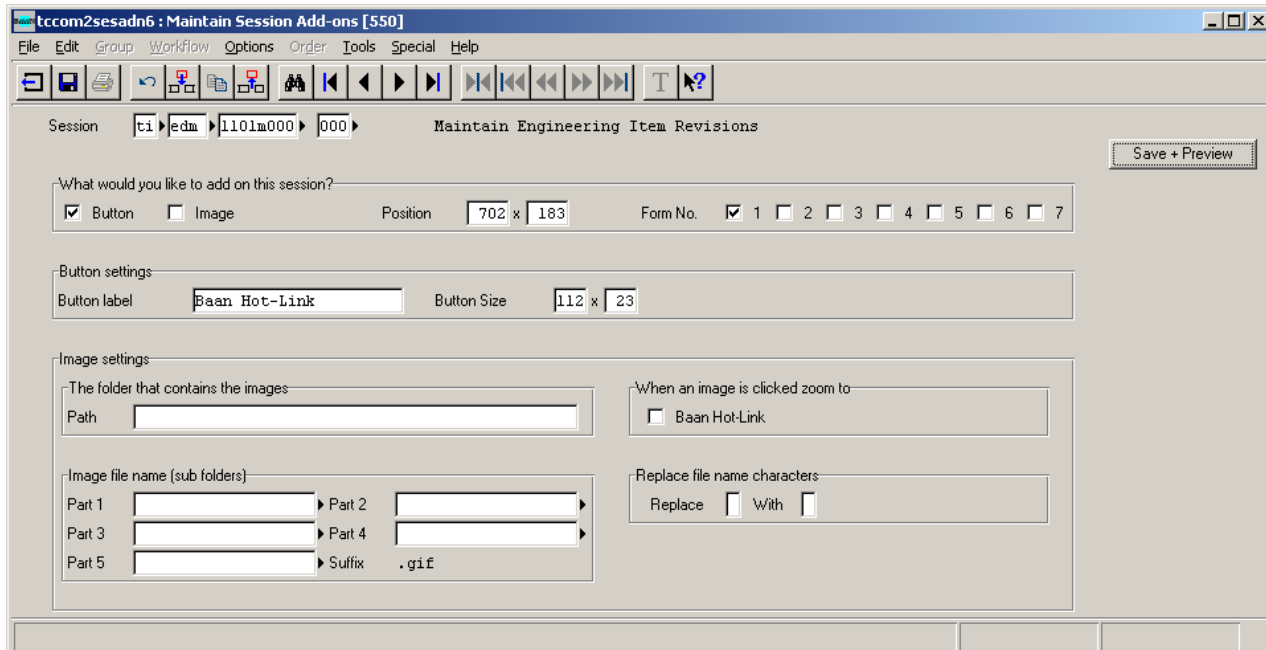
You can also select parts of the variable itself. For example select the first and forth letter or the first seven letters. To select the two parts of the variable you should add ":" after the variable name and then the two number where ";" should be between them. For example, tiitm001.item:2,4 (for item name "abcdef" – the result will be "bd")

To select a part of the variable replace the ";" with "-". For example, tiitm001.item:2-5 (for item name "abcdef" – the result will be "bcde")

- 5 Check this if you want to activate *bHot-Link* when you click on the added image.
- 6 Replace character is used for replacing any unwanted characters from the patterns. For example your item description might contains spaces while the file does not. In this case you can replace the space with underscore.

Examples

A button example:



Session: **ti** | **edm** | **1101m000** | **000** Maintain Engineering Item Revisions

What would you like to add on this session?
 Button Image Position: x Form No. 1 2 3 4 5 6 7

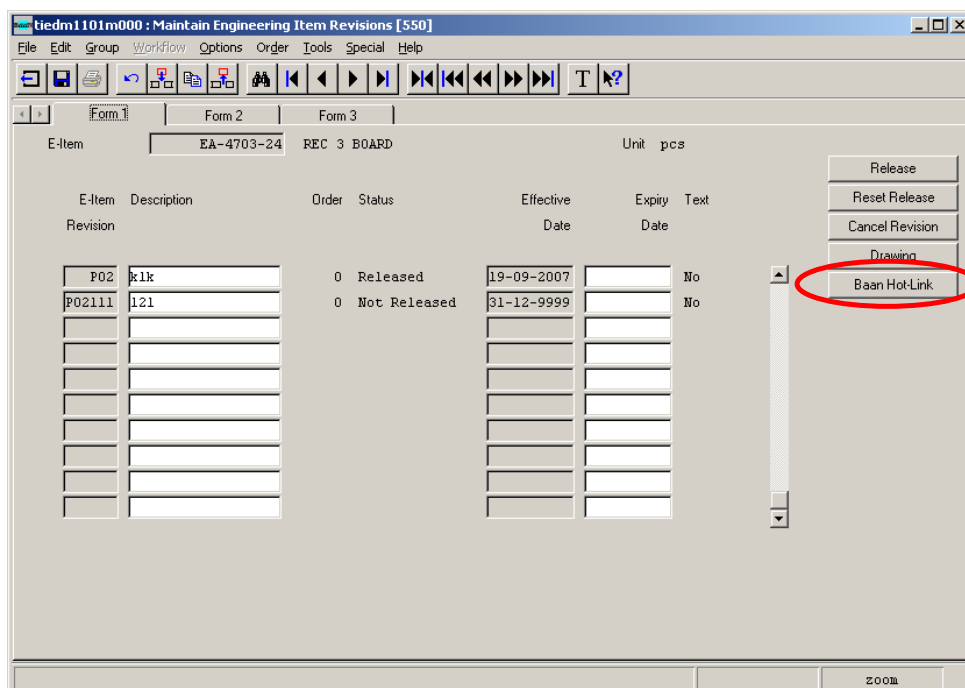
Button settings:
 Button label: Button Size: x

Image settings:
 The folder that contains the images:
 Path:

When an image is clicked zoom to:
 Baan Hot-Link

Image file name (sub folders):
 Part 1: Part 2:
 Part 3: Part 4:
 Part 5: Suffix:

Replace file name characters:
 Replace With



tiedm1101m000 : Maintain Engineering Item Revisions [550]

Form 1 Form 2 Form 3

E-Item: REC 3 BOARD Unit: pcs

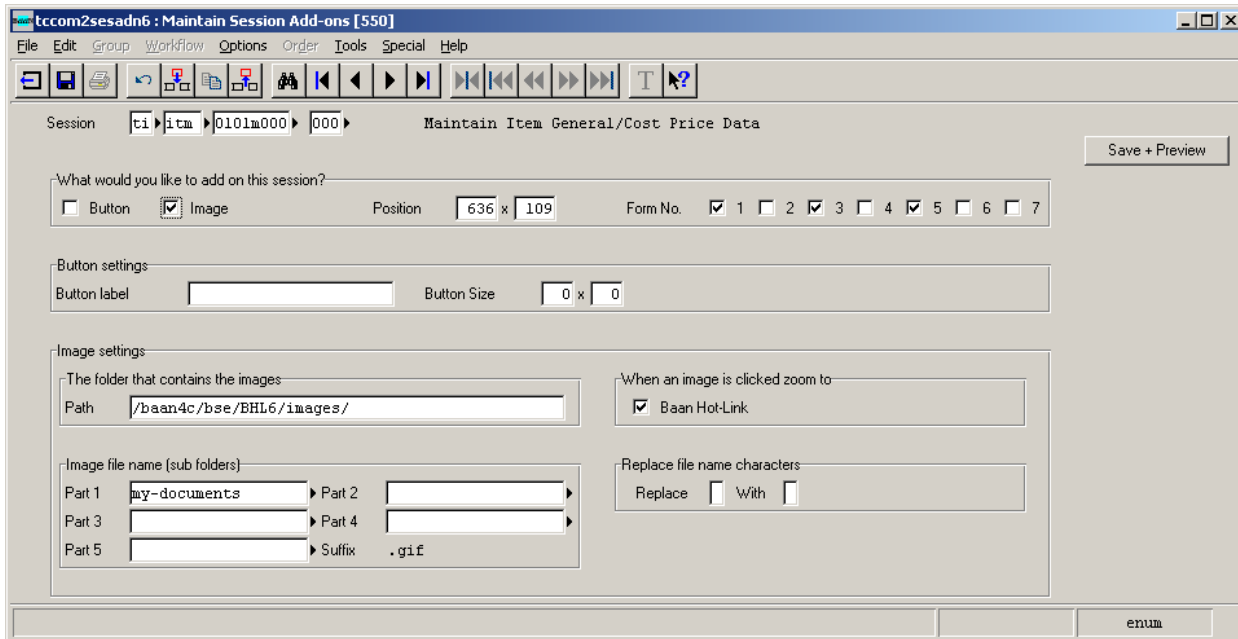
| Revision | E-Item | Description | Order | Status | Effective Date | Expiry Date | Text |
|----------|--------|-------------|-------|--------------|----------------|-------------|------|
| P02 | k1k | | 0 | Released | 19-09-2007 | | No |
| P02111 | l2l | | 0 | Not Released | 31-12-9999 | | No |
| | | | | | | | |
| | | | | | | | |
| | | | | | | | |
| | | | | | | | |
| | | | | | | | |
| | | | | | | | |
| | | | | | | | |
| | | | | | | | |
| | | | | | | | |
| | | | | | | | |
| | | | | | | | |
| | | | | | | | |
| | | | | | | | |

Buttons: Release, Reset Release, Cancel Revision, Drawing, **Baan Hot-Link**

zoom

Adding a clickable Image Example:

For adding a clickable image, you will have to set the path of the image that you want to add on the session. The Baan server should be able to connect to this path directly. You should also check the check box that will activate *bHot-Link*. The image should be of type “gif”.



Session: **ti** | **itm** | **0101m000** | **000** | Maintain Item General/Cost Price Data

What would you like to add on this session?

Button Image Position: 636 x 109 Form No. 1 2 3 4 5 6 7

Button settings

Button label: _____ Button Size: 0 x 0

Image settings

The folder that contains the images

Path:

When an image is clicked zoom to

Baan Hot-Link

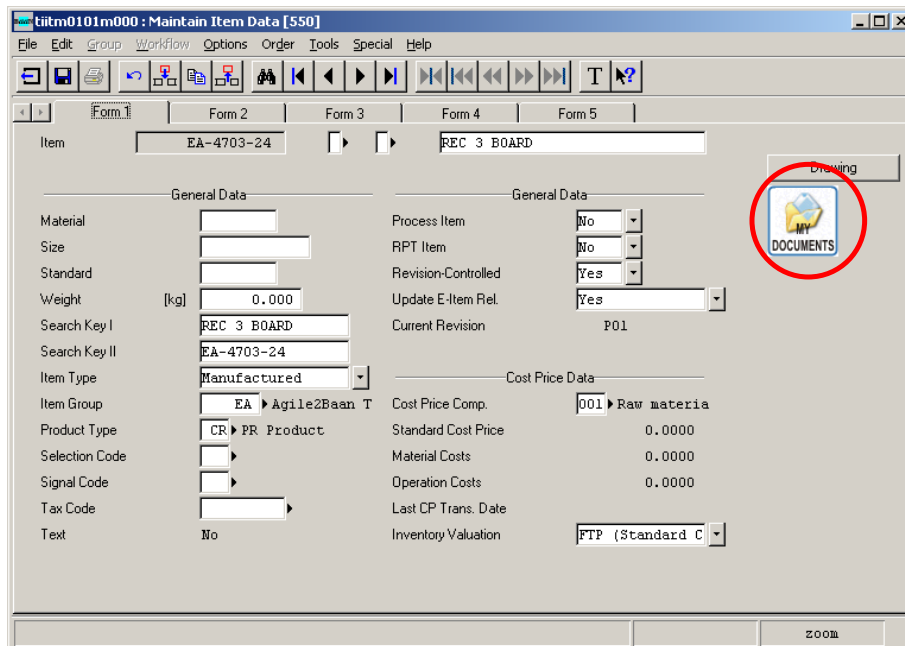
Image file name (sub folders)

Part 1: Part 2: _____
 Part 3: _____ Part 4: _____
 Part 5: _____ Suffix: .gif

Replace file name characters

Replace With

enum



tiitm0101m000 : Maintain Item Data [550]

Item: EA-4703-24 | REC 3 BOARD

General Data

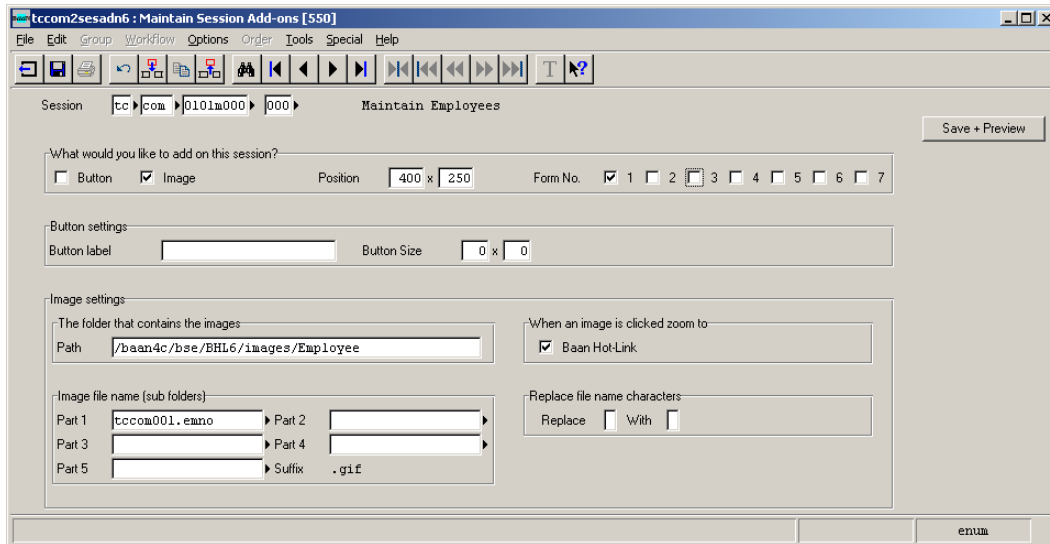
| | | | |
|----------------|-----------------|---------------------|-----------------|
| Material | | Process Item | No |
| Size | | RPT Item | No |
| Standard | | Revision-Controlled | Yes |
| Weight [kg] | 0.000 | Update E-Item Rel. | Yes |
| Search Key I | REC 3 BOARD | Current Revision | P01 |
| Search Key II | EA-4703-24 | | |
| Item Type | Manufactured | | |
| Item Group | EA Agile2Baan T | Cost Price Comp. | 001 Raw materia |
| Product Type | CR PR Product | Standard Cost Price | 0.0000 |
| Selection Code | | Material Costs | 0.0000 |
| Signal Code | | Operation Costs | 0.0000 |
| Tax Code | | Last CP Trans. Date | |
| Text | No | Inventory Valuation | FTP (Standard C |

DOCUMENTS

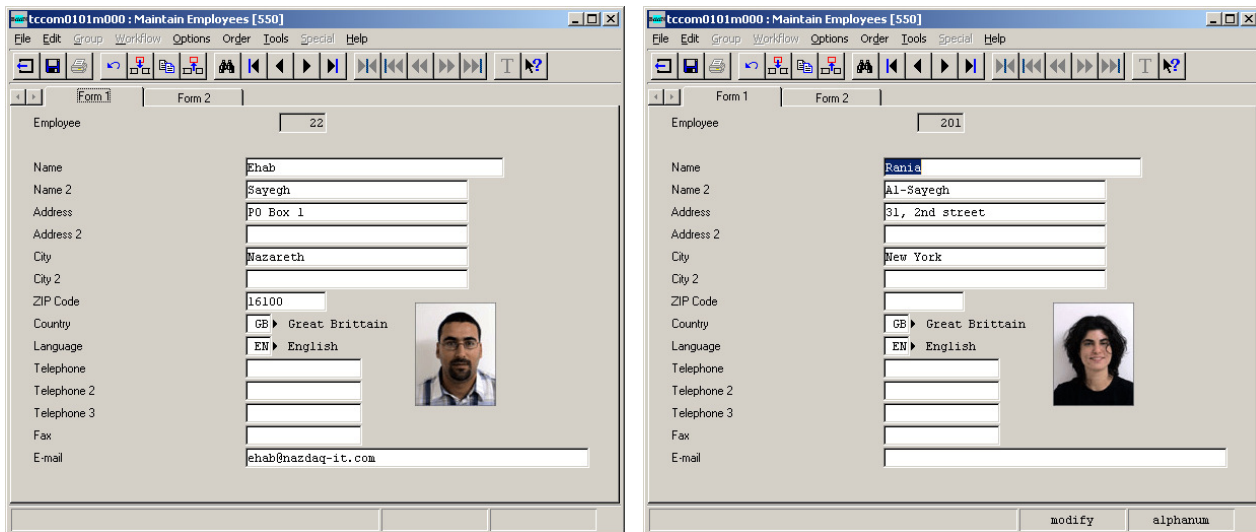
zoom

Adding a Changeable Images Example

You can add an image that relates to the record you are standing on. In order do that, you will have to prepare a folder with all your images. The name of the image should be taken from one or more session fields (tccom001.emno for example). In the following example the image names are 201.gif & 22.gif.



When you browse through your session the image will automatically change.



You can also define an image to appear if there is no image for the item. The file should be named “nogif.gif” and it should be in the same directory were all the other gif files are.

Those images are able to open *bHot-Link* window if you click on them. In order to do that you need to check the zoom to *bHot-Link* option.

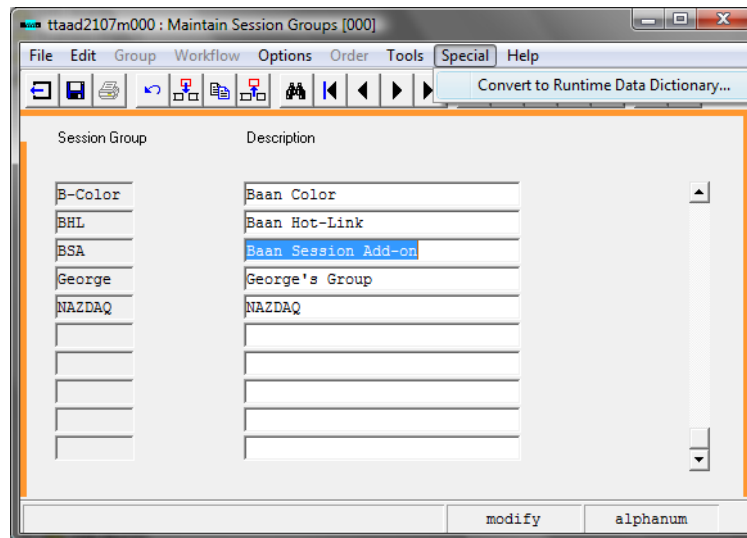
Setting up BSA (Baan Session Add-ons)

The background process that is responsible for adding the buttons/images is tccom2bsa7. This session should be activated at the BW startup. The following will explain how to add a session to the startup in two ways.

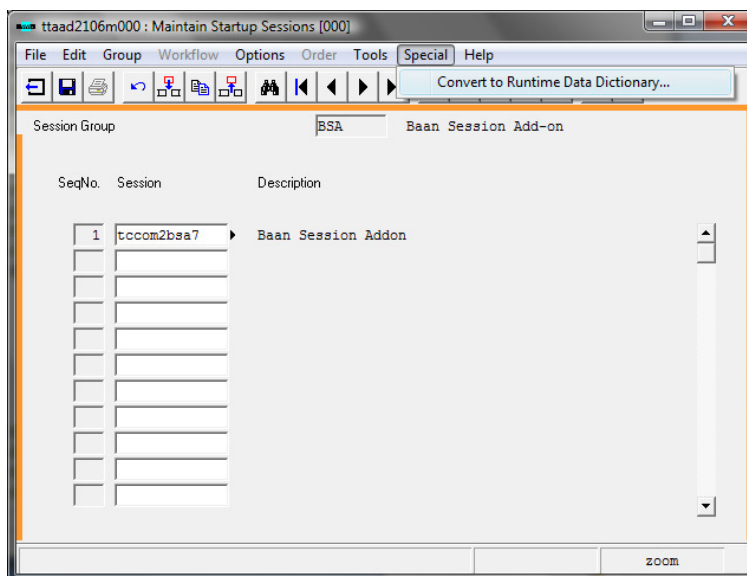
- 1) Through user's default startup sessions
- 2) Through BMS Mask Data (ttadv4188m000)

Adding tccom2bsa7 to the startup user sessions:

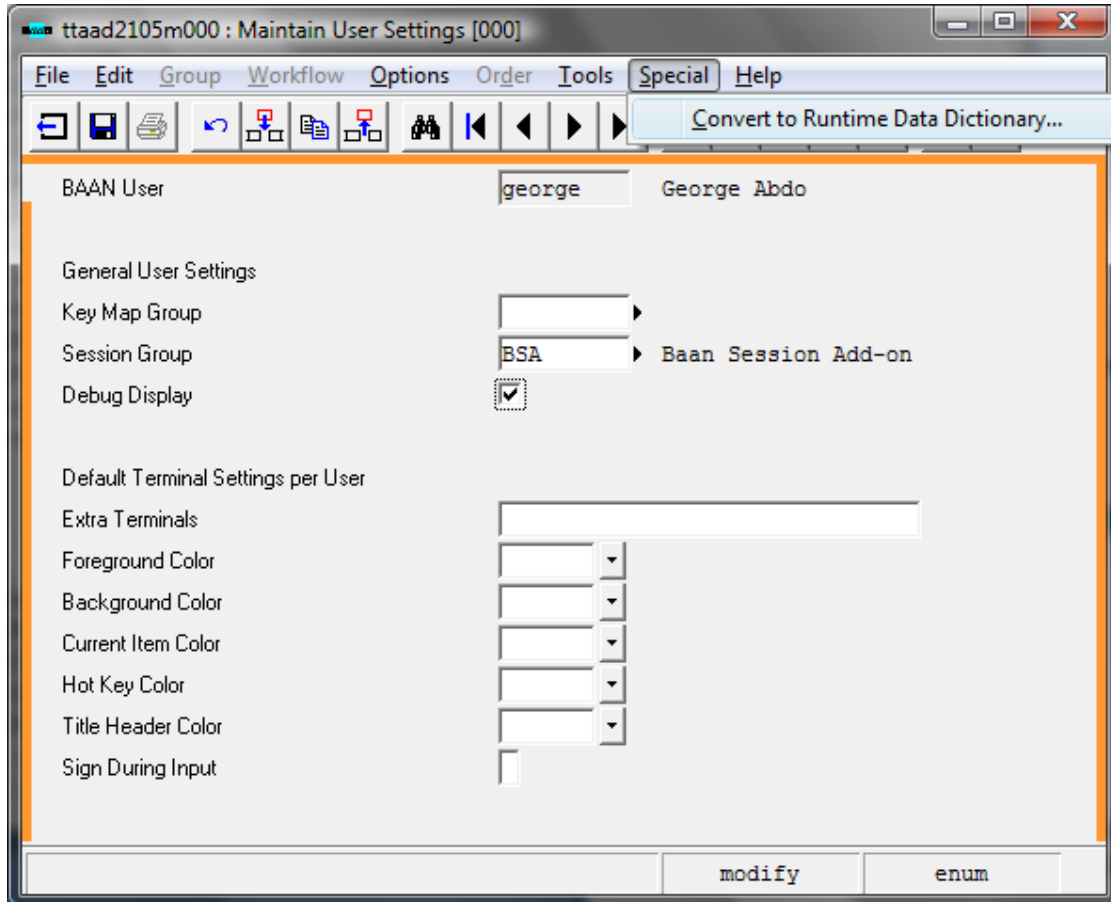
- 1) Create a new session group (if you don't have one) using ttaad2107m000 (BSA for Example)
When done, convert to Runtime Data Dictionary. If your users already have a group, you only need to add tccom2bsa7 to their group.



- 2) Insert tccom2bsa7 to the newly made BHL group (or any existing group) using ttaad2106m000
When done, convert to Runtime Data Dictionary (if you are upgrading remove the old entry)



- 3) Set the group name in the user settings using ttaad2105m000
When done, convert to Runtime Data Dictionary

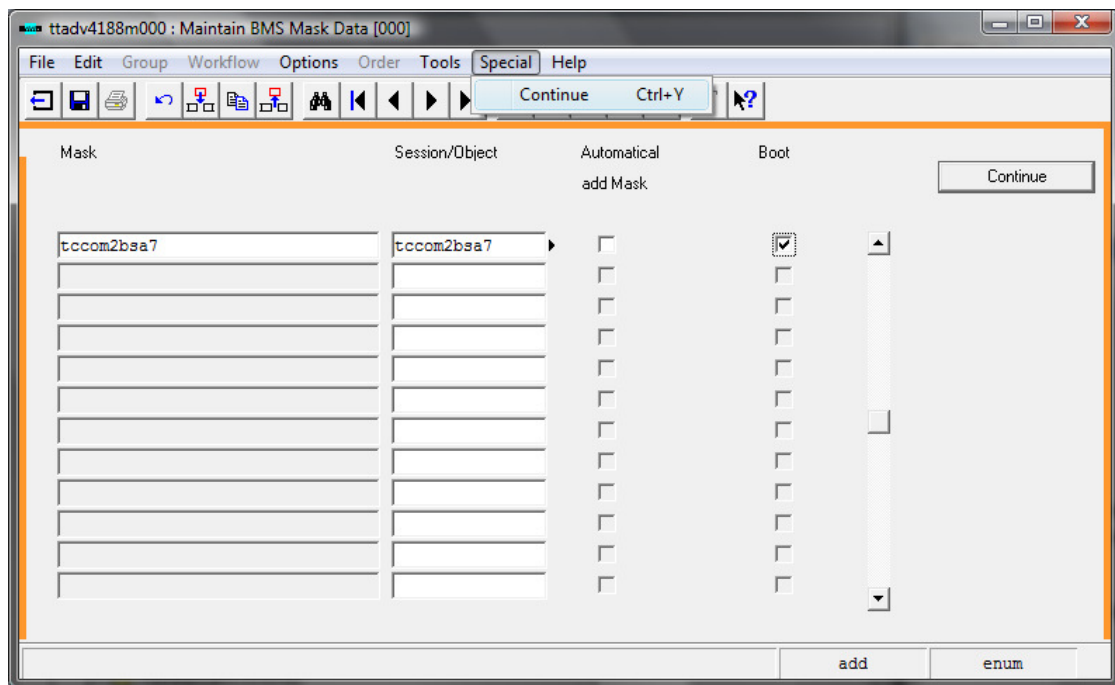


Adding tccom2bsa7 to the startup baan sessions through BMS Mask Data:

Maintain BMS Mask session can be used to define startup processes for all users. Caution is needed if you choose this way since it will affect all users.

Here are the steps to run tccom2bsa7 for all your Baan users:

- a) Insert tccom2bsa7 to
- b) Check the boot check box
- c) Save
- d) Click on Continue

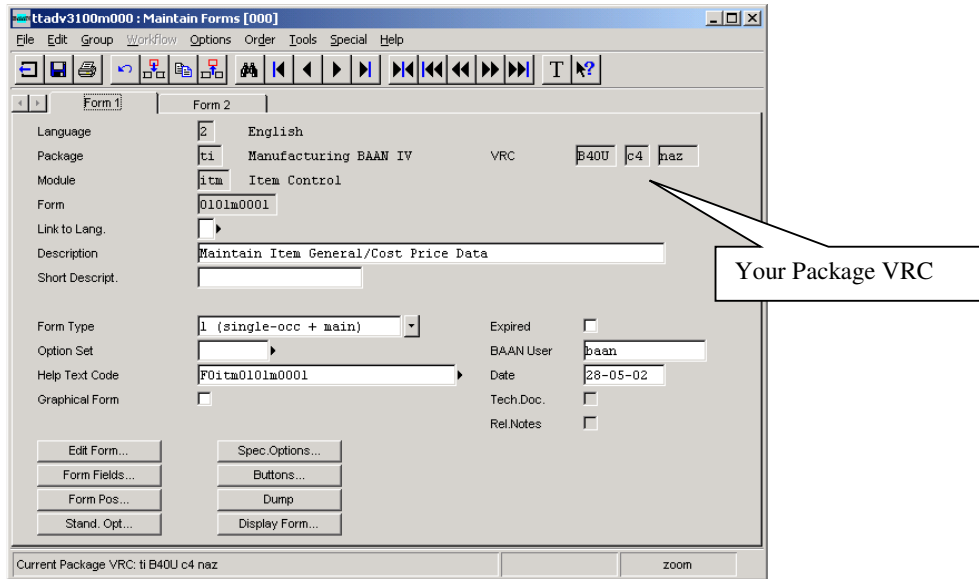


This will make tccom2bsa7 work for all the users. If you want to exclude some users you can write their baan user names in a file and save it under \$BSE/BHC7/settings/adm as “bhlusers.dat”

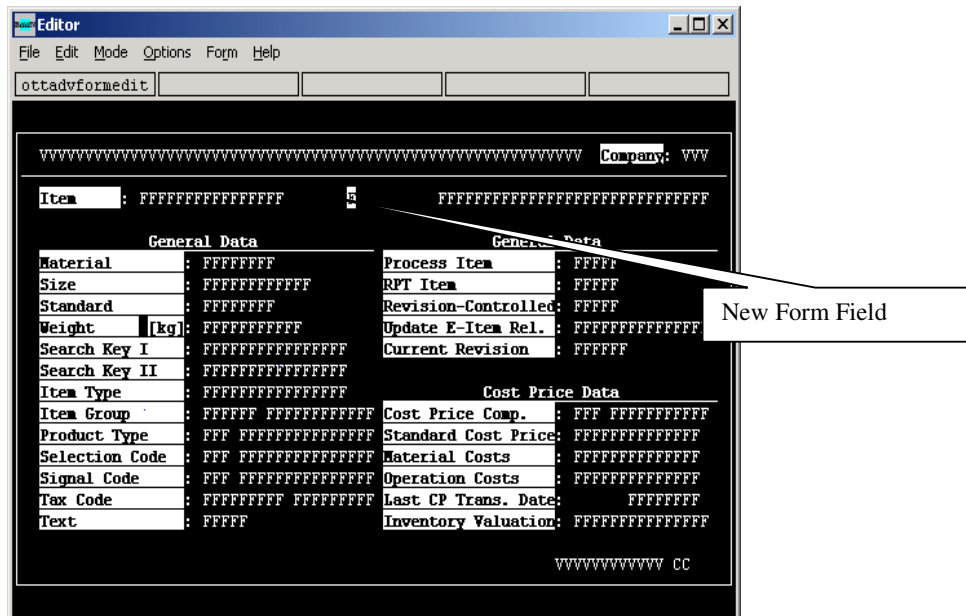
Adding a zoom field to the session's form

The *bHot-Link* can be activated from any Baan Form. Basic knowledge of Baan Tools is needed.

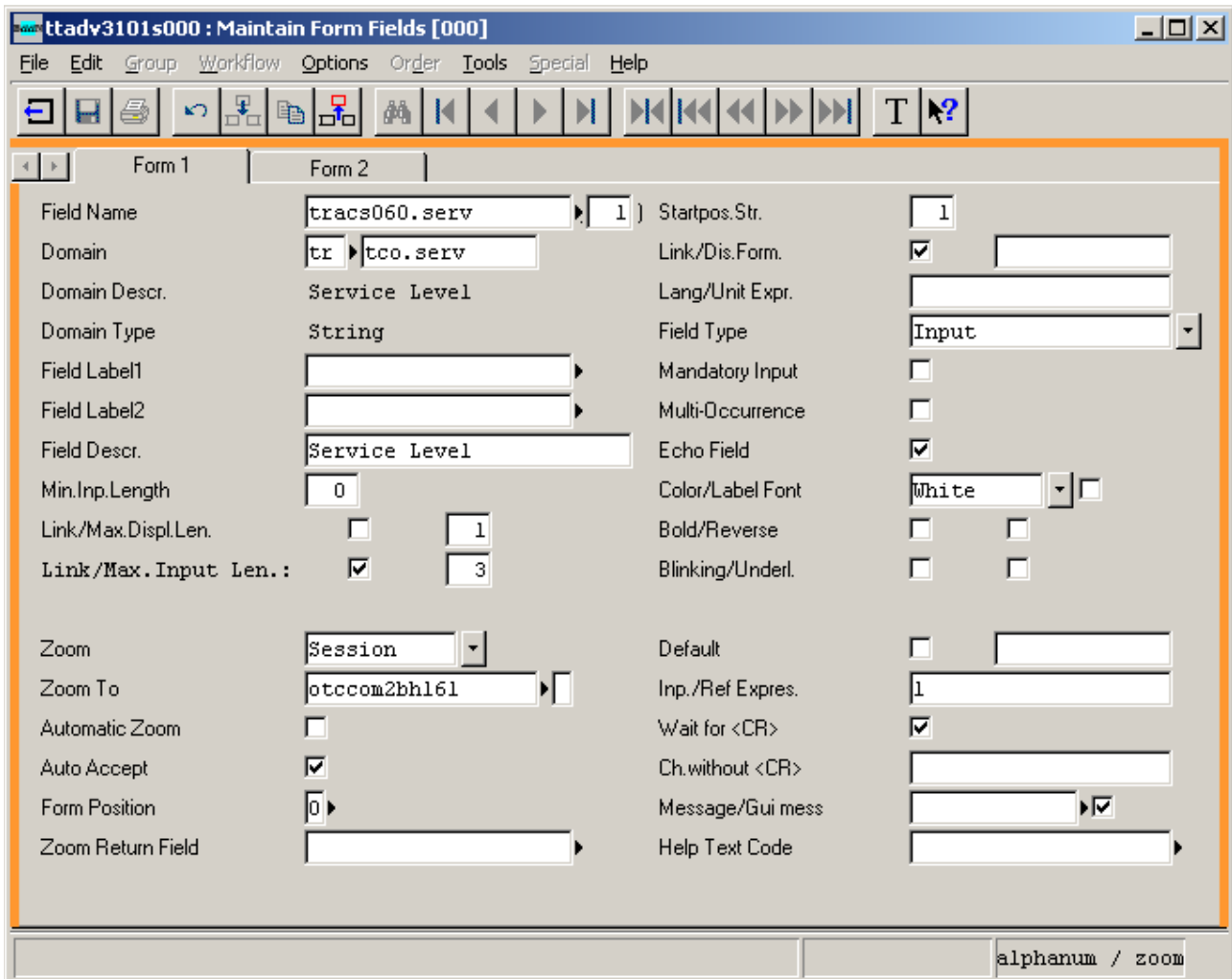
1. Maintain the Baan form that you wish to link. Copy the form to current package VRC.



2. Edit form and add a form field in the location you wish



3. Maintain the form Fields in the following way:



The screenshot shows a software window titled "ttadv3101s000 : Maintain Form Fields [000]". The window has a menu bar (File, Edit, Group, Workflow, Options, Order, Tools, Special, Help) and a toolbar with various icons. Below the toolbar, there are tabs for "Form 1" and "Form 2". The main area contains a grid of configuration options for a field:

| | | | | |
|----------------------|-------------------------------------|----------|------------------|---|
| Field Name | tracs060.serv | 1 | Startpos.Str. | 1 |
| Domain | tr | tco.serv | Link/Dis.For. | <input checked="" type="checkbox"/> |
| Domain Descr. | Service Level | | Lang/Unit Expr. | |
| Domain Type | String | | Field Type | Input |
| Field Label1 | | | Mandatory Input | <input type="checkbox"/> |
| Field Label2 | | | Multi-Occurrence | <input type="checkbox"/> |
| Field Descr. | Service Level | | Echo Field | <input checked="" type="checkbox"/> |
| Min.Inp.Length | 0 | | Color/Label Font | White |
| Link/Max.Displ.Len. | <input type="checkbox"/> | 1 | Bold/Reverse | <input type="checkbox"/> <input type="checkbox"/> |
| Link/Max.Input Len.: | <input checked="" type="checkbox"/> | 3 | Blinking/Underl. | <input type="checkbox"/> <input type="checkbox"/> |
| Zoom | Session | | Default | <input type="checkbox"/> |
| Zoom To | otccom2bh161 | | Inp./Ref Expr. | 1 |
| Automatic Zoom | <input type="checkbox"/> | | Wait for <CR> | <input checked="" type="checkbox"/> |
| Auto Accept | <input checked="" type="checkbox"/> | | Ch.without <CR> | |
| Form Position | 0 | | Message/Gui mess | <input checked="" type="checkbox"/> |
| Zoom Return Field | | | Help Text Code | |

At the bottom right of the window, there is a status bar with the text "alphanumeric / zoom".

Field Name

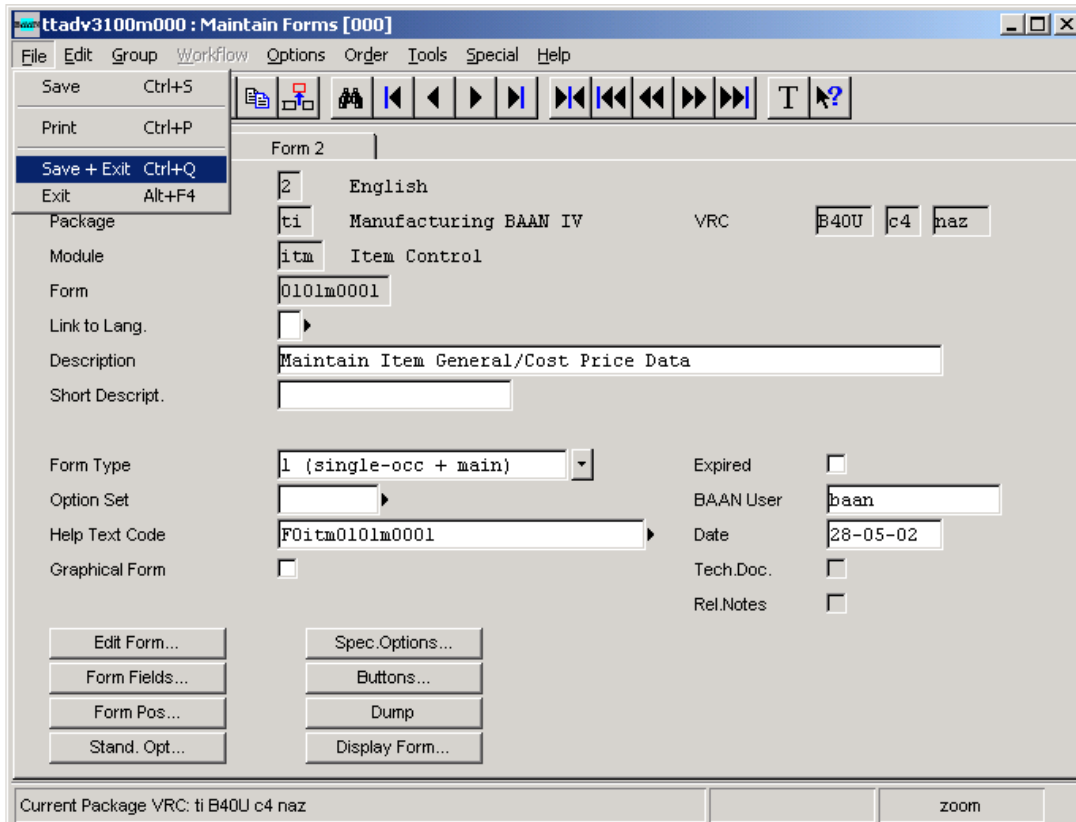
Choose a field name from an empty table. In the example given, table tracs060 (Display Zone Definition by City) is from the Transportation Module and this table is empty. The field serv (Service Level) is a text-based field and does not have a reference. This is why it was chosen.

There are many other fields that can be used in this. Caution is required. Using the wrong field may result in improper use of Maintain Item Data. Global Variables like logname\$ can be used if they are not used elsewhere.

Zoom to

Object **otccom2bh17** opens a multi-option form for linking with four different files. In case you have one link only, BHL will open it without showing you the intermediate form.

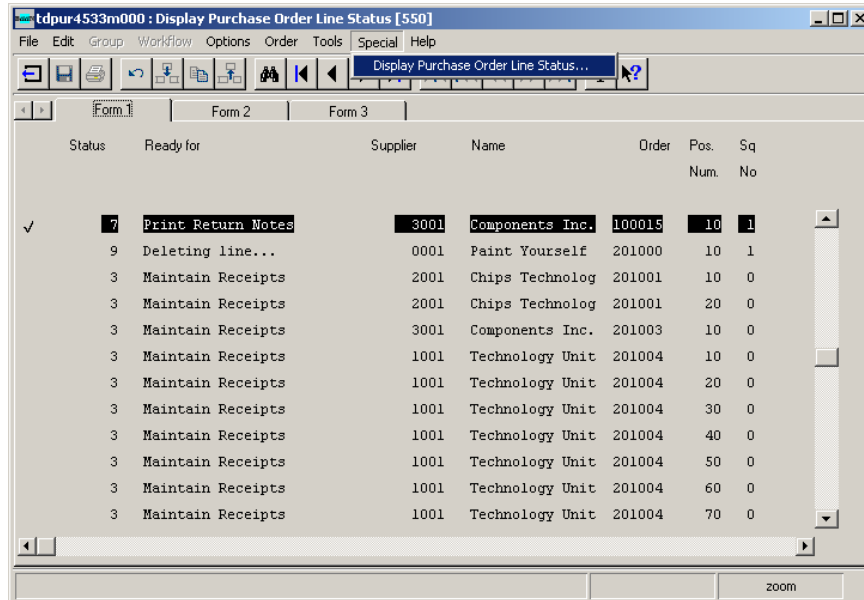
4. After the form field is added, dump the form, save and exist



| Field | Value |
|-----------------|--|
| Language | English |
| Package | ti Manufacturing BAAN IV VRC B40U c4 naz |
| Module | itm Item Control |
| Form | 0101m0001 |
| Link to Lang. | |
| Description | Maintain Item General/Cost Price Data |
| Short Descript. | |
| Form Type | 1 (single-occ + main) |
| Option Set | |
| Help Text Code | F0itm0101m0001 |
| Graphical Form | <input type="checkbox"/> |
| Expired | <input type="checkbox"/> |
| BAAN User | baan |
| Date | 28-05-02 |
| Tech.Doc. | <input type="checkbox"/> |
| Rel.Notes | <input type="checkbox"/> |

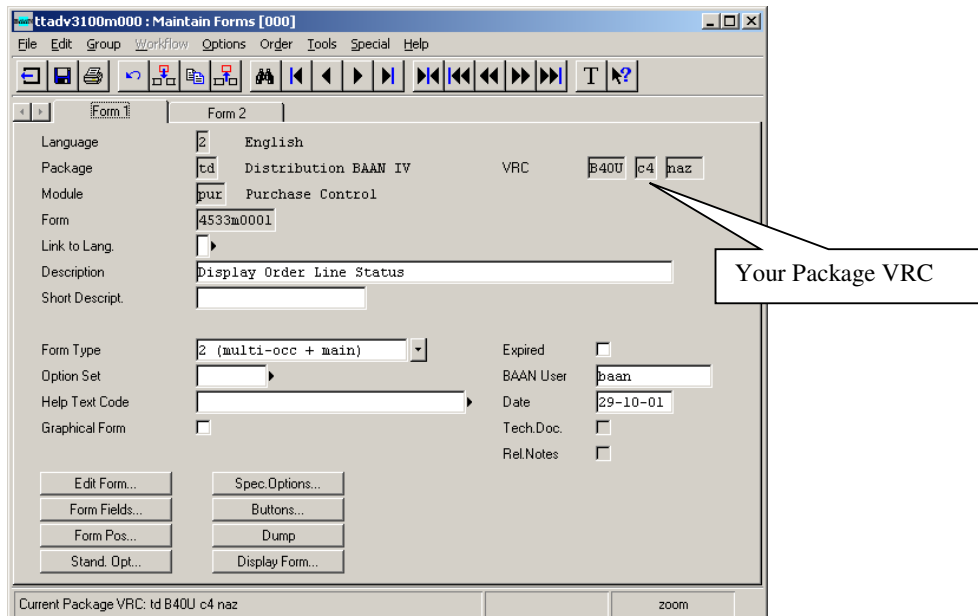
Current Package VRC: ti B40U c4 naz zoom

Adding Hot Link to the session's Special Menu



| Status | Ready for | Supplier | Name | Order Num. | Pos. | Sq No |
|--------|--------------------|----------|-----------------|------------|------|-------|
| ✓ 7 | Print Return Notes | 3001 | Components Inc. | 100015 | 10 | 1 |
| 9 | Deleting line... | 0001 | Paint Yourself | 201000 | 10 | 1 |
| 3 | Maintain Receipts | 2001 | Chips Technolog | 201001 | 10 | 0 |
| 3 | Maintain Receipts | 2001 | Chips Technolog | 201001 | 20 | 0 |
| 3 | Maintain Receipts | 3001 | Components Inc. | 201003 | 10 | 0 |
| 3 | Maintain Receipts | 1001 | Technology Unit | 201004 | 10 | 0 |
| 3 | Maintain Receipts | 1001 | Technology Unit | 201004 | 20 | 0 |
| 3 | Maintain Receipts | 1001 | Technology Unit | 201004 | 30 | 0 |
| 3 | Maintain Receipts | 1001 | Technology Unit | 201004 | 40 | 0 |
| 3 | Maintain Receipts | 1001 | Technology Unit | 201004 | 50 | 0 |
| 3 | Maintain Receipts | 1001 | Technology Unit | 201004 | 60 | 0 |
| 3 | Maintain Receipts | 1001 | Technology Unit | 201004 | 70 | 0 |

1. Maintain the Baan form that you wish to link. Copy the form to current package VRC.



ttadv3100m000 : Maintain Forms [000]

File Edit Group Workflow Options Order Tools Special Help

Form 1 Form 2

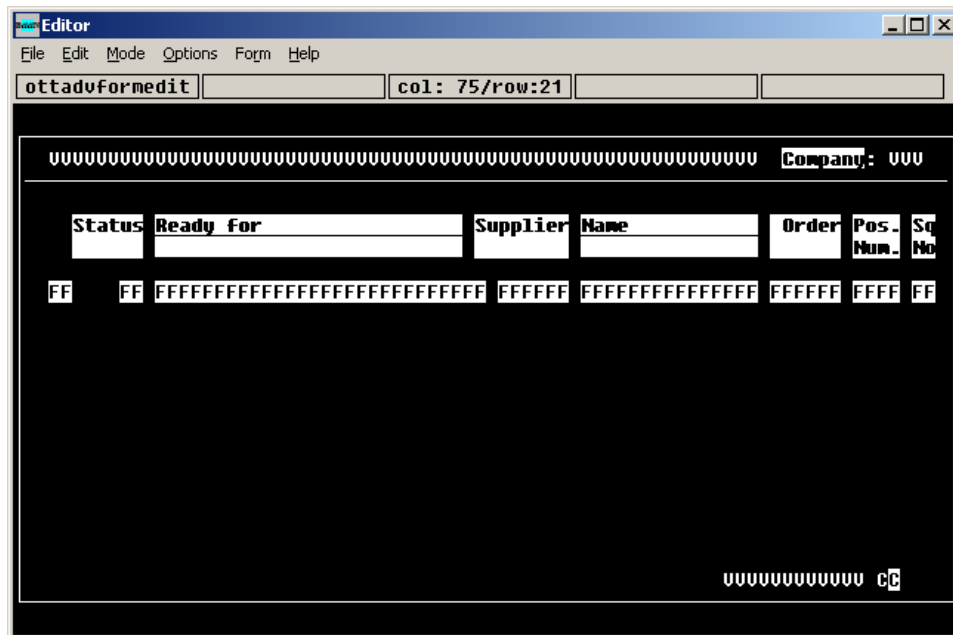
Language: 2 English
 Package: td Distribution BAAN IV VRC: B40U c4 naz
 Module: pur Purchase Control
 Form: 4533m0001
 Link to Lang.:
 Description: Display Order Line Status
 Short Descript.:
 Form Type: 2 (multi-occ + main)
 Option Set:
 Help Text Code:
 Graphical Form:

Expired:
 BAAN User: baan
 Date: 29-10-01
 Tech.Doc:
 Rel.Notes:

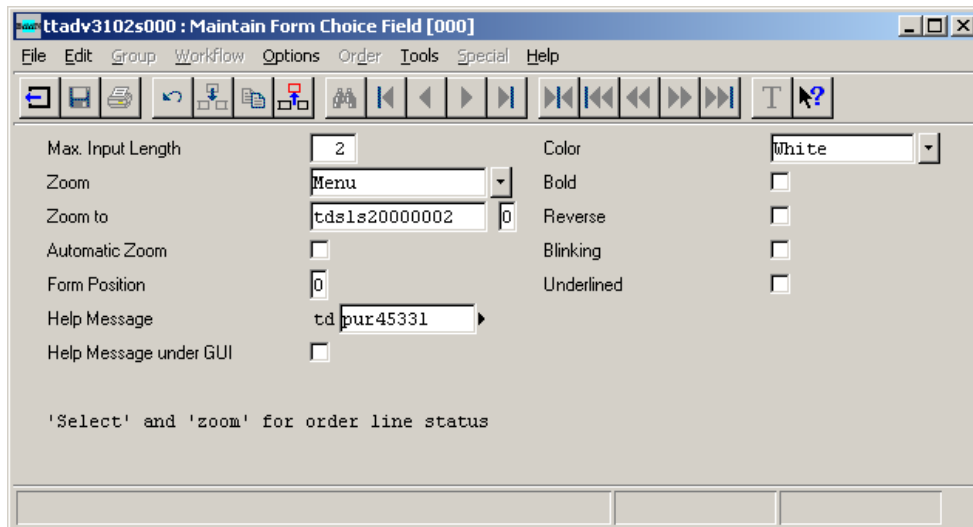
Buttons: Edit Form..., Spec.Options..., Form Fields..., Buttons..., Form Pos..., Dump, Stand. Opt..., Display Form...

Current Package VRC: td B40U c4 naz

2. Edit form



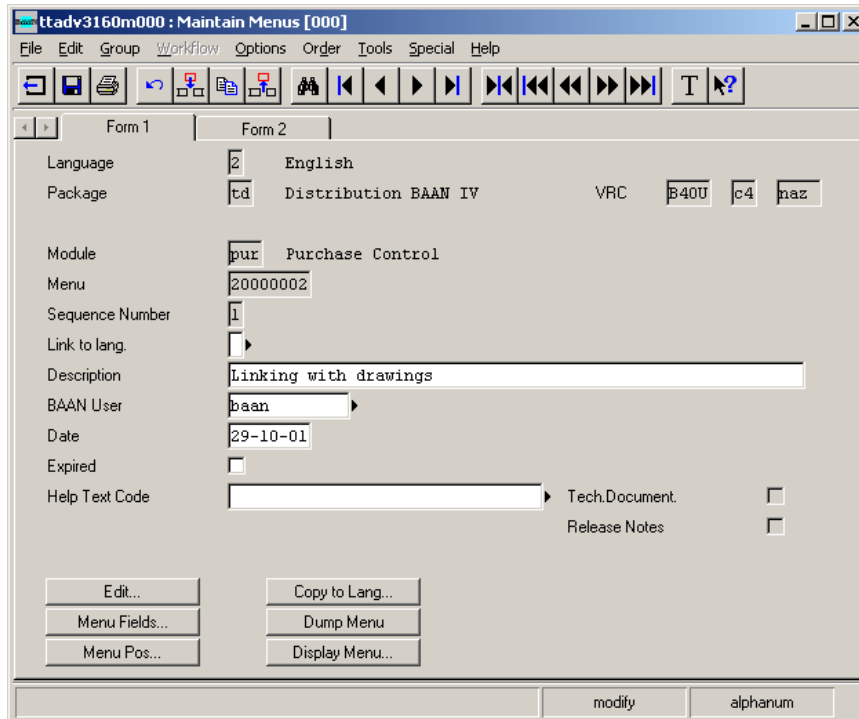
3. Change the Zoom session to a menu that we will be created in the next step.



Save and Exit.
Dump Form.

Adding *bHot-Link* to a session's sub-menu

Go to Maintain Menu's, create a new menu



ttadv3160m000 : Maintain Menus [000]

File Edit Group Workflow Options Order Tools Special Help

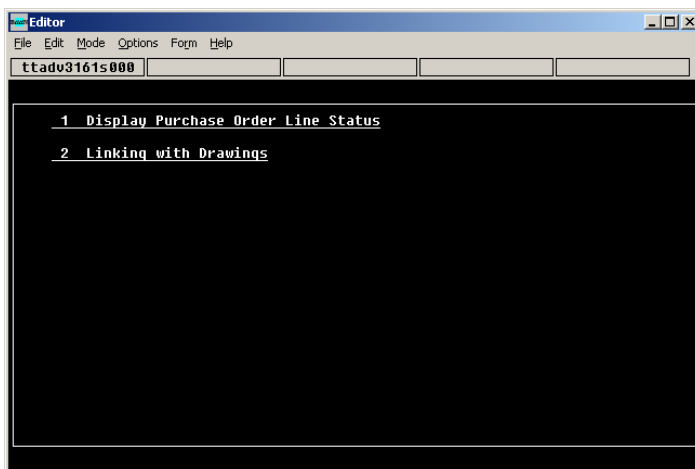
Form 1 Form 2

Language: 2 English
 Package: td Distribution BAAN IV VRC: B40U c4 maz
 Module: pur Purchase Control
 Menu: 20000002
 Sequence Number: 1
 Link to lang.: ▶
 Description: Linking with drawings
 BAAN User: baan ▶
 Date: 29-10-01
 Expired:
 Help Text Code: ▶ Tech.Document.
 Release Notes

Buttons: Edit... Copy to Lang... Menu Fields... Dump Menu... Menu Pos... Display Menu...

modify alphanum

4. Edit in the following way:



Editor

File Edit Mode Options Form Help

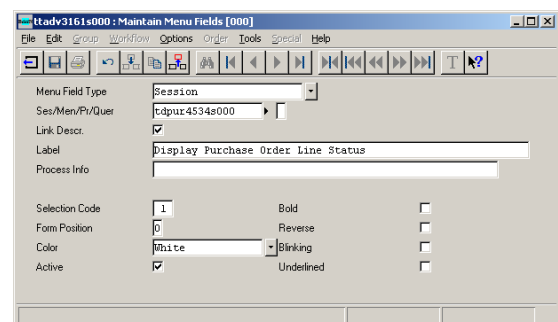
ttadv3161s000

```

1 Display Purchase Order Line Status
2 Linking with Drawings

```

Save and Exit.
Dump Menu.

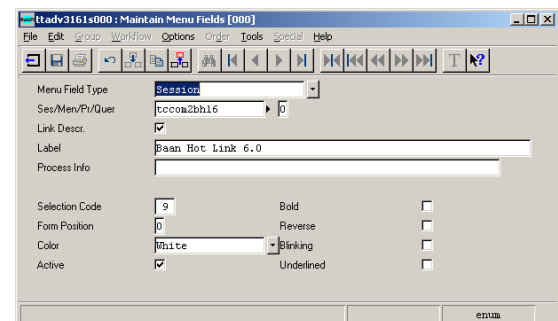


ttadv3161s000 : Maintain Menu Fields [000]

File Edit Group Workflow Options Order Tools Special Help

Menu Field Type: Session
 Ses/Men/PV/Quer: tdpur4534s000 ▶
 Link Descr.:
 Label: Display Purchase Order Line Status
 Process Info:

Selection Code: 1 Bold
 Form Position: 0 Reverse
 Color: White Blinking
 Active: Underlined



ttadv3161s000 : Maintain Menu Fields [000]

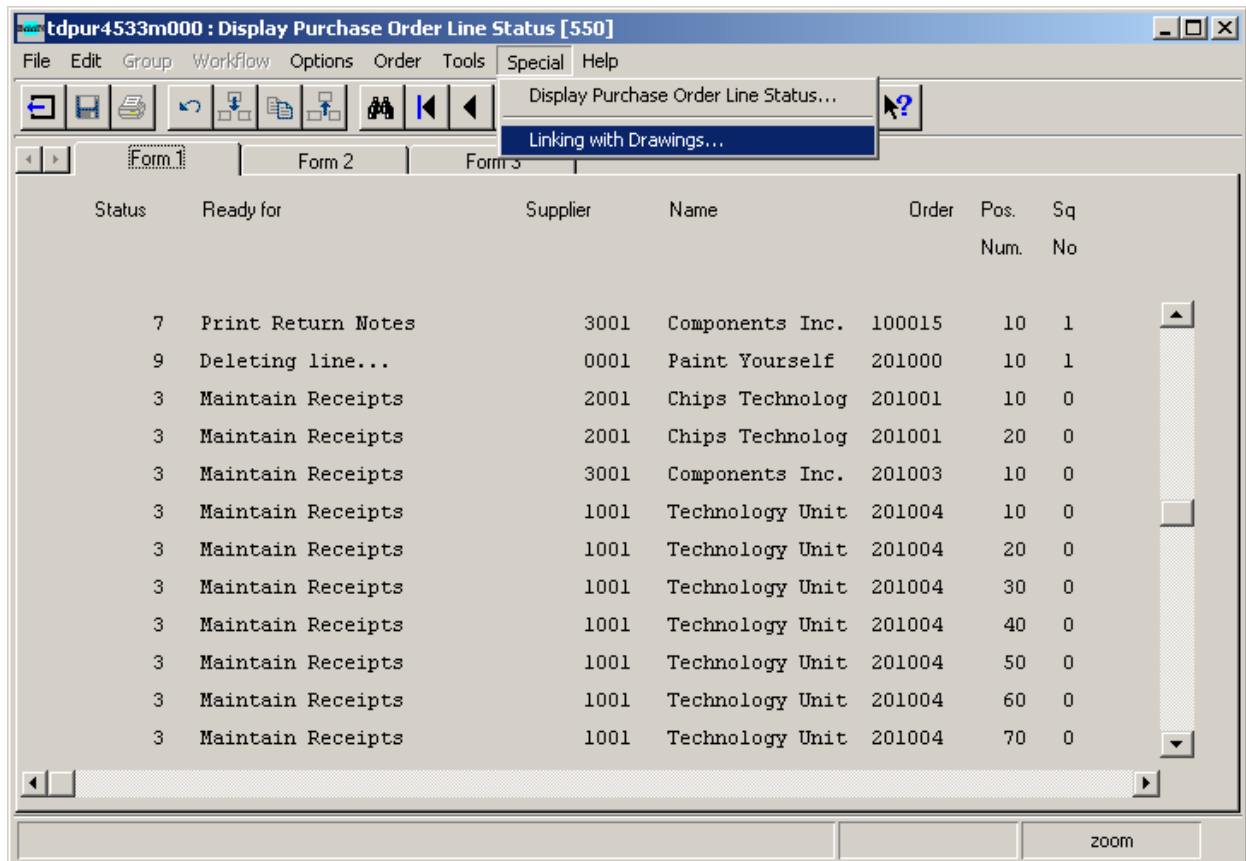
File Edit Group Workflow Options Order Tools Special Help

Menu Field Type: Session
 Ses/Men/PV/Quer: tccoa2bh16 ▶
 Link Descr.:
 Label: baan Hot Link 6.0
 Process Info:

Selection Code: 9 Bold
 Form Position: 0 Reverse
 Color: White Blinking
 Active: Underlined

enum

bHot-Link is added now to a display session and need to be defined in tcom2bhmap7 session



| Status | Ready for | Supplier | Name | Order | Pos. Num. | Sq No |
|--------|--------------------|----------|-----------------|--------|-----------|-------|
| 7 | Print Return Notes | 3001 | Components Inc. | 100015 | 10 | 1 |
| 9 | Deleting line... | 0001 | Paint Yourself | 201000 | 10 | 1 |
| 3 | Maintain Receipts | 2001 | Chips Technolog | 201001 | 10 | 0 |
| 3 | Maintain Receipts | 2001 | Chips Technolog | 201001 | 20 | 0 |
| 3 | Maintain Receipts | 3001 | Components Inc. | 201003 | 10 | 0 |
| 3 | Maintain Receipts | 1001 | Technology Unit | 201004 | 10 | 0 |
| 3 | Maintain Receipts | 1001 | Technology Unit | 201004 | 20 | 0 |
| 3 | Maintain Receipts | 1001 | Technology Unit | 201004 | 30 | 0 |
| 3 | Maintain Receipts | 1001 | Technology Unit | 201004 | 40 | 0 |
| 3 | Maintain Receipts | 1001 | Technology Unit | 201004 | 50 | 0 |
| 3 | Maintain Receipts | 1001 | Technology Unit | 201004 | 60 | 0 |
| 3 | Maintain Receipts | 1001 | Technology Unit | 201004 | 70 | 0 |

Adding a Hot Link to the session through code

This should be done by a Baan tools programmer.

The following is the line of code that activates bHot-Link:

```
zoom.to$ ("otccom2bh17", Z.SESSION, "", "", 0)
```

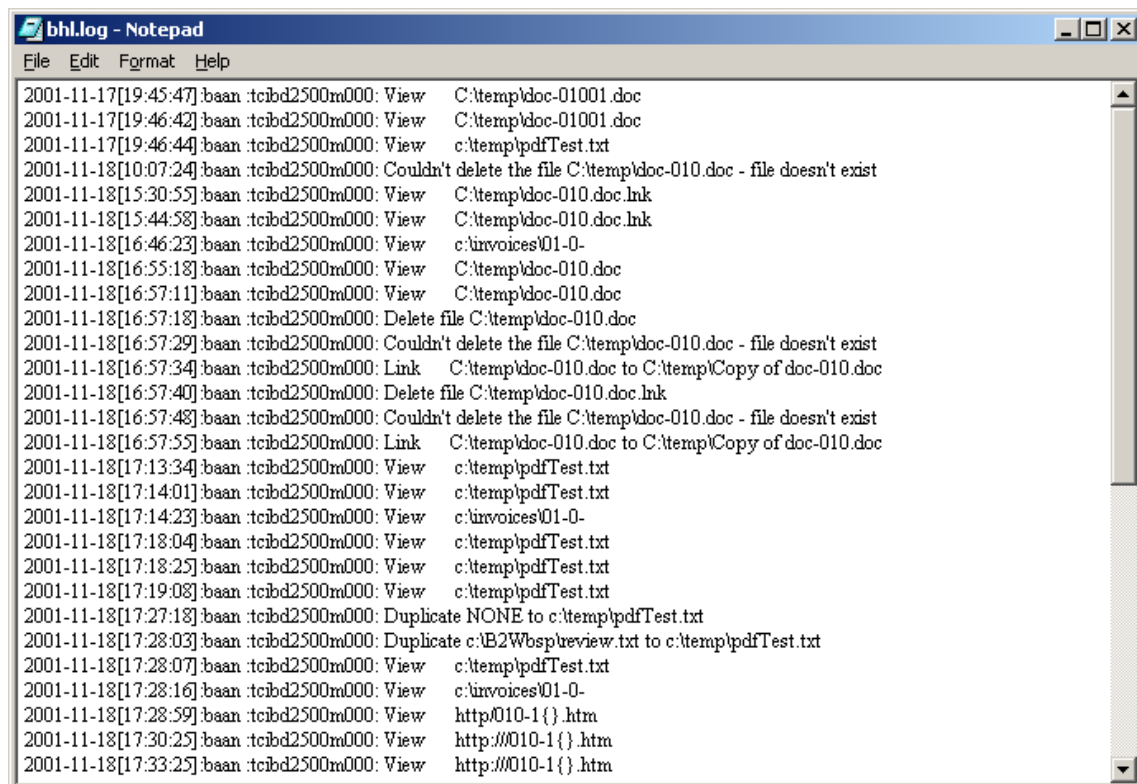
You can add it anywhere in the code. Usually it is added in a new menu option or button (user choice) section.

System Issues

This section will talk about fine tuning *bHot-Link* and other system issues.

bHot-Link Log

The log file, <bhl.log>, for *bHot-Link* is stored under \$BSE/BHL7/settings/adm



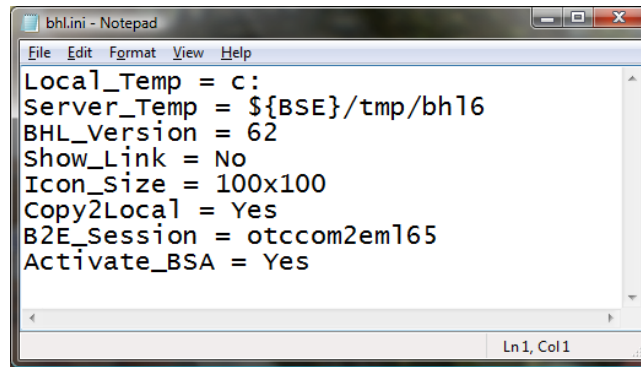
```

bhl.log - Notepad
File Edit Format Help
2001-11-17[19:45:47]baan :tcibd2500m000: View C:\temp\doc-01001.doc
2001-11-17[19:46:42]baan :tcibd2500m000: View C:\temp\doc-01001.doc
2001-11-17[19:46:44]baan :tcibd2500m000: View c:\temp\pdfTest.txt
2001-11-18[10:07:24]baan :tcibd2500m000: Couldn't delete the file C:\temp\doc-010.doc - file doesn't exist
2001-11-18[15:30:55]baan :tcibd2500m000: View C:\temp\doc-010.doc.lnk
2001-11-18[15:44:58]baan :tcibd2500m000: View C:\temp\doc-010.doc.lnk
2001-11-18[16:46:23]baan :tcibd2500m000: View c:\invoices\01-0-
2001-11-18[16:55:18]baan :tcibd2500m000: View C:\temp\doc-010.doc
2001-11-18[16:57:11]baan :tcibd2500m000: View C:\temp\doc-010.doc
2001-11-18[16:57:18]baan :tcibd2500m000: Delete file C:\temp\doc-010.doc
2001-11-18[16:57:29]baan :tcibd2500m000: Couldn't delete the file C:\temp\doc-010.doc - file doesn't exist
2001-11-18[16:57:34]baan :tcibd2500m000: Link C:\temp\doc-010.doc to C:\temp\Copy of doc-010.doc
2001-11-18[16:57:40]baan :tcibd2500m000: Delete file C:\temp\doc-010.doc.lnk
2001-11-18[16:57:48]baan :tcibd2500m000: Couldn't delete the file C:\temp\doc-010.doc - file doesn't exist
2001-11-18[16:57:55]baan :tcibd2500m000: Link C:\temp\doc-010.doc to C:\temp\Copy of doc-010.doc
2001-11-18[17:13:34]baan :tcibd2500m000: View c:\temp\pdfTest.txt
2001-11-18[17:14:01]baan :tcibd2500m000: View c:\temp\pdfTest.txt
2001-11-18[17:14:23]baan :tcibd2500m000: View c:\invoices\01-0-
2001-11-18[17:18:04]baan :tcibd2500m000: View c:\temp\pdfTest.txt
2001-11-18[17:18:25]baan :tcibd2500m000: View c:\temp\pdfTest.txt
2001-11-18[17:19:08]baan :tcibd2500m000: View c:\temp\pdfTest.txt
2001-11-18[17:27:18]baan :tcibd2500m000: Duplicate NONE to c:\temp\pdfTest.txt
2001-11-18[17:28:03]baan :tcibd2500m000: Duplicate c:\B2Wbsp\review.txt to c:\temp\pdfTest.txt
2001-11-18[17:28:07]baan :tcibd2500m000: View c:\temp\pdfTest.txt
2001-11-18[17:28:16]baan :tcibd2500m000: View c:\invoices\01-0-
2001-11-18[17:28:59]baan :tcibd2500m000: View http://010-1 {} .htm
2001-11-18[17:30:25]baan :tcibd2500m000: View http://010-1 {} .htm
2001-11-18[17:33:25]baan :tcibd2500m000: View http://010-1 {} .htm

```

***bHot-Link* parameters - bhl.ini file**

The bhl.ini saved in \$BSE/BHC7/settings/adm contains **default** parameters for better configuring of the *bHot-Link* product.



```
bhl.ini - Notepad
File Edit Format View Help
Local_Temp = c:
Server_Temp = ${BSE}/tmp/bh16
BHL_Version = 62
Show_Link = No
Icon_Size = 100x100
Copy2Local = Yes
B2E_Session = otccom2em165
Activate_BSA = Yes
Ln 1, Col 1
```

Local_Temp

bHot-Link copies files to the user's C: drive and create directories by the name b2e<user name> (For example, b2esaleem for user saleem). If the PC you are using does not have access to the C Drive (Like in case you are using MetaFrame or Citrix), or if you wish to locate your temp files in a different location, change this variable.

Server_Temp

bHot-Link uses \$BSE/tmp as its default location for creating temporary files. This directory can be changed by changing this variable.

Show_Link

If Show_Link = Yes, it marks the links with (V) if the link was found.

Icon_Size

Put the <width>x<height> of a *bHot-Link* button. The icons that you choose in tccom2bhmap7 should have the same size (or less). All icons must be in **gif** format. Save all icons under **\$BSE/BHC7/images**. You can find three examples in the package.

Copy2Local

bHot-Link copies different exe programs to Local_Temp every time *bHot-Link* is used. You can decide to have these files deleted every time the device finishes processing the files. For *bHot-Link* installations with many slow machines, it is recommended to change this variable to No.

B2E_Session

The name of the current B2Email session/object (only works from v. 5.0 and higher)

BHL_Version

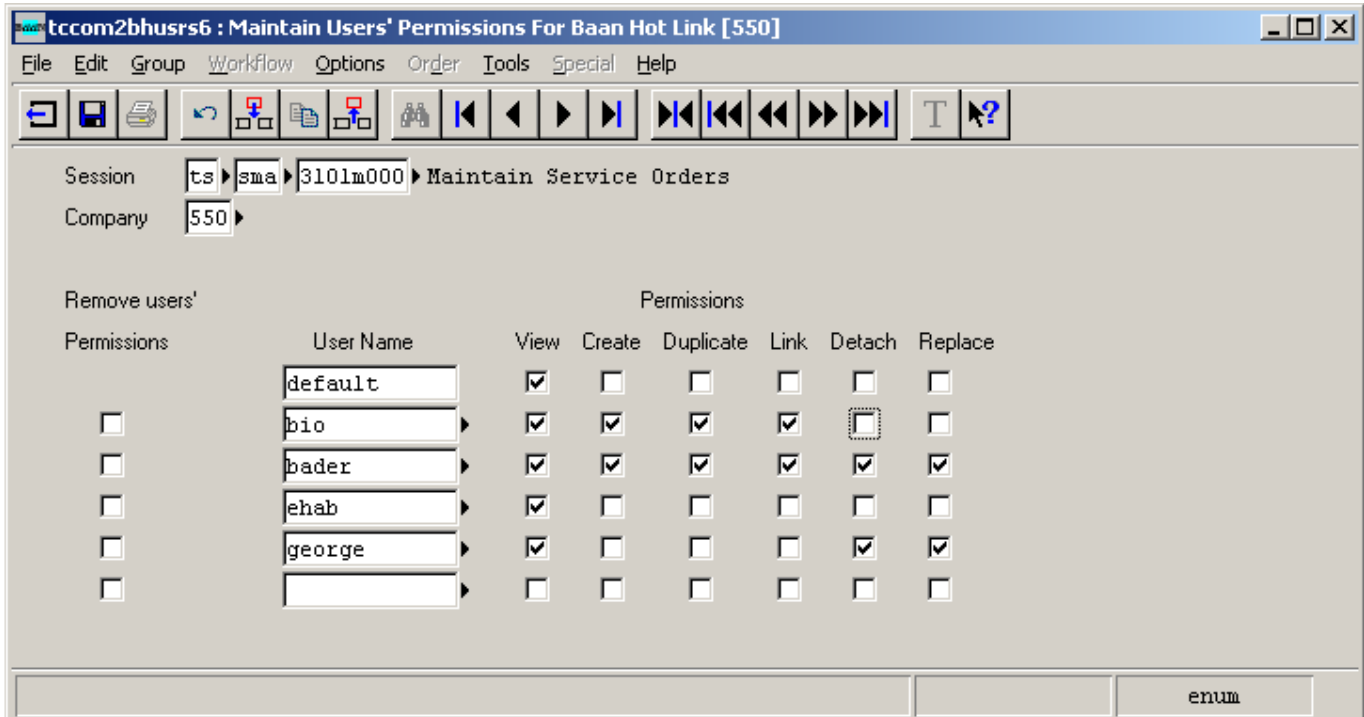
Put the version of *bHot-Link* that you are using without the period. Example BHL_Version = 61.

Activate_BSA

If you want to turn off the session that adds the Hot Links, set this variable to No.

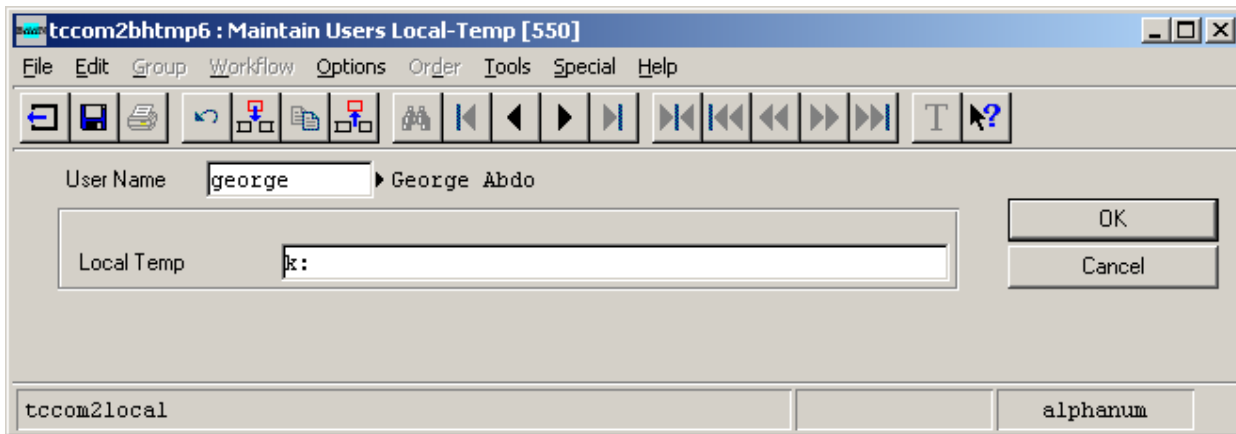
Maintain *bHot-Link* users permissions

Use the session tcom2bhurs7 to define permissions for each user:



- default : These are the permissions for all users.
- Use the < > buttons to move between the users.
- Use the << >> buttons to move between the sessions
- You need to check the “Remove users’ Permissions” if you would like to remove a specific user.
- In order to remove a specific session, you need to delete all users defined for this session.
- If you choose to give a user permission to replace/detach a file, he will not see the replace/detach menu

Define Local Temp Directory – tcom2bhtmp7



The *bHot-Link* temp directory is created in a directory based on session **tcom2bhtmp7**

The default is C: (defined in bhl.ini), and if you have users for which C: is not good (Citrix for example), use **tcom2bhtmp7** and define a specific location for the *bHot-Link* Local Directory for each one of them.

If most of your users use Citrix, change the default value in bhl.ini to be the directory on the meta-server where you wish to have the *bHot-Link* Local Directories created. For others, you must define them one-by-one.



Warning

In case you are not familiar with Unix/NT commands or with Baan tools, please contact your system administrator before you proceed with the installation. In case of any question, please contact us and we will arrange to have a technical support person assist you install bHot-Link.

By installing this demo version, you are licensing the software for the initial period of thirty (30) day evaluation period.

To receive a copy of the full Nazdaq license agreement, please contact info@nazdaq-it.com

Trade Marks

bHot-Link is a trade Mark of NAZDAQ Ltd.

All other referenced company and product names may be trademarks or registered trademarks of others.

NAZDAQ

For support, please send examples/ print screens to info@nazdaq-it.com

Our office Hours are Monday - Thursday 10:00 – 19:00 and Friday 10:00 – 17:00 GMT +2

Check our WEB site for other Baan Related Products

www.nazdaq-it.com

A, May 2010