

Baan Query Tool

This Baan/ERP Ln utility comes with an easy to use graphical interface that allows you to create dynamic queries from your Baan database.

Key Features:

Use Baan Data Dictionary: Browse Baan/ERP Ln tables and fields and creates a query - using the Baan/ERP Ln data dictionary - No need to remember table names like tiscf012550 and field names like qcmo and qbfd.

Quick Installation: Load few Baan/ERP Ln sessions and all Baan/ERP Ln users will have access to Baan Query Tool.

Easy to Configure: No ODBC or database drivers need to be configured; works directly with Bshell.

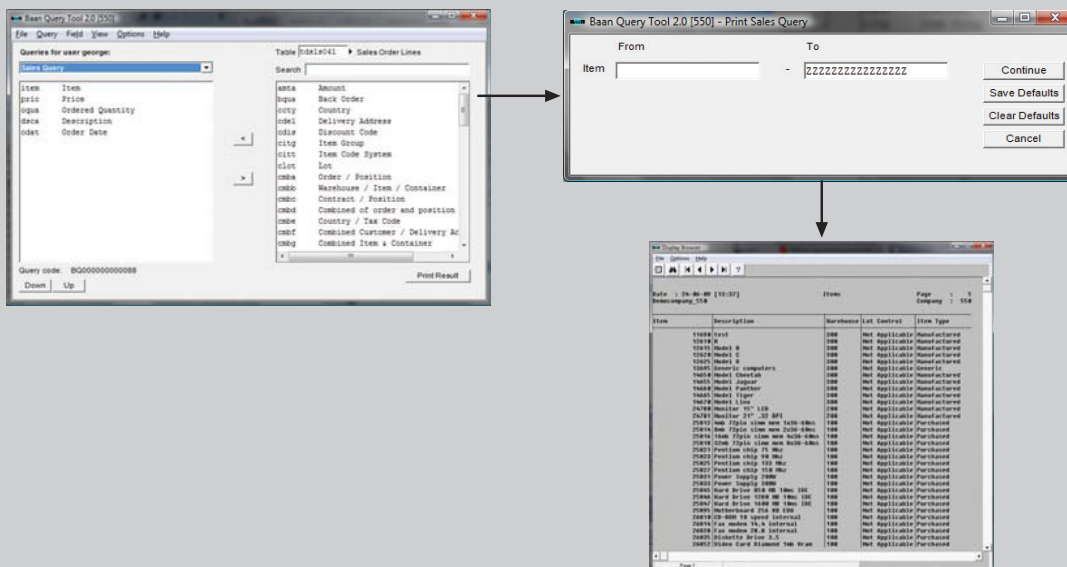
Fully integrated in Baan: Baan Query Tool is fully integrated in Baan/ERP Ln; reports run as native Baan/ERP Ln reports.

Handles Special Fields: Can work with Baan/ERP Ln special fields. For example, enumerated fields, arrays and text.

Manual or Automatic: Possibility to run queries in automatic mode, directly from the Baan menu (Like a native session is run)

Multi-User: In addition to users that can create queries, you can define run-only users that have a certain set of queries they can run.

Permissions: Developers and run-only users can be set so they have access to certain packages or tables.



NAZDAQ's add-on utilities for Baan have proved to be indispensable software tools at Grindmaster, used extensively by all of our departments for automating information flow to front office applications, empowering us to do more with less by letting us focus on our primary business tasks. While this has unquestionably enhanced our productivity and efficiency, I particularly cherish the fact that the fewer the paper you print as a consequence of using the NAZDAQ Baan 2 tools, the less trees you will be chopping down, which is great news for the planet!

Ravi Dhareshwar, IT Director, Grindmaster Corporation, Louisville, KY, USA