

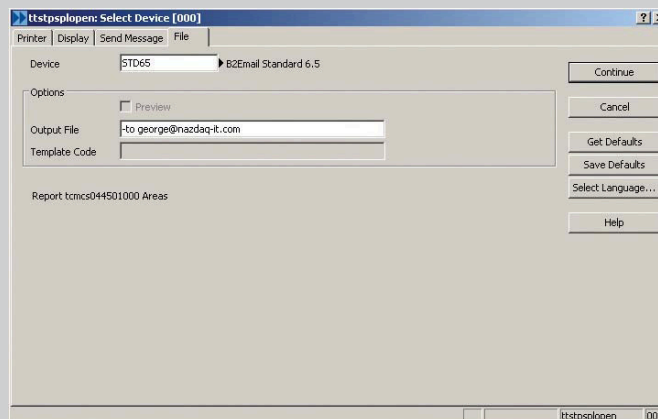
# B2Email Standard

Allows the user to archive, print or send Baan/ERP Ln Reports by e-mail to anyone at anytime, including nightly jobs - in PDF, RTF, CSV, XML, BPF, TXT, HTML or in the e-mail body.

*B2Email Standard* can be used to distribute important heavy duty reports at night. Several people will get a copy by e-mail (in the format they prefer); it will also be printed on few printers and saved on disk in few locations. It can also be used directly or indirectly using scripts for general e-mailing of reports, printing documents such as invoices or checks and simply to save a soft copy of a certain report in PDF format. B2Email Standard maintains a log of all e-mails sent, documented, printed, or archived. B2Email Standard works in three modes:

## 1. Manual

Once the report is sent to the B2Email output device, you must indicate the email address of the user that will be receiving the report. Once the report finishes processing, it will be sent to that user by email.



## 2. Automatic

Defines the recipients of each report and sends a message. Every time this report is run to the B2Email device, it is sent to the e-mail address defined by the broker. If a report is defined in the B2Email broker session, the B2Email device will pick the broker definitions to automatically e-mail, print or archive the output coming out of Baan. This is very useful for **nightly jobs** run in batch. It works in cron job as well.

## 3. From a Program Script

You can call the *B2Email Standard* device, from within your script, to create a PDF file (or any other format) from your output and e-mail it.

### Email Integration:

*Baan Mail-Merge* supports sending via SMTP, MS-Outlook/Lotus Notes API or via Unix Sendmail. The sending method is defined globally or per user.

In my decade of career in the field, your software has been very impressive to me in that it has been amongst the easiest to install, configure and use

Jenny Chang, Information Technology Department, Atlantic Packaging, Scarborough, ON, Canada