



B2WIN
B2EXCEL
B2WORD
B2EMAIL
B2FAX
B2PDF

B2Win 5.0

B2Win is the ultimate utility for downloading any Baan report directly into Excel, Word, PDF, XML, HTML and notepad. It is installed in hundreds of Baan servers in 40 countries around the world and is used daily by thousands of users to download Baan reports to office applications.

Reports can be converted in one of four modes: Table, As-Is, Graphic and User-Defined.

B2Excel

• B2Win includes an automatic report converter that has been designed to match any Baan report with a standard looking layout. This converter performs the following functions:

- Cleans reports from all unnecessary headers
- Takes care of leading zeros
- Takes care of date conversions and makes possible mm/dd/yyyy to dd/mm/yyyy conversions and vice versa
- Takes care of number conversions and allows dot-comma format to be converted to comma-dot format and vice versa
- Handles Baan Finance Reports that include the negative sign on the right

• For non-standard reports, a friendly graphical wizard allows you to build a conversion configuration file for smart conversion into Excel. The configuration is then saved and will be used any time this report is converted to Excel.

This Wizard enables you to:

- Handle floating headers - You can delete, keep or pivot any floating header.
- Delete columns, define a local data dictionary, define local data types, and split columns.
- Transpose reports and take line-by-line reports into Excel.



The B2Win software is excellent value for our money

Peter Fiebeg, Maschinenbau Kitz GmbH, Troisdorf, Germany

B2Word

- Automatically add a logo and/or footer for each document based on company number.
- Produce documents that include graphics defined in Baan.
- Automatically add a background image for documents based on report code.
- Produce documents in Portrait or Landscape in either A4, Letter or Legal size.
- Write your own Macro for a customized Word document.

B2PDF

- Produce documents in Portrait or Landscape in either A4, Letter or Legal size.
- Produce documents that include graphics defined in Baan. Reports will have the same look as BWPrint reports.
- Automatically add a logo and/or footer for each document based on company number.
- Automatically add a background image for documents based on report code.
- Write your own configuration for making a customized PDF file.

B2XML

- Make conversions based on the same mechanism that is used in B2Excel.
- Use the XSL format to make more user-friendly presentations.

B2HTML

- Convert reports as-is and browse in your Web browser.
- Convert reports as a table in HTML format.
- Use CSS files to make more user-friendly presentations.

B2Edit

- Enable ASCII downloads of reports without giving FTP access to users.
- Open the ready for Excel report in ASCII format and transfer it to a different application.

B2Win requires a single installation at a Baan server.

Automatic detection of application path at the client side.

Status Bar tells you how much longer you must wait for results.

Supports Windows 95 up through Windows XP in most major languages.

The server version of B2Win works for Baan IVc and higher. For Triton and Baan IVb customers and those who would like to try B2Win prior to installing it on their Baan server, we do offer a Stand Alone version which includes the same capabilities.

The finance users at Flowserve love the B2Win product, especially trying to reconcile ledger accounts. When you pull finalized transactions into Excel, you can really use Excel's power of doing sub-totals on transaction types, which enables you to analyze the data in an efficient way.

Manny Blits, Finance Consultant, Flowserve, Vernon, CA, USA

B2Email Plus 5.0

This application allows you to send reports or data from sessions by Email, Fax or SMS to pre-defined customers, suppliers, employees and other email addresses from a global address book.

B2Email Plus allows you to send reports or screens in the mail-body or as attachments in the following formats:

PDF – Our bpf2pdf utility allows you to make PDF files with graphics defined in Baan.

RTF – Is most suitable for Word.

CSV – For reading in MSExcel. Files are “cleaned” based on B2Win algorithms.

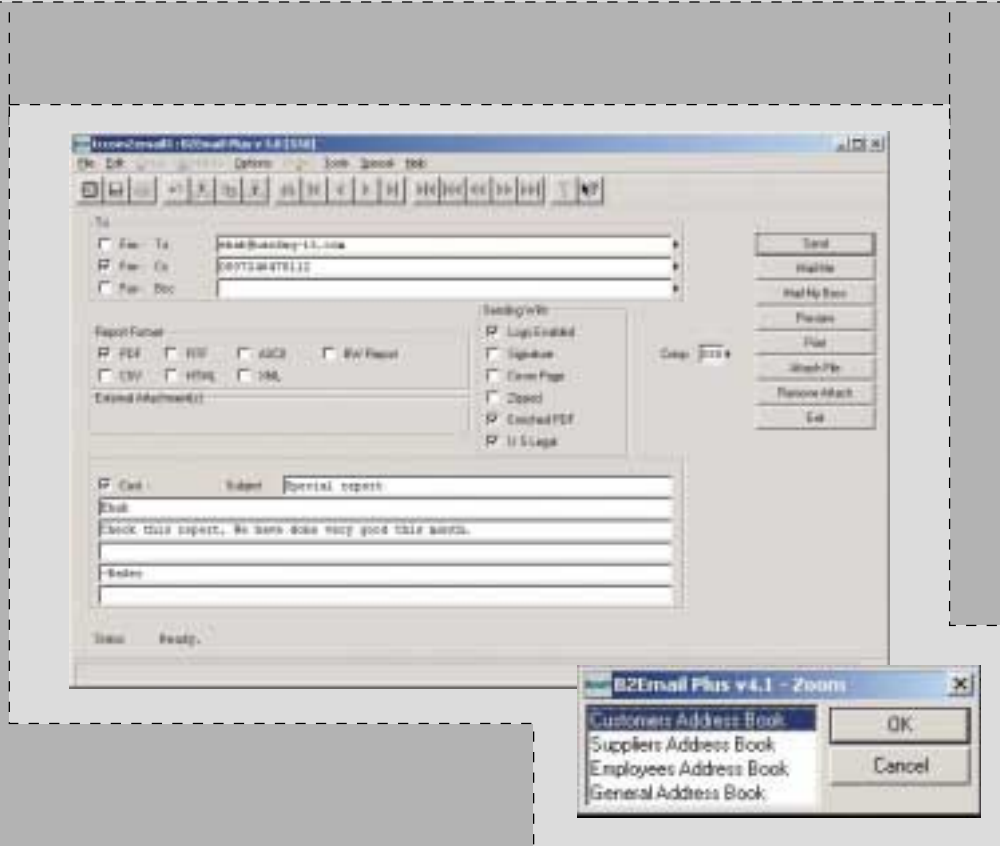
HTML – Ready for posting on the web

BWPrint – Baan’s native format

XML – Ready for B2B applications

Text – Ready for any use, including transferring to other applications.

Attachments can be zipped for secure and compact transmissions.



Product installation was a breeze, support is excellent, and our users love

Daniela Zaporjanu, IS Director, Technical Concepts, Mundelein, IL, USA

Features in B2Email Plus 5.0

- Email or fax any Baan report or all data from a specific Baan session.
- Add a company logo, footer and/or your own signature to output.
- Send output in Portrait and Landscape in A4, Letter, or US Legal size paper.
- Use up to 100 supplier or customer address books.
- Import the company's global address book into B2Email.
- Use employee email addresses.
- Utilize Mail-Me and Mail-My Boss buttons for easy emailing.
- Preview output before sending it.
- Browse your PC and add an external attachment to output produced from Baan.
- Write a customized message to go along with the email sent.

Technical Requirements:

Emailing

B2Email can use any email capability and fits different security settings:

- SMTP (with or without authentication)
- Unix sendmail
- MSOutlook Client or Lotus Notes Client (in wake-up or sleep modes)

Faxing

B2Email can be integrated with different fax applications:

Internet Faxing, RightFax, Fax Maker, Ferrari-Fax, Zeta-Fax, MRS-System and Windows 2003 Fax Server

SMS

B2Email can be integrated with different SMS ASP providers.

B2Email Plus requires a single installation at your Baan Server.

Supports Windows 95 up through Windows XP in most major languages.

Works for Baan IVb and higher.

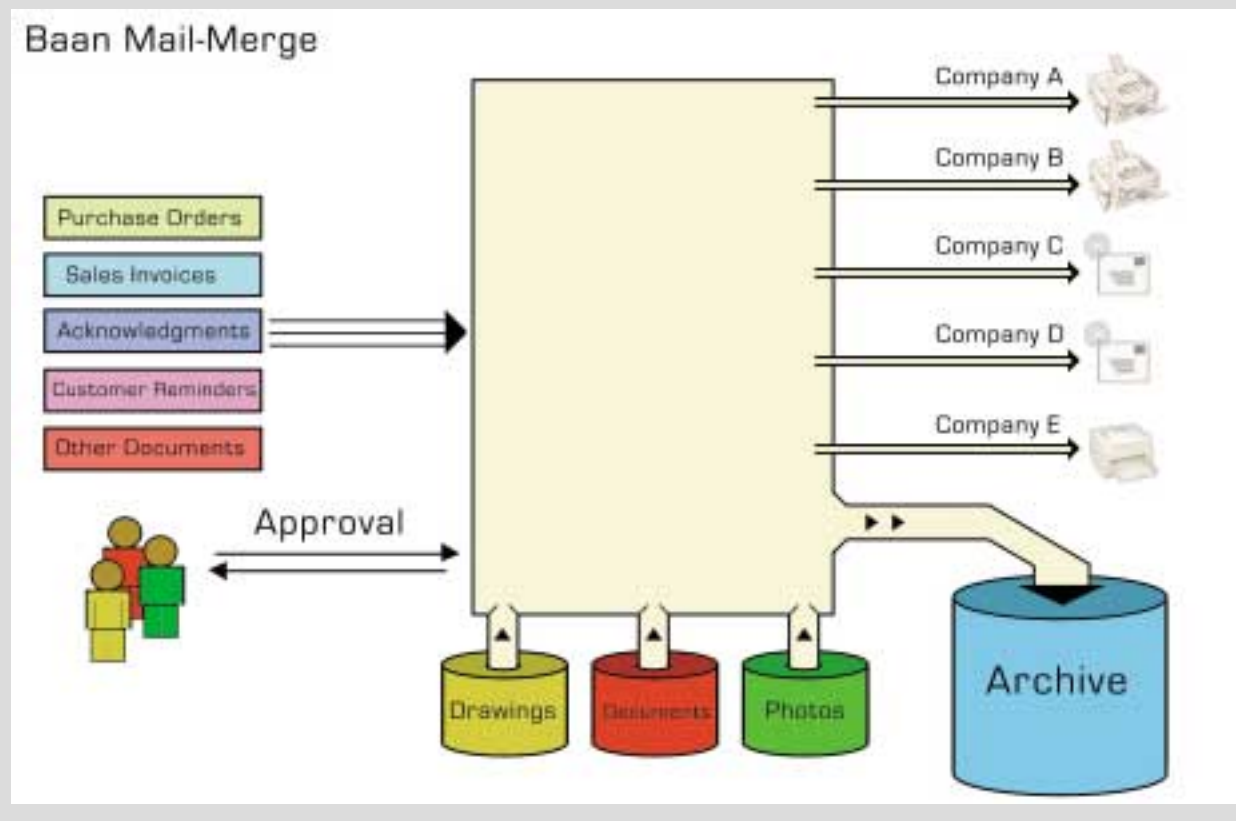
We have had requests and inquiries, over the last couple of years, for the capability to e-mail reports directly out of Baan. This year we found the B2Email product from NAZDAQ and it satisfied our needs. Installation was simple and product support was good. Our initial searches found products too costly but NAZDAQ fit into our budget. By automating the distribution of just one report, B2Email will pay for itself in less than a year.

Don Clark, I/S Support Center Manager, Lufkin, TX

Baan Mail-Merge 5.0

Baan Mail-Merge is an enterprise-wide, multi-user, e-commerce system that is tightly integrated with Baan and allows it to automatically Email, Fax, Print and archive documents. It produces dramatic savings by allowing companies to process business documents in a very fast and efficient way.

This powerful engine can handle any output coming from Baan, parse it based on a defined business partner, then deliver each document to the designated recipient in whatever method this business partner prefers to receive business documents, i.e. email, fax or print. This tool can also produce discrete hard copies of business documents for archiving purposes.



The Nazdaq team has done their utmost to help us with any of our questions or concerns.

Connie Knight - Baan Administrator, SPX Data Center, Philadelphia, PA, USA

Features in Baan Mail-Merge 5.0

Documents are emailed in PDF format with graphics, the company logo or footer, and a pre-printed form to produce professional looking documents.

A company-specific customized message accompanies the sent report. These smart letters will be sent in the language of the customer/supplier, based on Baan's document language.

Documents can be sent to more than one address book (i.e. to the customer and CC Sales Manager). One hundred supplier or customer address books are allowed.

A pre-defined logic allows automatic inclusion of multiple attachments with emails and faxes. For example, it is possible to automatically email or fax the purchase order together with drawings of all items within the purchase order.

When the output from business documents is sent to the Baan Mail-Merge device, it can be processed automatically without any intervention. For cases where data needs to be checked before sending, users can operate in One-by-One mode. Documents that need to be signed by more than one person can also be sent for approval prior to faxing or emailing.

Technical Requirements:

Emailing

Baan Mail-Merge can use any email capability and fits different security settings:

- SMTP (with or without authentication)
- Unix Sendmail
- MSOutlook Client or Lotus Notes Client (in wake-up or sleep modes)

Faxing

Baan Mail-Merge can be integrated with different fax applications, such as: Internet Faxing, RightFax, Fax Maker, Ferrari-Fax, Zeta-Fax, MRS-System and Windows 2003 Fax Server

Baan Mail-Merge works for Baan IVb and higher in Client-Server mode or Server Only mode.

Purchase Orders are received using an online system. They are entered into Baan as Sales Orders and then Sales Acknowledgments are emailed or faxed to customers using Baan Mail-Merge. We use Internet Faxing integrated with Baan Mail-Merge to fax our acknowledgments to customers and at the same time email copies to our sales representatives.

The Baan Mail-Merge system is also used for sending Sales Quotations and Purchase Orders.

Our users find Baan Mail-Merge to be fast, effective and easy to use. We also found Internet-Faxing to be an economical alternative to in-house fax servers. It is definitely faster when dealing with the volume of documents we have.

Barbara Bailey, Information Systems Manager, Jack Van Klaveren, St. Catharines ON, Canada.

B2Email Standard 5.0

B2Email Standard allows you to send Baan reports by email to anyone at anytime, including nightly jobs. Reports are sent as attachments in PDF, RTF, CSV, HTML, text, BWPrint or XML formats. Attachments can be zipped for secure and compact transmissions.

B2Email Standard can also help you create files from Baan reports in one of the above seven formats, without using a client-based application.

B2Email works in two modes:

1. Manual

Once the report is sent to the B2Email output device, you must indicate the email address of the user that will be receiving the report. Once the report finishes processing, it will be sent to that user by email.

2. Automatic

The B2Email broker defines who are the email addresses that will receive the sent report, and in what file format. Once the report is sent to the B2Email device in Automatic Mode, reports will automatically be emailed to the proper pre-defined recipients.



Technical Requirements:

Emailing: B2Email can use any email capability and fits different security settings:

- SMTP (with or without authentication)
- Unix sendmail
- MS-Outlook Client or Lotus Notes Client (in wake-up or sleep modes)

B2Email Standard is available in Client-Server mode or Server mode. Works for Baan IVb and higher.

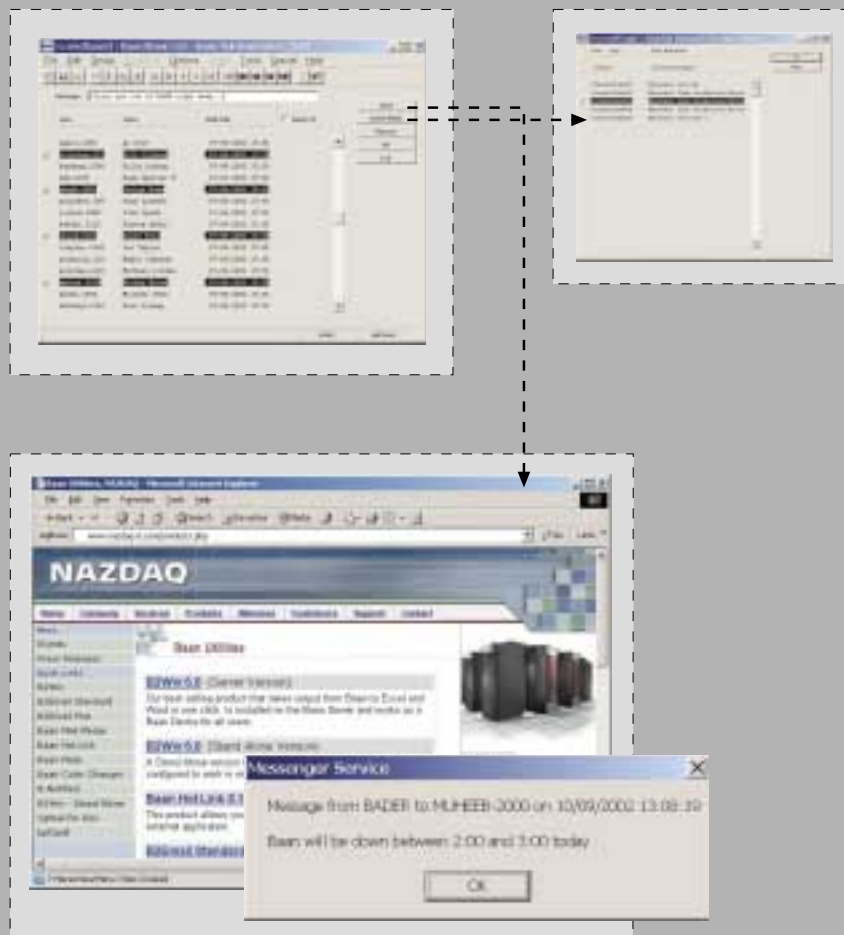
With using the B2Email product, we have now optimized our Baan Job scheduling function (currently jobdaemon and Unix Cron) to route the output into a format to the users and automatically group distribute via e-mail right to their mailboxes. This level of productivity has been just what our users and us were looking for.

Denis J. Donohoe, Business Systems Manager, Baker&Baker, IL, USA

Baan2Baan - The Baan Instant Messenger

Many times, the Baan system administrator wants to send a message to a specific user or to all users, asking to log off immediately, announce a scheduled downtime or any other system-related message.

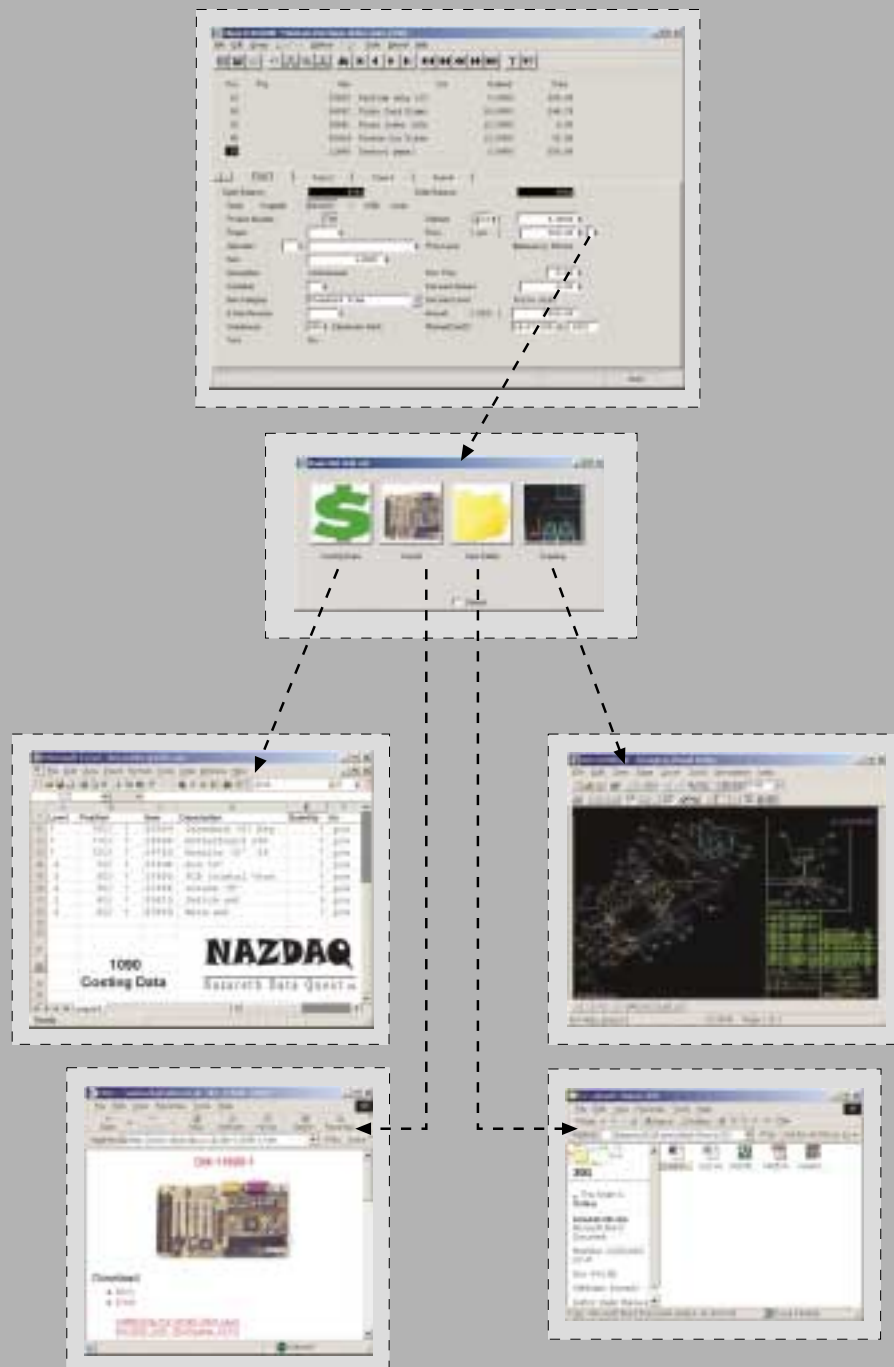
Many companies use the general email system, the phone system, or the paging system. Others have custom made solutions based on Unix or NT capabilities. Baan2Baan allows you to send messages to every user logged into Baan at the moment, the exact population you want to direct your messages to – Instead of announcing system messages to everybody.



Baan Hot Link 4.0

Baan Hot Link allows integration between any Baan session from the one side and any external application from the other.

For example, while maintaining an item in Maintain Item Data you can have a Hot Link to the item's AutoCAD drawing, MSWord specification, MSEXcel costing data and/or JPG photo, all in the click of a mouse.



Baan Hot Link does not require maintenance work in order to link each Baan entity and its related entities in other applications, which are usually file names. It automatically generates the file names based on a per-session mapping scheme, designed according to the company's naming convention.

Baan Hot Link supports names that are related to field names from the session's main table, global variables, and other strings.

For example, a certain company wishes to link drawings to items. The naming convention for these drawings is NAZDAQ-<Item Number>-<Item Group>.pdf. For item 11690 (Item Group 201), the associated file is NAZDAQ-11690-201.pdf.

The only maintenance work required if drawings already exist is to create an entry in the Baan Hot Link mapping session to reflect this naming. In the case that the link does not exist, users with permission can link new files, allowing management of documents from within Baan.

This link between the item and the item's drawing is also possible from other sessions where the item is a foreign key, like Purchase Order lines or Production Order lines, etc.

You can create a Baan Hot Link from a certain Baan screen with until twelve links. You can link Windows-based applications, web-based applications, folders, and stand-alone DOS applications.

The Baan Hot Link is added to the form of the Baan session, while not touching the Baan source code at all. It works for Baan IVc and higher.

Getting "other" data from within Baan is not easy, if not impossible.

This issue surfaced many times in the last few years, and there seemed to be no clear solution, until we discovered Baan Hotlink - which was the right answer at the right time.

Baan Hotlink from NAZDAQ delivers a simple, but powerful, capability into the hands of a Baan user to access data from outside Baan, and from the IT perspective it is an excellent choice.

We installed and tested it in an afternoon. It was immediately clear to me that Hotlink met three important criteria:

1. It is affordable.
2. It does exactly what it is supposed to do (Not everything I try can say that.)
3. It is easy to understand, implement, and use.

We also realized that the range of applications where Baan Hotlink can be applied is only limited by our imagination. We quickly found uses for Hotlink in Customer Order Entry, which is where we were looking for a solution, but discovered several more applications beyond the original one, like Purchasing, Warehousing and Others.

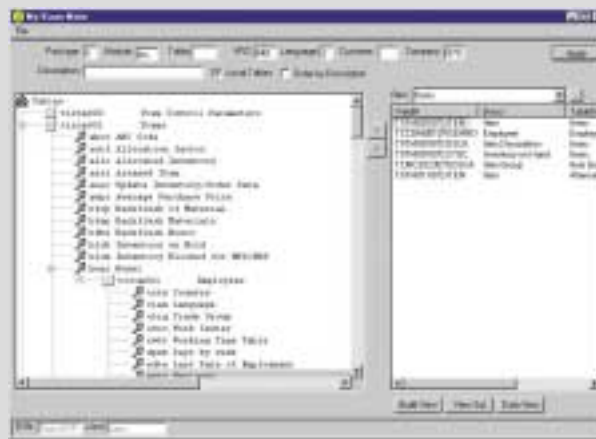
Clearly this is a tool we expect to use for a long time. Baan Hot Link is changing the way we use Baan at Conwed Plastics. We now have an avenue of information access for users we were not able (at least easily) to open before.

John Carroll, Manager of Information Technologies, Conwed Plastics, Minneapolis, USA

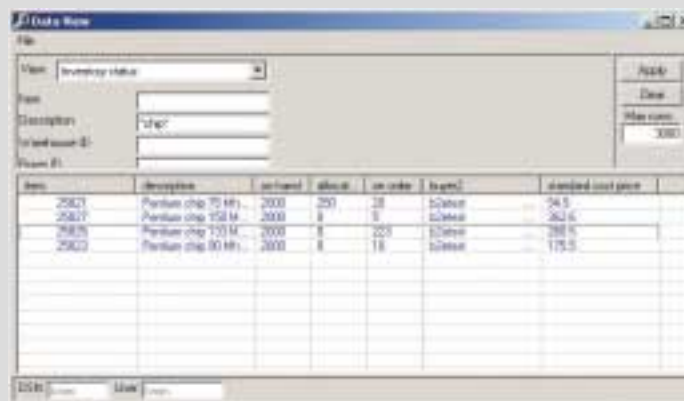
BaanMate 4.0

Allows you to extract data from the Baan database using dynamic queries that are built easily with a graphical user-interface.

- Browse Baan tables and fields and make links between tables.
- Use the Baan Data Dictionary. No need to remember table names like tisfc012550 and field names like qcmo and qbfd. The system also recognizes links between tables.



You can edit the generated SQL code and change it



- Change the order of a column
- Change the field description
- Change search order
- Filter data
- Use wildcards
- Sort by any column
- Export results in Excel, Word, PDF, XML or HTML
- Write your own macros to customize output

Connects to Baan through ODBC or QPTool. QPTool allows access to all databases including Baan's Tbase database.

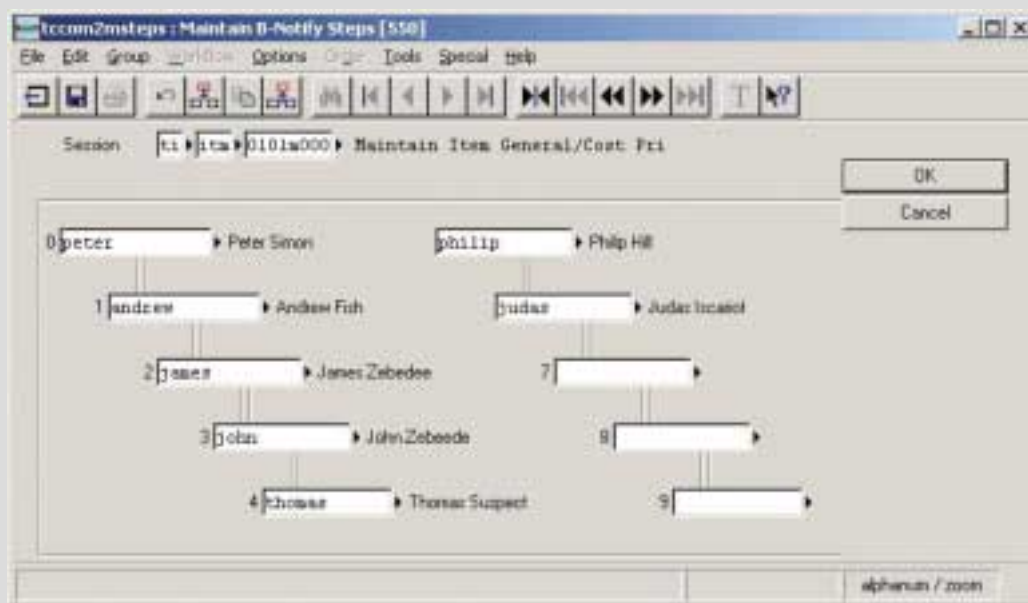
B-Notified

Business Processes require more than one person who work in different departments to update the same record. The work flow requires users to notify each other that they have completed the work and it is time for the next person.

B-Notified comes to solve this problem.

As an example, Maintaining Data for new Items goes through the following process.

- Peter Simon from Engineering moves an Item to Production
- Andrew Fish from Logistics updates Order Data
- James Zebedee from Logistics updates Inventory Data
- John Zebedee from Logistics updates Production Data
- Thomas Suspect from Purchasing needs to update Purchase Data
- Philip Hill from Sales updates Sales Data
- Judas Iscariot from Cost Accounting needs to Calculate Standard Cost Items

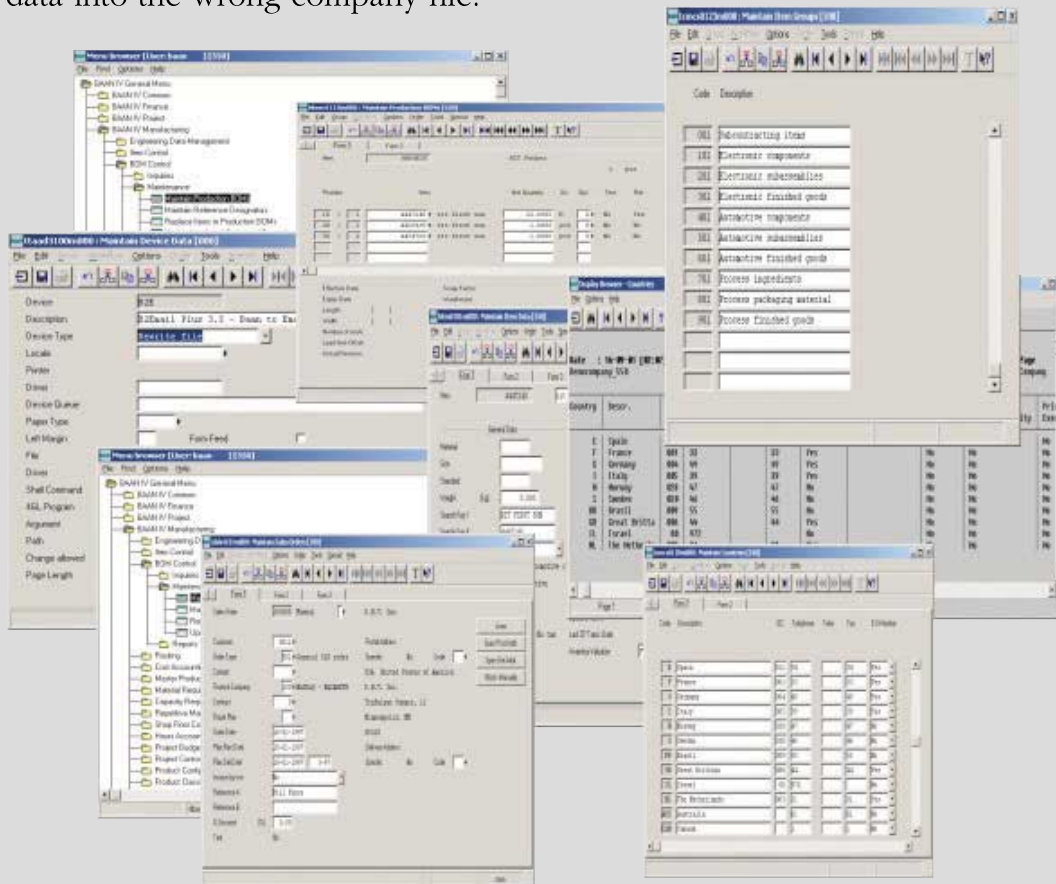


B-Notified provides an easy tool that will allow each user to notify the next in line to update a certain record. By pressing a button, an email with a link to this record is sent. Next person in line can just press on the link and will directly go into the record that needs updating.

This easy to use product can be linked to any Baan session and does not require touching the source code.

Baan Color Changer 4.0

Working with more than one company can be very confusing since you have to keep looking for the company number in the blue title bar. It can even be dangerous if you enter data into the wrong company file.

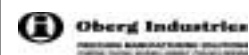


Baan Color Changer is the solution for you. Each Baan company number will have its own unique color.



- Companies that have the same company number but reside on different servers will have different colors.
- Different colors are assigned for companies with the same company number and the same server, yet have different BSE.
- Unlimited choice of colors.

Selected Customers



Since 1999, Nazareth Data Quest (NAZDAQ) has been delivering unique tools that enable Baan users to automate Business processes. These tools allow automatic emailing, faxing, printing and archiving of Baan documents and make it easy to take Baan reports into Excel, Word, PDF, XML and HTML.

NAZDAQ products include a tool for linking a Baan session and almost any other application. They also include a session-based workflow, a Baan Instant Messenger, a Baan Color Changer and a Baan Mate for easy retrieval of data from any Baan Database.

NAZDAQ has customers in 40 countries. These companies range from few Global Fortune-1000 companies to small sites with only few users.



Phone: +972-4-608-0023

Fax: +972-4-647-0112

Web site: www.nazdaq-it.com

Legal Notice:

Baan is a registered trademark of SSA Global Technologies, Inc. Excel and Word are registered trademarks of Microsoft Corporation. Adobe Acrobat Reader is a trademark of Adobe Systems Incorporated. Other brands or products are service marks, trademarks, or registered trademarks of their respective holders and should be treated as such.