



NAZARETH DATA QUEST

B2WIN
B2EXCEL
B2WORD
B2EMAIL
B2FAX
B2PDF

See inside an interview with an Infor ERP LN customer using NAZDAQ products

B2Win 5.8

B2Win is the ultimate utility for downloading any Baan/Infor ERP LN report directly into Excel, Word, PDF, XML, HTML and Notepad.

Reports can be converted in one of four modes to these applications: Table, as-is, graphic and user-defined.

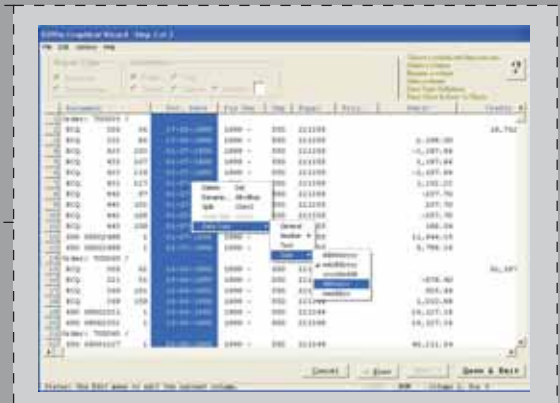
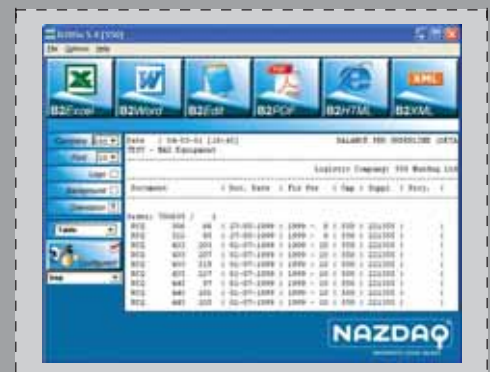
B2Excel

B2Win includes an automatic report converter that has been designed to match any Baan/Infor ERP LN report with a standard looking layout. This converter performs the following:

- Cleans the report from all unnecessary headers.
- Takes care of leading Zeros.
- Takes care of the date conversions and makes mm/dd/yyyy to dd/mm/yyyy conversions and vice versa.
- Takes care of number conversions and allows dot-comma format to be converted to comma-dot format and vice versa.
- Handles Baan finance reports that include the negative sign on the right. Possibility to show a dash when a certain cell contains the number zero. Very useful in finance reports.

For non-standard reports, a friendly graphical wizard allows you to build a configuration file for smart conversion into Excel. The configuration is then saved per report or per user and can be used any time the report is taken into Excel. With these configurations you can do the following:

- Handle floating headers – to delete, keep, or pivot any floating header.
- Delete columns, define a local data dictionary, define local data types and split columns.
- Transpose reports and take line-by-line reports into Excel.



B2Win is the most important tool in our company.

Michael Körsgen, Grotbe, Hennef, Germany

The B2Win software is excellent value for our money.

Peter Fiebeg, Maschinenbau Kitz GmbH, Troisdorf, Germany

B2Word

- Automatically add a logo and/or footer to a document based on company number. Possibility to define “virtual companies” with distinct logos.
- Produce documents that include graphics defined in Baan.
- Automatically add a background image for documents based on report code.
- Produce documents in Portrait or Landscape in A4, Letter or Legal size paper.
- Write your own Macro for a customized Word document.

B2PDF

- Produce documents in Portrait or Landscape in A4, Letter or Legal size paper.
- Produce documents that include graphics defined in Baan. Reports will have the same look as BWPrint reports.
- Automatically add a logo and a footer to a document based on company number. Possibility to define “virtual companies” with distinct logos.
- Automatically add a background image to a document based on report code.
- Write your own configuration for making a customized PDF file.

B2XML

- Make conversions based on the same mechanism that is used in B2Excel.
- Use the XSL format to make more user-friendly presentations.

B2HTML

- Convert reports as-is and browse in your Web browser.
- Convert reports as a table in HTML format.
- Use CSS files to make more user-friendly presentations.

B2Edit

- Enable ASCII downloads for reports without giving FTP access to users. Open the ready for Excel report in ASCII format and transfer it to a different application.

Technical Requirements:

Installation: B2Win is installed at the Baan server and can be used by all users. It does not require an installation on the client. Works on Windows 98 through Windows Vista with multiple languages.

Versions: The server version of B2Win works for BaanIVb and higher, on BW, WorkTop and WebTop. For Triton users and BA users with different versions, and for those who would like to try B2Win prior to installing it on their Baan server, we do offer a stand alone version which includes similar capabilities.

The finance users at Flowserve love the B2Win product, especially trying to reconcile ledger accounts. When you pull finalized transactions into Excel, you can really use Excel's power of doing sub-totals on transaction types, which enables you to analyze the data in an efficient way.

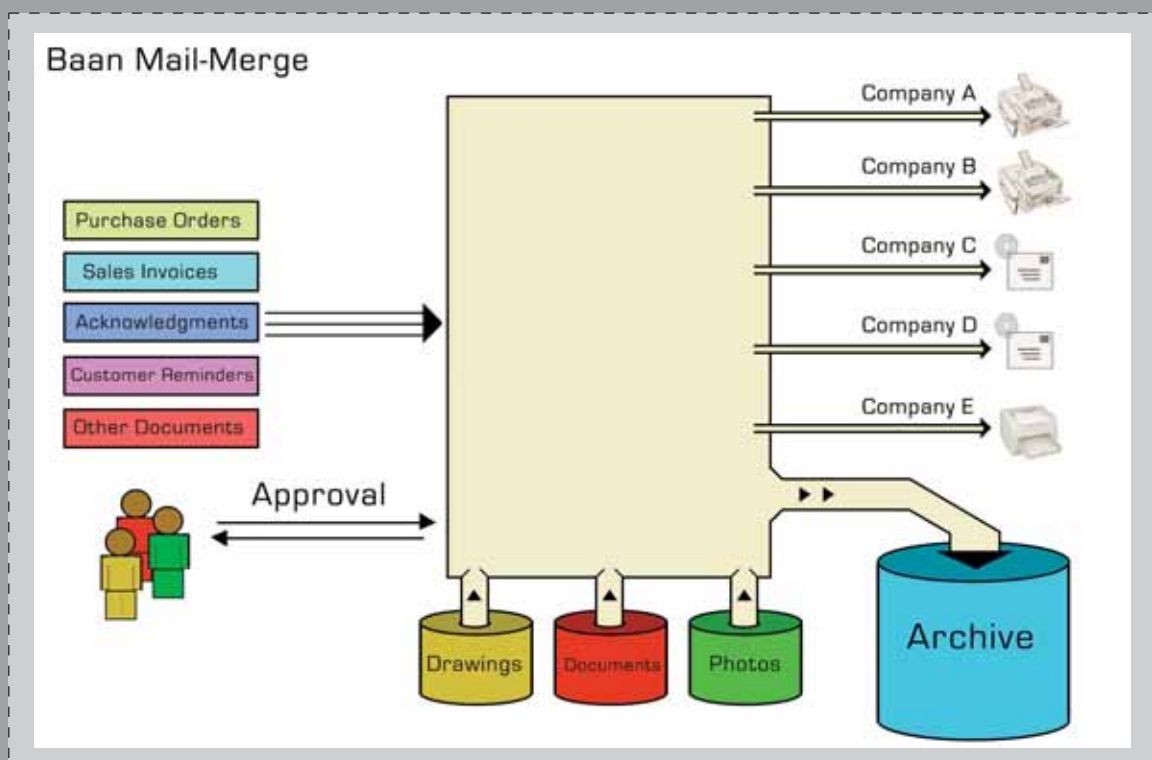
Manny Blits, Finance Consultant, Flowserve, Vernon, CA, USA

Baan Mail-Merge 6.2

For efficient E-mailing, Faxing, Printing and Archiving of Baan/ERP LN business documents

Baan Mail-Merge allows companies to automatically E-mail, fax, print and archive documents. This powerful engine can handle any output coming from Baan, parse it based on a defined business partner, and then deliver each document to the designated recipient in whatever method this business partner prefers to receive business documents, i.e. E-mail, fax or print. This tool can also produce discrete hard copies of business documents for archiving purposes.

As an example, if you have a Purchase Order run with few hundred Purchase Orders, the Baan Mail-Merge product will automatically recognize each document, match it with the corresponding supplier and its E-mail or fax, and will automatically send it. In parallel, all Purchase Orders will be archived on the network, with each order in its own PDF file. Printing orders can also be done based on the different rules for each document.



The Purchase Order Approval Module allows you to have multiple signatures on a Purchase Order based on authorization.

In my decade of career in the field, your software has been very impressive to me in that it has been amongst the easiest to install, configure and use.

Jenny Chang, Information Technology Department, Atlantic Packaging, Scarborough, ON, Canada

Features in Baan Mail-Merge 6.2

- Documents are E-mailed in PDF format with graphics, the company logo or footer, and a pre-printed form to produce professional looking documents. Possibility to make read-only or password protected secure PDF files.
- A company-specific customized message accompanies the sent report. These smart letters will be sent in the language of the customer/supplier, based on Baan's document language.
- Documents can be sent to more than one address book (i.e. TO the customer and CC the sales manager).
- One hundred address books are allowed for each supplier or customer in Baan IV. Uses Addresses in BaanERP and Infor ERP LN.
- A pre-defined logic allows automatic inclusion of multiple attachments with E-mails and faxes. For example, it is possible to automatically E-mail or fax the purchase order together with drawings of all items within the purchase order.
- When the output from business documents is sent to the Baan Mail-Merge device, it can be processed automatically without any intervention. For cases where data needs to be checked before sending, users can operate in One-by-One mode. Documents that need to be signed by more than one person can also be sent for approval prior to faxing or E-mailing.

Technical Requirements:

Installation: Is installed on the Baan server and can be used by all users. It does not require an installation on the client. Works on Windows 98 through Windows Vista with multiple languages.

E-mailing: Uses any of the following E-mail capabilities to send the documents out of your system: SMTP (with or without authentication), Unix Sendmail, Ms-Outlook Client or Lotus Notes Client (in a wake-up or sleep mode).

Faxing: B2Email integrates with different fax applications, such as Internet Faxing, RightFax, Fax Maker, Ferrari-Fax, Zeta-Fax, MRS-System and Windows 2003 Fax Server.

Versions: Baan Mail-Merge works for Baan IVb and higher on BW, WorkTop or WebTop in client-server mode or server-only mode. BA users (and cron jobs) are supported in server-only mode.

Purchase Orders are received using an online system. They are entered into Baan as Sales Orders and then Sales Acknowledgments are emailed or faxed to customers using Baan Mail-Merge. We use Internet Faxing integrated with Baan Mail-Merge to fax our acknowledgments to customers and at the same time email copies to our sales representatives.

The Baan Mail-Merge system is also used for sending Sales Quotations and Purchase Orders.

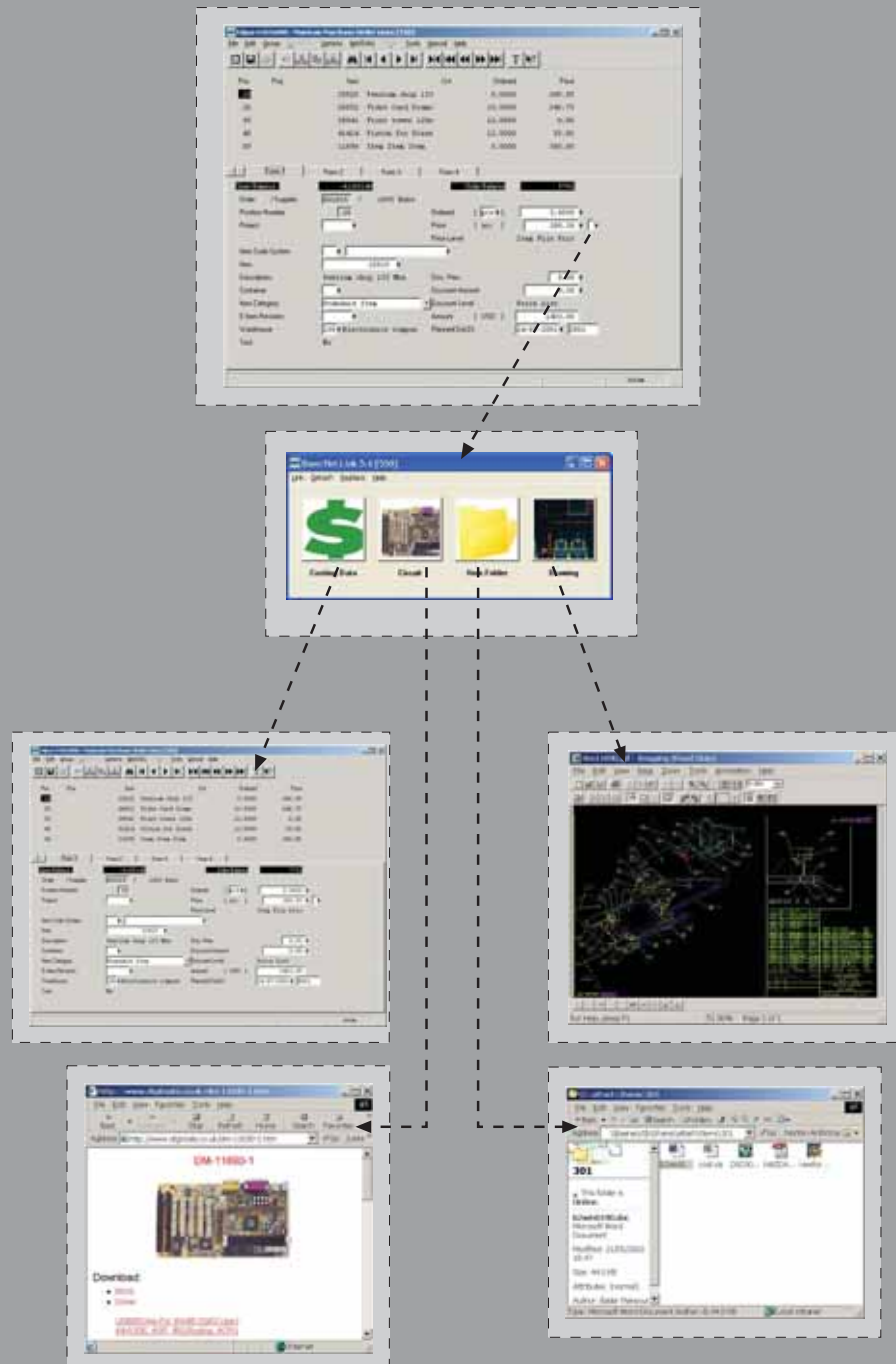
Our users find Baan Mail-Merge to be fast, effective and easy to use. We also found Internet-Faxing to be an economical alternative to in-house fax servers. It is definitely faster when dealing with the volume of documents we have.

Barbara Bailey, Information Systems Manager, Jack Van Klaveren, St. Catharines ON, Canada.

Baan Hot Link 5.6

Baan Hot Link allows integration between any Baan session from the one side and any external application from the other.

For example, while maintaining an item in Maintain Item Data you can have a Hot Link to the item's AutoCAD drawing, MSWord specification, MSeExcel costing data and/or JPG photo, all in the click of a mouse.



Baan Hot Link does not require maintenance work in order to link each Baan entity and its related entities in other applications, which are usually file names. It automatically generates the file names based on a per-session mapping scheme, designed according to the company's naming convention.

Baan Hot Link supports names that are related to field names from the session's main table, global variables, and other strings.

For example, a certain company wishes to link drawings to items. The naming convention for these drawings is NAZDAQ-<Item Number>-<Item Group>.pdf. For item 11690 (Item Group 201), the associated file is NAZDAQ-11690-201.pdf.

The only maintenance work required if drawings already exist is to create an entry in the Baan Hot Link mapping session to reflect this naming. In the case that the link does not exist, users with permission can link new files, allowing management of documents from within Baan.

This link between the item and the item's drawing is also possible from other sessions where the item is a foreign key, like Purchase Order lines or Production Order lines, etc.

You can create a Baan Hot Link from a certain Baan screen with until twelve links. You can link Windows-based applications, web-based applications, folders, and stand-alone DOS applications.

The Baan Hot Link is added to the form of the Baan session, while not touching the Baan source code at all. It works for Baan IVc and higher.

Getting "other" data from within Baan is not easy, if not impossible.

This issue surfaced many times in the last few years, and there seemed to be no clear solution, until we discovered Baan Hotlink - which was the right answer at the right time.

Baan Hotlink from NAZDAQ delivers a simple, but powerful, capability into the hands of a Baan user to access data from outside Baan, and from the IT perspective it is an excellent choice.

We installed and tested it in an afternoon. It was immediately clear to me that Hotlink met three important criteria:

1. It is affordable.
2. It does exactly what it is supposed to do (Not everything I try can say that.)
3. It is easy to understand, implement, and use.

We also realized that the range of applications where Baan Hotlink can be applied is only limited by our imagination. We quickly found uses for Hotlink in Customer Order Entry, which is where we were looking for a solution, but discovered several more applications beyond the original one, like Purchasing, Warehousing and Others.

Clearly this is a tool we expect to use for a long time. Baan Hot Link is changing the way we use Baan at Conwed Plastics. We now have an avenue of information access for users we were not able (at least easily) to open before.

John Carroll, Manager of Information Technologies, Conwed Plastics, Minneapolis, USA

W&H choose the **NAZDAQ**[®] solution to E-mail from Infor ERP LN

An interview with Josef Nobis, the Infor ERP LN project manager at W&H Dentalwerk in Austria

The Austrian company W&H Dentalwerk Bürmoos GmbH, with its head office in Bürmoos near Salzburg, is one of the leading suppliers of dental precision equipment globally. With over 800 employees throughout the world, W&H exports more than 95 % of its products to over 80 countries.

W&H implemented Infor ERP LN in May of 2007. The following is an interview we conducted with Mr. Josef Nobis, who lead the 11 month project to implement ERP LN.



The Infor ERP LN project team at W&H. Josef Nobis is first from the right

Q - How did you get to know the NAZDAQ tools?

A - After the installation of BaanIV in the year 1998 we looked for a tool to be able to send PDF business documents by email. We found a smart and nice tool in the B2Email suite: B2Email Standard, B2Email Plus and Baan Mail-Merge.

Q - What were your needs that were met in the Baan Mail-Merge product?

A - We generate Purchase Orders in a batch job and send them automatically to our suppliers by E-mail. This works very well with Mail-Merge.

Q - What was the alternative to Baan Mail-Merge solution? Why did you choose Baan Mail-Merge?

A - In our pure Windows environment we found no useful alternative. Mail Merge supplied exactly the function, which we needed.

Q - Do you have other uses for Baan Mail-Merge?

A - In addition to dispatching orders to the suppliers, we also E-mail production papers directly to the appropriate production team.

Q - You upgraded to Infor ERP LN lately. Can you tell us a bit about the project?

A - We needed a modern ERP software for our new enterprise processes and therefore we decided to install Infor ERP LN as a rollout to the whole W&H group. The project took 11 months and since 2nd May 2007 we are live in the production environment.

Q - Are NAZDAQ tools part of the LN installation? In what way?

A - As a part of the ERP LN Installation, we installed B2Email Standard, B2Email Plus and Baan Mail-Merge on the server, with no client installation necessary. These products are now working for our LN users in Webtop.

Q - Based on your experience through the years: how do you find the support given to you by NAZDAQ?

A - We now have several years of business contact with NAZDAQ and have thereby always had good experience with them. They were always flexible enough to solve our special requirements.

Q - Did you have any difficulty dealing with NAZDAQ?

A - Although the company is not located in our area and the NAZDAQ people never visited us, but the reaction speed was always satisfying and very high on our needs.

Q - What do you think about NAZDAQ solutions in relation to its pricing?

A - The NAZDAQ tools are reasonably priced and function problem-free once installed.

Q - What are the benefits of having an active maintenance contract with NAZDAQ?

A - Due to our service contract we can use the newest versions at any time and receive perfect support.



B2Email Plus 6.1

E-mail Baan reports using an Outlook looking interface

This application allows you to send reports or data from sessions by E-mail, Fax, or SMS to pre-defined customers, suppliers, employees and other E-mail addresses from a global address book.

B2Email Plus allows you to send reports or screens in the mail-body or as attachments in the following formats:

PDF – Our bpf2pdf utility allows you to make PDF files with graphics defined in Baan.

RTF – Is most suitable for Word.

CSV – For reading in Excel. Files are “cleaned” based on B2Win algorithms.

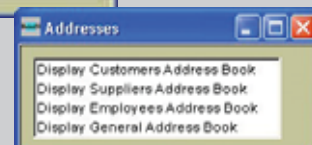
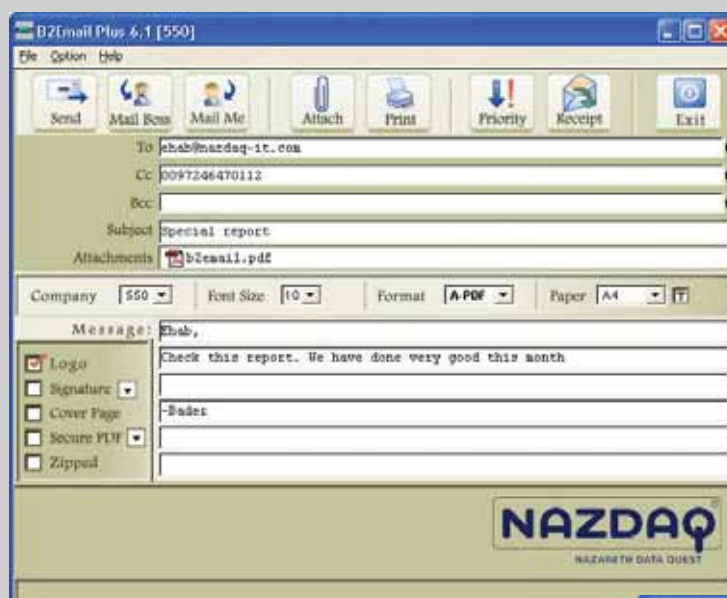
HTML – Ready for posting on the web.

BWPrint – Baan’s native format.

XML – Ready for B2B applications.

Text – Ready for any use, including transferring to other applications.

Attachments can be zipped for secure and compact transmissions.



Product installation was a breeze, support is excellent, and our users love it.

Daniela Zaporozjanu, IS Director, Technical Concepts, Mundelein, IL, USA

Features in B2Email Plus 6.1

- E-mail or fax any Baan report or all data from a specific Baan session.
- Add a company logo, footer and/or your own signature to output.
- Possibility to make read-only or password protected secure PDF files.
- Send output in Portrait and Landscape in A4, Letter, or US Legal size paper.
- Use up to 100 address books for each supplier or customer in Baan IV. Use Addresses in BaanERP and Infor ERP LN.
- Import the company's global address book into B2Email.
- Use employee E-mail addresses.
- Utilize *Mail-Me and Mail-My Boss* buttons for easy E-mailing.
- Preview output before sending it.
- Browse your PC and add an external attachment to output produced from Baan.
- Write a customized message to go along with the E-mail sent.
- The "B-Notified" Add-on allows users to send a notification E-mail that links a certain record in Baan, for the next user to update it.

Technical Requirements:

Installation: Is installed on the Baan server and can be used by all users. It does not require an installation on the client. Works on Windows 98 through Windows Vista with multiple languages.

E-mailing: Uses any of the following E-mail capabilities to send the documents out of your system: SMTP (with or without authentication), Unix Sendmail, Ms-Outlook Client or Lotus Notes Client (in a wake-up or sleep mode).

Faxing: B2Email integrates with different fax applications, such as Internet Faxing, RightFax, Fax Maker, Ferrari-Fax, Zeta-Fax, MRS-System and Windows 2003 Fax Server.

SMS: B2Email can be integrated with different SMS ASP providers.

Versions: Works for Baan IVb and higher on BW, WorkTop or WebTop in client-server mode or server-only mode. BA users are supported in server-only mode.

We have had requests and inquiries, over the last couple of years, for the capability to e-mail reports directly out of Baan. This year we found the B2Email product from NAZDAQ and it satisfied our needs. Installation was simple and product support was good. Our initial searches found products too costly but NAZDAQ fit into our budget. By automating the distribution of just one report, B2Email will pay for itself in less than a year.

Don Clark, I/S Support Center Manager, Lufkin, TX, USA

B2Email Standard 6.1

E-mail your Baan reports easily, in a job or from a script

B2Email Standard allows you to send Baan reports by E-mail to anyone (E-mail address or group) at anytime, including nightly jobs. Reports are sent as the body of the E-mail message, or as the attachment in PDF, RTF, CSV, HTML, text, BWPrint or XML formats. Attachments can be zipped for secure and compact transmissions.

B2Email Standard can also help you create files from Baan reports in one of the above seven formats, without using a client-based application. This can be integrated with other applications.

B2Email works in two modes:

1. Manual

Once the report is sent to the B2Email output device, you must indicate the E-mail address of the user that will be receiving the report. Once the report finishes processing, it will be sent to that user by E-mail.

2. Automatic

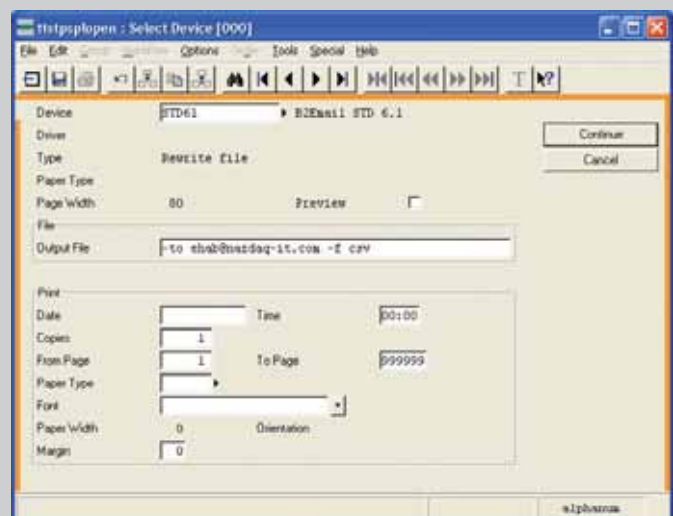
The B2Email broker defines which E-mail addresses to receive the report, and in what file format. Once the report is sent to the B2Email device in Automatic Mode, reports will automatically be E-mailed to the proper pre-defined recipients.

Technical Requirements:

Installation: Is installed on the Baan server and can be used by all users. It does not require an installation on the client. Works on Windows 98 through Windows Vista with multiple languages.

E-mailing: Uses any of the following E-mail capabilities to send the documents out of your system: SMTP (with or without authentication), Unix Sendmail, Ms-Outlook Client or Lotus Notes Client (in a wake-up or sleep mode).

Versions: Works for Baan IVb and higher on BW, WorkTop or WebTop in client-server mode or server-only mode. BA users are supported in server-only mode.

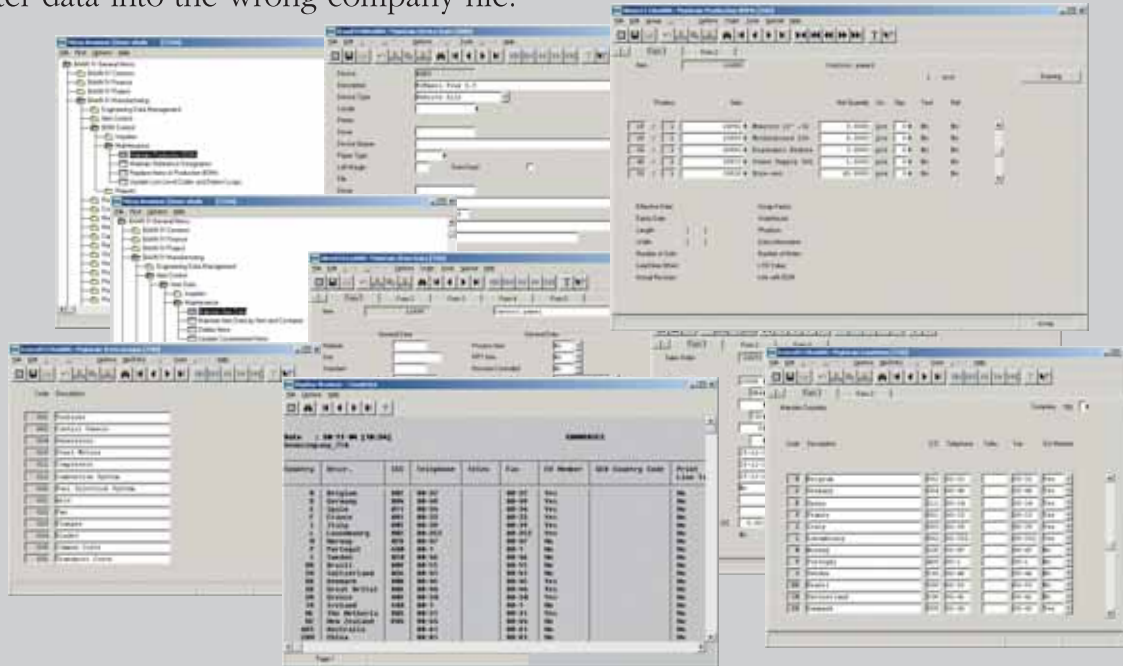


Their products are easy to install and safe to handle. We also like the ongoing development and the excellent customer service.

Christoph Kern, Baan Manager, MM Packaging, Europe GmbH, Austria

Baan Color Changer 5.1

Working with more than one company can be very confusing since you have to keep looking for the company number in the blue title bar. It can even be dangerous if you enter data into the wrong company file.



Baan Color Changer is the solution for you. Each Baan company number will have its own unique color.



- Companies that have the same company number but reside on different servers will have different colors.
- Different colors are assigned for companies with the same company number and the same server, yet have different BSE.
- There is unlimited choice of colors.
- It is activated at Windows Startup.

New – A server version of Baan Color is introduced with a single installation, activated at Baan startup. Colors part of the window.

I advocate all Baan shops to review and consider NAZDAQ's line of tools.

Anthony W. Calabrese, Gardner Denver Nash, Trumbull, CT, USA

Ms-Word and Ms-Excel include very powerful Visual Basic capabilities inside them. NAZDAQ has expertise in writing Visual Basic Macros that allow you to manipulate data in Excel and Word.



NAZDAQ
NASDAQ OMX DATA SOLUTIONS

Quote Number: _____

Client Number: _____

QUOTATION
FOR

Item	Description	Quantity	Unit Price	Net Amount

Payment Terms: : Balance net 30 days from date of service

Freight: : (Incurred, [] Incurred)

Lead time: :

Total system price does not include state tax.

Quotation valid for 30 days.

For additional information, please contact us:

Sales Rep: _____

CNR: _____

THANK YOU FOR YOUR BUSINESS

[illegible]

Joseba Iribar, IT Manager, Grupo Guascor, Zumaita, Gipuzkoa, Spain

Selected Customers

FLEXTRONICS

smart

E-ONE
Going Beyond the Call.



evenflo

Landini

DISA

RIT
connect & control

CDS
ALUMINIUM FOUNDRY

TC TECHNICAL CONCEPTS

MDA

MASCHINENBAU KITZ
mk

KISTLER

DURO INDUSTRIES
Division of Duro Textiles LLC

hamatech
steag

Buckman
LABORATORIES



W&H

CROWN

Oberg Industries
PRECISION MANUFACTURING SOLUTIONS
Precision • Custom • Service • Quality • On-Time Delivery

TARGUS
Making Your Mobile Life Easier®

Remploy

Brandt.ca

JVK
OUR BUSINESS IS GERMANY. YOUR BUSINESS.

GROENEVELD

PICO
COMAL
PICO

Baumer electric
Leading in precision sensing

nash_elmo

Since 1999, Nazareth Data Quest (NAZDAQ) has been delivering unique tools that enable Baan users to automate Business processes. These tools allow automatic emailing, faxing, printing and archiving of Baan documents and make it easy to take Baan reports into Excel, Word, PDF, XML and HTML.

NAZDAQ products include a tool for linking a Baan session and almost any other application. They also include a session-based workflow, a Baan Color Changer and a Baan Mate for easy retrieval of data from any Baan Database.

NAZDAQ has customers in 50 countries. These companies range from few Global Fortune-1000 companies to small sites with only few users.



Phone: +972-4-608-0023

Fax: +972-4-647-0112

Web site: www.nazdaq-it.com

Legal Notice:

Baan is a registered trademark of Infor Global Solutions. Excel and Word are registered trademarks of Microsoft Corporation. Adobe Acrobat Reader is a trademark of Adobe Systems Incorporated. Other brands or products are service marks, trademarks, or registered trademarks of their respective holders and should be treated as such.